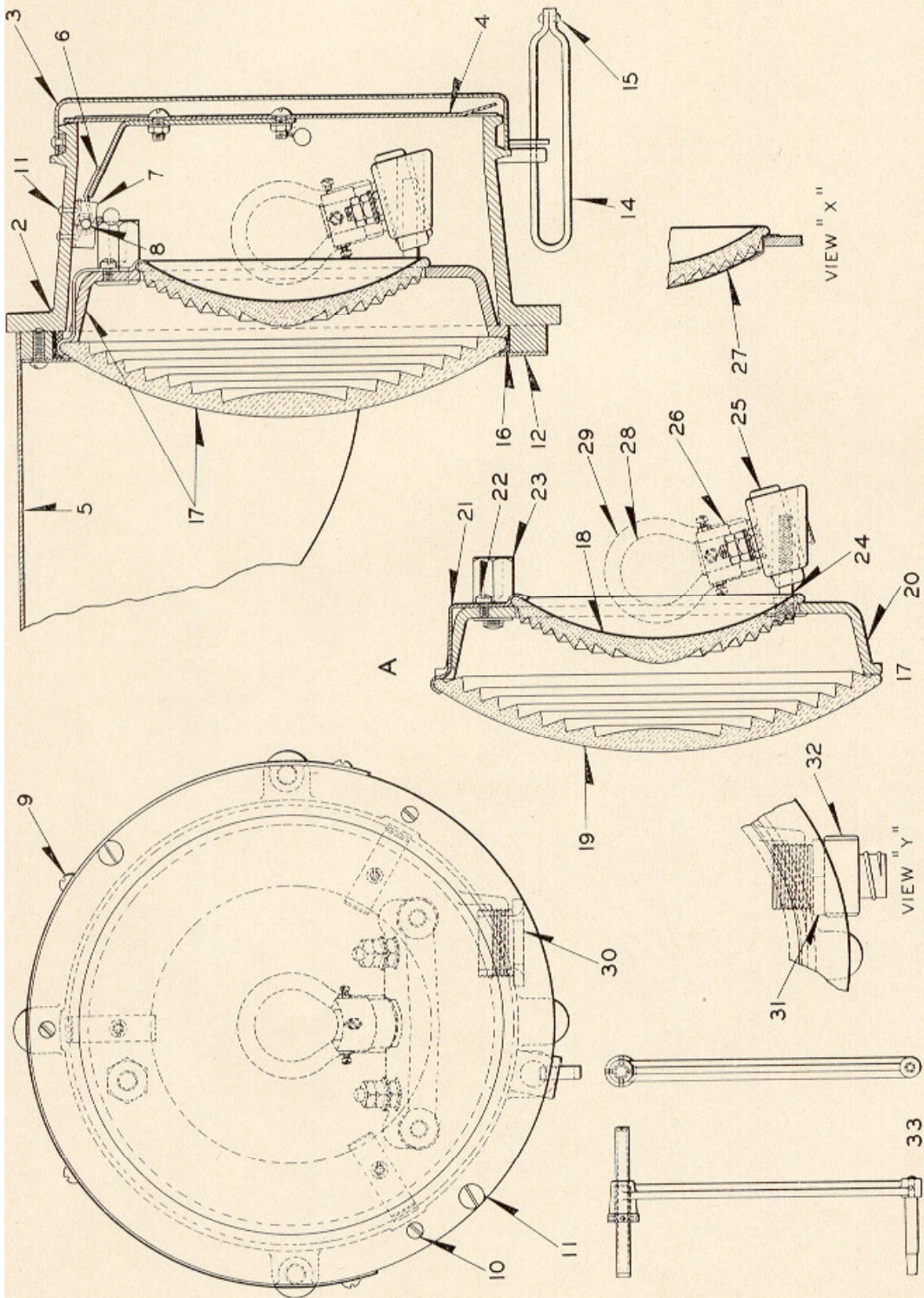


UNION SWITCH & SIGNAL CO.

MEMORANDA



STYLE "G" COLOR POSITION LIGHT SIGNALS  
DETAIL PARTS  
LAMP UNITS

ZCG UTILITY SCRAP  
UNION MO 63084

**UNION SWITCH & SIGNAL CO.**

**STYLE "G" COLOR POSITION LIGHT SIGNALS**

**DETAIL PARTS**

**LAMP UNITS**

**Order by Plate, Piece, Reference and Abbreviated Description Given in Heavy Face Type Only**

Style "G" Color Position Lamp Unit, complete (Without Lamp and Adapter)				
Piece	Ref.	Color of Inner Lens	Remarks	Dwg. Ref.
168591	A	Lunar White		C-9332-1
168592	Aa	Green		C-9332-1
168593	Ab	Yellow		C-9332-1
168594	Ac	Red		C-9332-1
168601	Ad	Lunar White	30° Spread	C-9332-1
168602	Ae	Green	30° Spread	C-9332-1
168603	Af	Yellow	30° Spread	C-9332-1
168604	Ag	Red	30° Spread	C-9332-1
168595	Ah	Clear	Sand Blasted	C-9332-1
169974	Aj	Clear	With Letter "S" View "X"	C-9332-1
170521	Ak	Clear	Sand Blasted, 30° Spread	C-9332-1
179604	Am	Yellow	Arranged per View "Y"	C-9332-1
179741	An	Red	Arranged per View "Y"	C-9332-1
Piece	Ref.	Description		Drawing Reference
167669	2	Case Only.....		C-9333-2
167619	3	Cover.....		C-9333-3
167709	4	Disc.....		C-9333-3
65898	5	Hood.....		C-8842-15

UNION SWITCH & SIGNAL CO.

STYLE "G" COLOR POSITION LIGHT SIGNALS

(Continued)

**ZCG UTILITY SCRAP  
UNION MO 63084**

DETAIL PARTS

LAMP UNITS

Order by Plate, Piece, Reference and Abbreviated Description Given in Heavy Face Type Only

Piece	Ref.	Description	Drawing Reference
167494	6	Spring .....	8124-241
167493	7	Clip .....	11893-542
167496	8	Pin .....	8097-420
	9	Machine Screw No. 10-30x $\frac{1}{4}$ " Rd. Hd. Br. for attaching Hood to Case.	
	10	Machine Screw No. 10-30x $\frac{3}{8}$ " Rd. Hd. Br. for attaching Lens Ring to Case.	
	11	Machine Screw No. 14-24x $\frac{3}{8}$ " Rd. Hd. Br. (Used to plug holes in lens housing when deflecting prism is not used.)	
71187	12	Lens Ring .....	7436-106
54937	13	Rivet .....	10301-50
169432	14	Clip .....	11893-566
54921	15	Rivet for Clip Ref. 14 .....	10301-1
131706	16	Gasket .....	8078-1367

**UNION SWITCH & SIGNAL CO.**

**STYLE "G" COLOR POSITION LIGHT SIGNALS**

(Continued)

**DETAIL PARTS**

**LAMP UNITS**

Order by Plate, Piece, Reference and Abbreviated Description Given in Heavy Face Type Only

Lens Unit, complete (Without Lamp and Adapter)				
Piece	Ref.	Color of Inner Lens	Remarks	Dwg. Ref.
168586	17	Lunar White		C-9333-4
168587	17a	Green		C-9333-4
168588	17b	Yellow		C-9333-4
168589	17c	Red		C-9333-4
168590	17d	Clear	Sand Blasted	C-9333-4
168596	17e	Red	30° Spread	C-9333-4
168597	17f	Lunar White	30° Spread	C-9333-4
168598	17g	Yellow	30° Spread	C-9333-4
168599	17h	Green	30° Spread	C-9333-4
169973	17j	Clear	With Letter "S"	C-9333-4
170520	17k	Clear	Sand Blasted, 30° Spread	C-9333-4
Piece	Ref.	Description		Drawing Reference
133171	18	5½" Lunar White Lens . . . . .		B-8276-23
71331	18a	5½" Green Lens . . . . .		B-8276-23
68162	18b	5½" Yellow Lens . . . . .		B-8276-23
71329	18c	5½" Red Lens . . . . .		B-8276-23
135763	18d	5½" Clear Lens (Sand Blasted) . . . . .		B-8276-23
151953	18e	5½" Clear Lens (With Letter "S") . . . . .		B-8276-43

## UNION SWITCH &amp; SIGNAL CO.

## STYLE "G" COLOR POSITION LIGHT SIGNALS

(Continued)

## DETAIL PARTS

## LAMP UNITS

**ZCG UTILITY SCRAP  
UNION MO 63084**Order by Plate, Piece, Reference and Abbreviated Description Given in  
Heavy Face Type Only

Piece	Ref.	Description	Drawing Reference
71186	19	8 $\frac{3}{8}$ " Clear Front Lens .....	B-8276-22
135757	19a	8 $\frac{3}{8}$ " Clear Front Lens (30° Spread) .....	B-8276-34
167670	20	Lens Housing.....	C-9333-1
167557	21	Clip.....	8735-714
	22	Machine Screw No. 10-30x $\frac{1}{4}$ " Fil. Hd. S. (Cad. Pl.)	
149681	23	Telescope Stud.....	8114-678
116518	24	Stud for attaching Lamp Base to Housing.....	8114-594
123630	25	Lamp Base, complete for "PS-16" Lamp Ref. 29.....	12415-6
150085	26	Adjustable Adapter (See Plate B-2975).....	12415-14
146283	26a	Fixed Adapter (See Plate B-2975).....	12415-10
78526	27	Screen (Used with Clear Lens only).....	C-8901-3
135722	28	Lamp, $\frac{1}{8}$ " Precision S-11 Type Single Contact, 13.5 Volts, 17-Watts (Pins in base 90° from plane of filament) (For use with Adapter Ref. 26 or 26a)...	B-12409-18
	29	Lamp (When Adapter Ref. 26 or 26a is not used) (See Plate B-3090) Rebased PS-16 Bulb.....	B-12409-
	30	1" Galv. Chase Nipple.	
	31	Pipe Reducing Bushing, 1" to $\frac{3}{4}$ " M. I. Galv.	
	32	Straight Box Connector, $\frac{3}{4}$ " M. I. Galv.	
167700	33	Sighting Tube Complete (Adaptable for all Units. One needed in each territory).....	C-9003-7