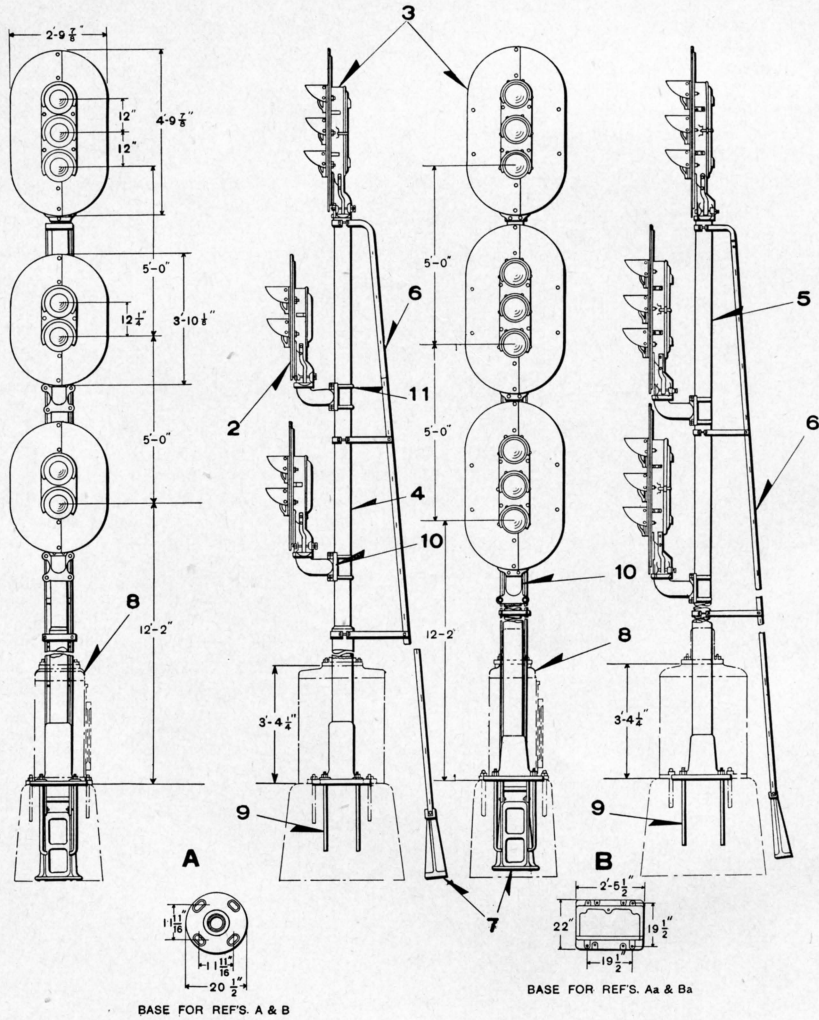


UNION SWITCH & SIGNAL CO.



3-UNIT, TWO AND THREE COLOR STYLE "P-2" LIGHT GROUND SIGNALS

UNION SWITCH & SIGNAL CO.

3-UNIT, TWO AND THREE COLOR STYLE "P-2" LIGHT GROUND SIGNALS

For Signal Units refer to Plates B-2735, B-2740 and B-2745. Unless otherwise specified, all Signals will be furnished having dimensions as shown, Two Color Units with Red Bottom and Green Top Lenses. Three-Color Units with Red Bottom, Yellow Middle and Green Top Lenses and with 10-Volt, 18-Watt double filament Lamps.

Backlight can be furnished on bottom light of all Three-Color Signals and Two-Color Signals without Individual Transformers, but is not included unless mentioned in order. Signal Units can be furnished with individual Transformers for alternating current, if desired, orders should so state, specifying voltage and frequency.

Order by Plate, Piece, Reference and Abbreviated Description Given in Heavy Face Type Only.

3-Unit, Two and Three-Color Style "P-2" Light Ground Signal					
Piece	Ref.	Unit Ref. Pl. B-2735	Size of Post	Remarks	Drawing Reference
A	A & B	A & B	5" & 6" Pipe	D.C. or A.C. without Individual Transformers	B-10325
Aa	Aa & Ba	Aa & Ba	5" & 6" Pipe	A.C. with Individual Transformers (Orders should specify voltage and frequency)	B-10325
Ab	A & B	A & B	5" Casing	With Instrument Case Ref. 8, D.C. or A.C. without Individual Transformers	B-10325
Ac	Aa & Ba	Aa & Ba	5" Casing	With Instrument Case Ref. 8, A.C. with Individual Transformers (Orders should specify voltage and frequency)	B-10325
B	B	B	5" & 6" Pipe	D.C. or A.C. without Individual Transformers	B-10325
Ba	Ba	Ba	5" & 6" Pipe	A.C. with Individual Transformers (Orders should specify voltage and frequency)	B-10325
Bb	B	B	5" Casing	With Instrument Case Ref. 8, D.C. or A.C. without Individual Transformers	B-10325
Bc	Ba	Ba	5" Casing	With Instrument Case Ref. 8, A.C. with Individual Transformers (Orders should specify voltage and frequency)	B-10325

UNION SWITCH & SIGNAL CO.

3-UNIT, TWO AND THREE COLOR STYLE "P-2" LIGHT GROUND SIGNALS

(Continued)

Order by Plate, Piece, Reference and Abbreviated Description Given in Heavy Face Type Only.

Piece	Ref.	Description	Drawing Reference
	2	Two Color Style "P-2" Signal Unit (D.C. or A.C. without Individual Transformers) With Top Lens Green and Bottom Lens Red (for details refer to Plate B-2735).....	B-10325-180
	3	Three Color Style "P-2" Signal Unit (D.C. or A.C. without Individual Transformers) with Top Lens Green, Middle Lens Yellow and Bottom Lens Red (For details refer to Plate B-2735).....	B-10325-110
157434	4	Post, 5" and 6" Pipe, 21' 1" long with Base and Holes drilled for wires for Refs. A, Aa, B and Ba.....	B-9893-178
	5	Post, 5" Casing, 17' 8 ³ / ₄ " long with Base and Holes drilled for wires for Refs. Ab, Ac, Bb and Bc.....	B-9893
	6	Ladder, 21' 4" long complete with Stays, for Refs. A, Aa, Ab, Ac, B, Ba, Bb and Bc.....	B-10313
62563	7	Ladder Foundation Pier with two 1/2"x1 1/4" Sq. Hd. Bolts and Hex. Nuts.....	B-8848-10
68687	8	Instrument Case (If any other case or lining is desired reference should be made to Plate L-1135).....	C-7589-6
10276	9	Foundation Bolt, 1"x3' 0" with Hex. Nut and Plate Washer.....	7913-54
142039	10	Bracket for mounting Style "P-2" Color Light Signals to 4", 5" or 6" Pipe.....	C-8034-18
54865	11	"U" Bolt, 3/4" with Hex. Nuts for attaching Ref. 10 to 4" Pipe.....	8782-102
43931	11a	"U" Bolt, 3/4" with Hex. Nuts for attaching Ref. 10 to 5" Pipe or Casing.....	8782-66
44199	11b	"U" Bolt, 3/4" with Hex. Nuts for attaching Ref. 10 to 6" Pipe.....	8782-69