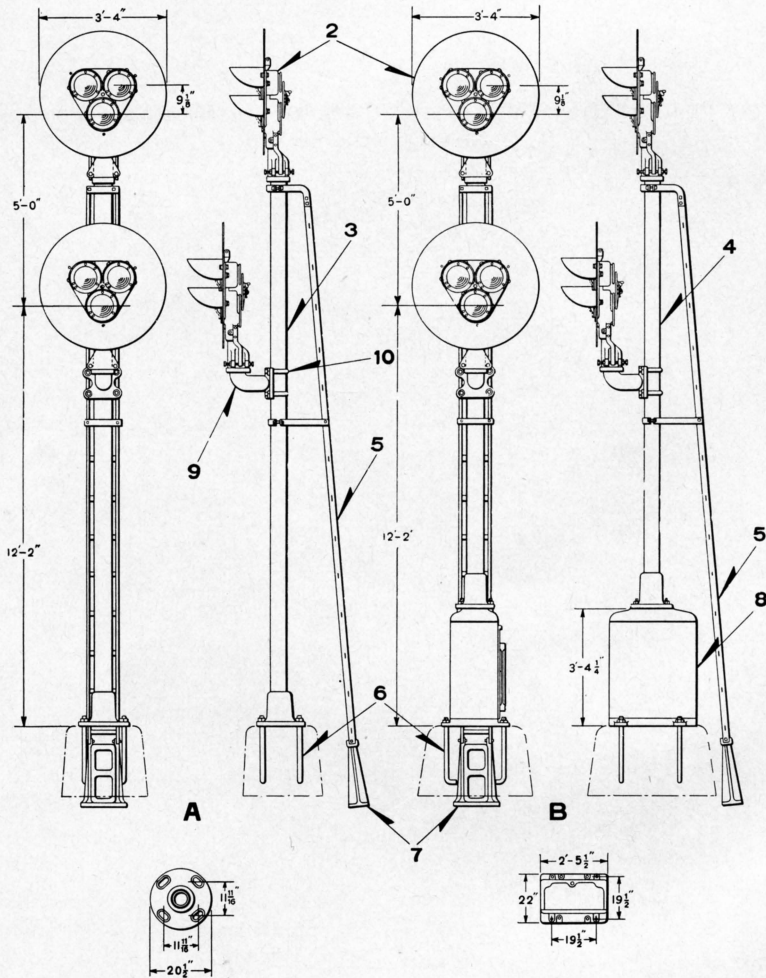


UNION SWITCH & SIGNAL CO.



2-UNIT, THREE-COLOR STYLE "TP-2" LIGHT GROUND SIGNALS

UNION SWITCH & SIGNAL CO.

2-UNIT, THREE-COLOR STYLE "TP-2" LIGHT GROUND SIGNALS

For Signal Units refer to Plates B-2735 and B-2780. Unless otherwise specified all Signals will be furnished having dimensions as shown, Unit with Red Bottom; Yellow Right Hand Top and Green Left Hand Top Lenses; with 10-Volt, 18-Watt double filament Lamps.

Backlight can be furnished on bottom light of all Signals but is not included unless mentioned in order.

Order by Plate, Piece, Reference and Abbreviated Description Given in Heavy Face Type Only.

2-Unit, Three-Color Style "TP-2" Light Ground Signal (D.C. or A.C. without Individual Transformers)					
Piece	Ref.	Unit Ref. Pl. B-2735	Size of Post	Remarks	Drawing Reference
	A	C	5" Casing		B-10325
	B	C	5" Casing	With Instrument Case Ref. 8	B-10325

Piece	Ref.	Description	Drawing Reference
	2	Three-Color Style "TP-2" Signal Unit (D.C. or A.C. without Individual Transformers) with Green L. H. Top; Yellow R. H. Top and Red Bottom Lenses (for details refer to Plate B-2735).....	B-10325-135
	3	Post, 5" Casing 15' 10 1/2" long with Base and Hole drilled for Wires, for Ref. A.....	B-9893
	4	Post, 5" Casing 12' 6 1/4" long with Base and Hole drilled for Wires, for Ref. B.....	B-9893
	5	Ladder, 15' 11" long complete with Stay for Refs. A and B.....	B-10313-434
10276	6	Foundation Bolt, 1"x3' 0" with Hex. Nut and Plate Washer.....	7913-54
62563	7	Ladder Foundation Pier with two 1/2"x1 1/4" Sq. Hd. Bolts and Hex. Nuts.....	B-8848-10
68687	8	Instrument Case (If any other case or lining is desired reference should be made to Plate L-1135)...	C-7589-6
142039	9	Bracket for mounting Style "TP-2" Color Light Signals to 4", 5" or 6" Pipe.....	C-8034-18

UNION SWITCH & SIGNAL CO.

2-UNIT, THREE-COLOR STYLE "TP-2" LIGHT GROUND SIGNALS

(Continued)

Order by Plate, Piece, Reference and Abbreviated Description Given in Heavy Face Type Only.

Piece	Ref.	Description	Drawing Reference
54865	10	"U" Bolt, 3/4" with Hex. Nuts for attaching Ref. 9 to 4" Pipe.....	8782-102
43931	10a	"U" Bolt, 3/4" with Hex. Nuts for attaching Ref. 9 to 5" Pipe or Casing.....	8782-66
44199	10b	"U" Bolt, 3/4" with Hex. Nuts for attaching Ref. 9 to 6" Pipe.....	8782-69