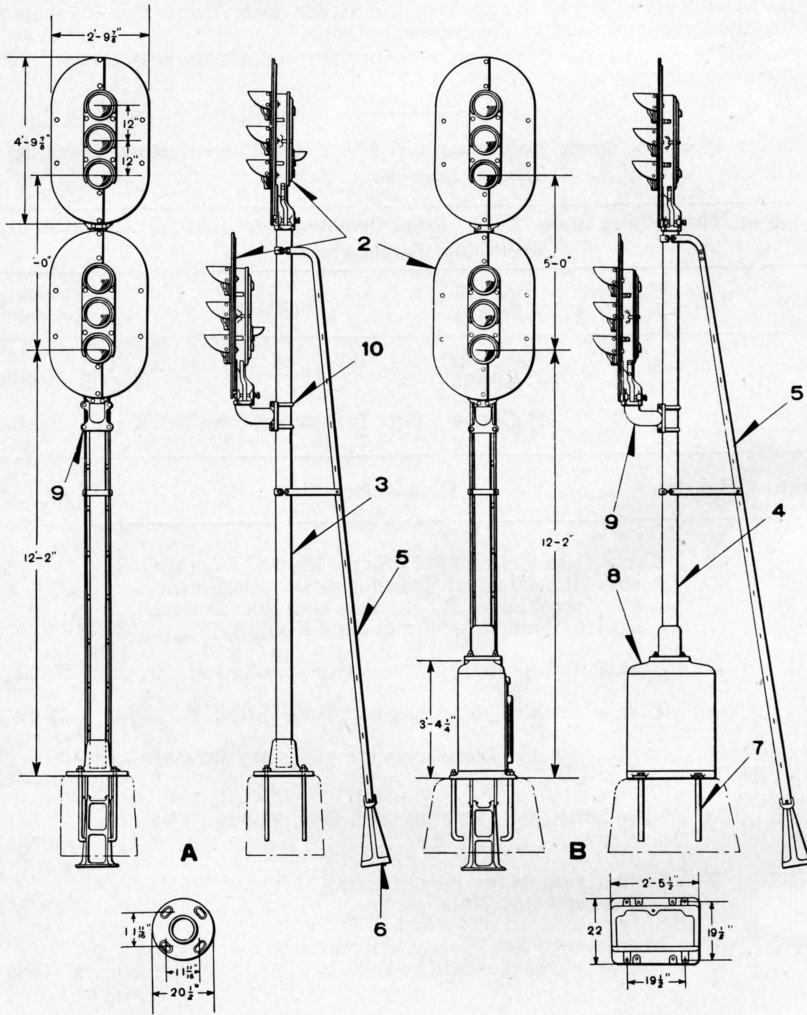


UNION SWITCH & SIGNAL CO.



2-UNIT, THREE-COLOR STYLE "P-2" LIGHT GROUND SIGNALS

UNION SWITCH & SIGNAL CO.

2-UNIT, THREE-COLOR STYLE "P-2" LIGHT GROUND SIGNALS

For Signal Units refer to Plates B-2735 and B-2745. Unless otherwise specified, all Signals will be furnished having dimensions as shown, unit with Red Bottom, Yellow Middle and Green Top Lenses and with 10-volt, 18-watt double filament Lamps.

Backlight can be furnished on bottom light of all Signals but is not included unless mentioned in order. Signal Units can be furnished with individual Transformers for alternating current, if desired, orders should so state, specifying voltage and frequency.

Order by Plate, Piece, Reference and Abbreviated Description Given in Heavy Face Type Only.

2-Unit, Three-Color Style "P-2" Light Ground Signal					
Piece	Ref.	Unit Ref. Pl. B-2735	Size of Post	Remarks	Drawing Reference
	A	B	5" Casing	D.C. or A.C. without Individual Transformers	B-10325
	Aa	Ba	5" Casing	A.C. with Individual Transformers (Orders should specify voltage and frequency)	B-10325
	B	B	5" Casing	With Instrument Case Ref. 8 D.C. or A.C. without Individual Transformers	B-10325
	Ba	Ba	5" Casing	With Instrument Case Ref. 8 A.C. with Individual Transformers (Orders should specify voltage and frequency)	B-10325
Piece	Ref.	Description			Drawing Reference
	2	Three-Color Style "P-2" Signal Unit (D.C. or A.C. without Individual Transformers) with Top Lens Green, Middle Lens Yellow and Bottom Lens Red (For details refer to Plate B-2735).....			B-10325-110
	3	Post, 5" Casing, 16' 2 1/2" long with Base and Hole drilled for wires, for Refs. A and Aa.....			B-9893
	4	Post, 5" Casing, 12' 10 1/4" long with Base and Hole drilled for wires, for Refs. B and Ba.....			B-9893
	5	Ladder, 16' 1 1/4" long, complete with Stay.....			B-10313
62563	6	Ladder Foundation Pier with two 1/2"x1 1/4" Sq. Hd. Bolts and Hex. Nuts.....			B-8848-10

UNION SWITCH & SIGNAL CO.

2-UNIT, THREE-COLOR STYLE "P-2" LIGHT GROUND SIGNALS

(Continued)

Order by Plate, Piece, Reference and Abbreviated Description Given in Heavy Face Type Only.

Piece	Ref.	Description	Drawing Reference
10276	7	Foundation Bolt, 1"x3' 0" with Hex. Nut and Plate Washer.....	7913-54
68687	8	Instrument Case (If any other case or lining is desired reference should be made to Plate L-1135)...	C-7589-6
142039	9	Bracket for mounting Style "P-2" Light Signals to 4", 5" or 6" Pipe.....	C-8034-18
54865	10	"U" Bolt, 3/4" with Hex. Nuts for attaching Ref. 9 to 4" Pipe.....	8782-102
43931	10a	"U" Bolt, 3/4" with Hex. Nuts for attaching Ref. 9 to 5" Pipe or Casing.....	8782-66
44199	10b	"U" Bolt, 3/4" with Hex. Nuts for attaching Ref. 9 to 6" Pipe.....	8782-69