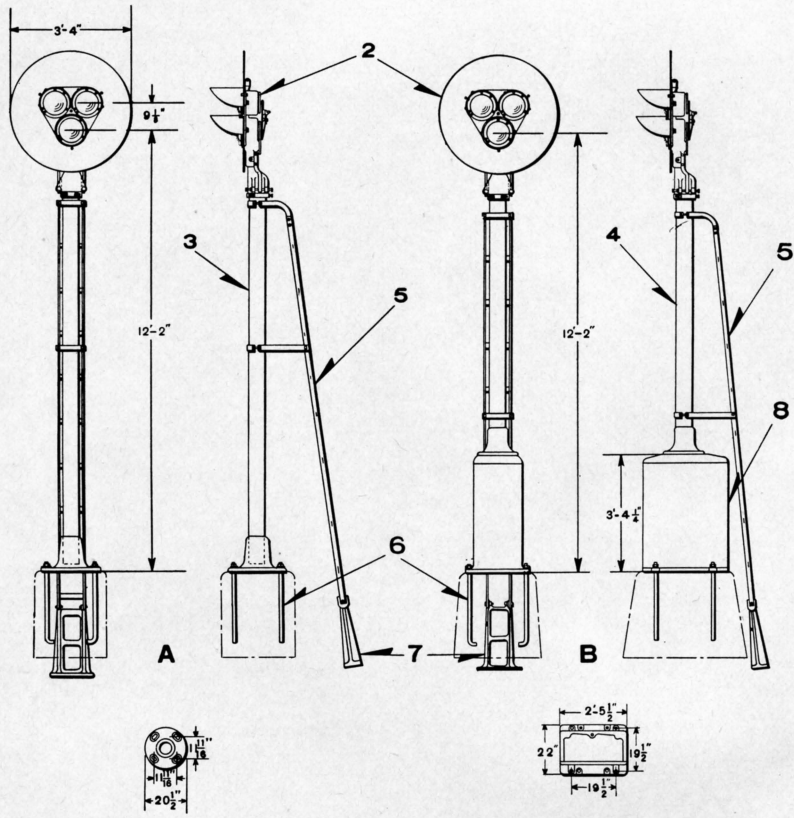


UNION SWITCH & SIGNAL CO.



1-UNIT, THREE-COLOR STYLE "TP-2" LIGHT GROUND SIGNALS

UNION SWITCH & SIGNAL CO.

1-UNIT, THREE-COLOR STYLE "TP-2" LIGHT GROUND SIGNALS

For Signal Units refer to Plates B-2735 and B-2780. Unless otherwise specified all Signals will be furnished having dimensions as shown, Unit with Red Bottom; Yellow Right Hand Top and Green Left Hand Top Lenses with 10-Volt, 18-Watt, double filament lamps.

Backlight can be furnished on bottom light of all Signals but is not included unless mentioned in order.

Order by Plate, Piece, Reference and Abbreviated Description Given in Heavy Face Type Only.

1-Unit, Three-Color Style "TP-2" Light Ground Signal (D.C. or A.C. without Individual Transformers)					
Piece	Ref.	Unit Ref. Pl. B-2735	Size of Post	Remarks	Drawing Reference
	A	C	5" Casing		B-10325
	B	C	5" Casing	With Instrument Case Ref. 8	B-10325
Piece	Ref.	Description			Drawing Reference
	2	Three-Color Style "TP-2" Signal Unit (D.C. or A.C. without Individual Transformers) with Green L. H. Top; Yellow R. H. Top and Red Bottom Lenses (For details refer to Plate B-2735).....			B-10325-135
	3	Post, 5" Casing 10' 10 1/2" long with Base for Ref. A..			B-12440
	4	Post, 5" Casing 7' 6 1/4" long with Base for Ref. B....			B-12440
	5	Ladder, 10' 11" long, complete with Stay for Refs. A and B.....			B-10313-402
10276	6	Foundation Bolt, 1"x3' 0" with Hex. Nut and Plate Washer.....			7913-54
62563	7	Ladder Foundation Pier with two 1/2"x1 1/4" Sq. Hd. Bolts and Hex. Nuts.....			B-8848-10
68687	8	Instrument Case (If any other case or lining is desired reference should be made to Plate L-1135)....			C-7589-6