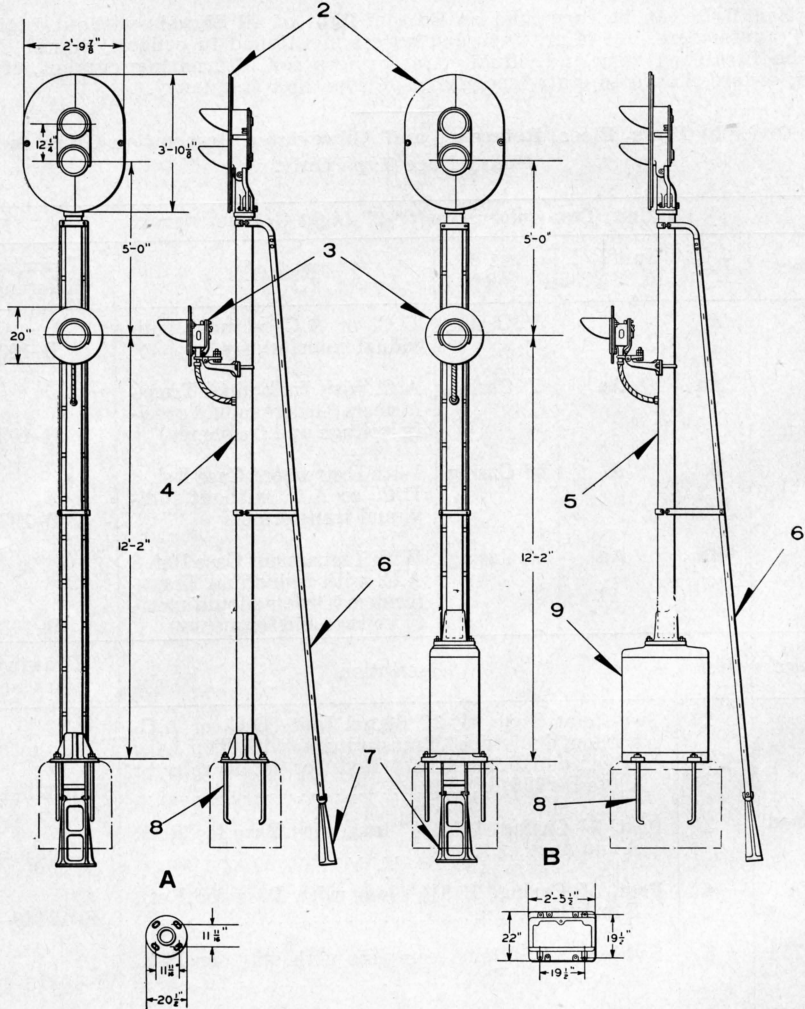


UNION SWITCH & SIGNAL CO.



2-UNIT, ONE AND TWO-COLOR STYLE "P-2" LIGHT GROUND SIGNALS

UNION SWITCH & SIGNAL CO.

2-UNIT, ONE AND TWO-COLOR STYLE "P-2" LIGHT GROUND SIGNALS

For Signal Units refer to Plates B-2735 and B-2740.

Unless otherwise specified, all Signals will be furnished having dimensions as shown, Top Unit with Red bottom and Green top Lenses; bottom unit with Red Lens, and with 10-Volt, 18-Watt double filament Lamps.

Backlight can be furnished on bottom light of all Signals without Individual Transformers, but is not included unless mentioned in order. Signal Units can be furnished with individual transformers for alternating current, if desired, orders should so state, specifying voltage and frequency.

Order by Plate, Piece, Reference and Abbreviated Description Given in Heavy Face Type Only.

2-Unit, One and Two-Color Style "P-2" Light Ground Signal					
Piece	Ref.	Unit Ref. Pl. B-2735	Size of Post	Remarks	Drawing Reference
	A	A	5" Casing	D.C. or A.C. without Individual Transformers	B-10325-190
	Aa	Aa	5" Casing	A.C. with Individual Transformers (Orders should specify voltage and frequency)	B-10325
	B	A	5" Casing	With Instrument Case Ref. 9 D.C. or A.C. without Individual Transformers	B-10325-206
	Ba	Aa	5" Casing	With Instrument Case Ref. 9 A.C. with Individual Transformers (Orders should specify voltage and frequency)	B-10325
Piece	Ref.	Description			Drawing Reference
	2	Two-Color Style "P-2" Signal Unit (D.C. or A.C. without Individual Transformers) with Top Lens Green and Bottom Lens Red (for details refer to Plate B-2735).....			B-10325-180
	3	One-Color Style "R-2" Signal Unit with Bracket, "U" Bolts and Conduit (For details refer to Plate B-2735).....			C-8965-18
	4	Post, 5" Casing 16' 0 ³ / ₄ " long with Base and Hole drilled for wires for Refs. A and Aa.....			B-9893
	5	Post, 5" Casing 12' 8 ¹ / ₂ " long with Base and Hole drilled for wires for Refs. B and Ba.....			B-9893
	6	Ladder 15' 11 ¹ / ₄ " long complete with Stay, for Refs. A, Aa, B and Ba.....			B-10313

PLATE B-2710

UNION SWITCH & SIGNAL CO.

2-UNIT, ONE AND TWO-COLOR STYLE "P-2" LIGHT GROUND SIGNALS

(Continued)

**Order by Plate, Piece, Reference and Abbreviated Description Given in
Heavy Face Type Only.**

Piece	Ref.	Description	Drawing Reference
62563	7	Ladder Foundation Pier with two ½"x1¼" Sq. Hd. Bolts and Hex. Nuts	B-8848-10
10276	8	Foundation Bolt, 1"x3' 0" with Hex. Nut and Plate Washer	7913-54
68687	9	Instrument Case (If any other case or lining is desired reference should be made to Plate L-1135)	C-7589-6