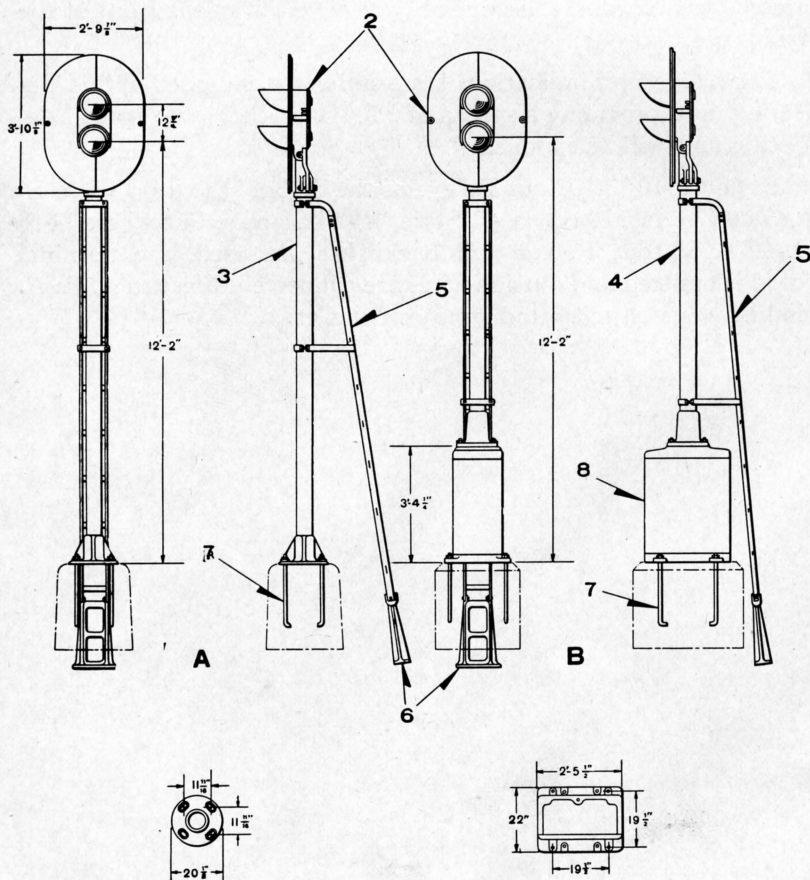


UNION SWITCH & SIGNAL CO.



1-UNIT, TWO-COLOR STYLE "P-2" LIGHT GROUND SIGNALS

UNION SWITCH & SIGNAL CO.

1-UNIT, TWO-COLOR STYLE "P-2" LIGHT GROUND SIGNALS

For Signal Units refer to Plates B-2735 and B-2740.

Unless otherwise specified, all Signals will be furnished having dimensions as shown, Unit with Red Bottom and Green Top Lenses and with 10-Volt, 18-Watt, double filament Lamps.

Backlight can be furnished on Bottom light of all Signals without Individual Transformers, but is not included unless mentioned in order. Signal Units can be furnished with individual transformers for alternating current, if desired, orders should so state, specifying voltage and frequency.

Order by Plate, Piece, Reference and Abbreviated Description Given in Heavy Face Type Only.

1-Unit, Two-Color Style "P-2" Light Ground Signal					
Piece	Ref.	Unit Ref. Pl. B-2735	Size of Post	Remarks	Drawing Reference
	A	A	5" Casing	D.C. or A.C. without individual transformers	B-10325
	Aa	Aa	5" Casing	A.C. with Individual Transformers (Orders should specify voltage and frequency)	B-10325
	B	A	5" Casing	With Instrument Case Ref. 8 D.C. or A.C. without individual transformers	B-10325
	Ba	Aa	5" Casing	With Instrument Case Ref. 8 A.C. with Individual Transformers (Orders should specify voltage and frequency)	B-10325

Piece	Ref.	Description	Drawing Reference
	2	Two-Color Style "P-2" Signal Unit (D.C. or A.C. without individual Transformers) with Top Lens Green and Bottom Lens Red (for details refer to Plate B-2735).....	B-10325-180
149063	3	Post, 5" Casing, 11' 2 1/2" long with Base for Refs. A and Aa.....	B-12440-27
149713	4	Post, 5" Casing, 7' 9 1/2" long with Base for Refs. B and Ba.....	B-12440-27
142754	5	Ladder, 11' 3" long, complete with stay for Refs. A, Aa, B and Ba.....	B-10313-402
62563	6	Ladder Foundation Pier with two 1/2"x1 1/4" Sq. Hd. Bolts and Hex. Nuts.....	B-8848-10
10276	7	Foundation Bolt, 1"x3' 0" with Hex. Nut with and Plate Washer.....	7913-54
68687	8	Instrument Case (If any other case or lining is desired reference should be made to Plate L-1135)...	C-7589-6