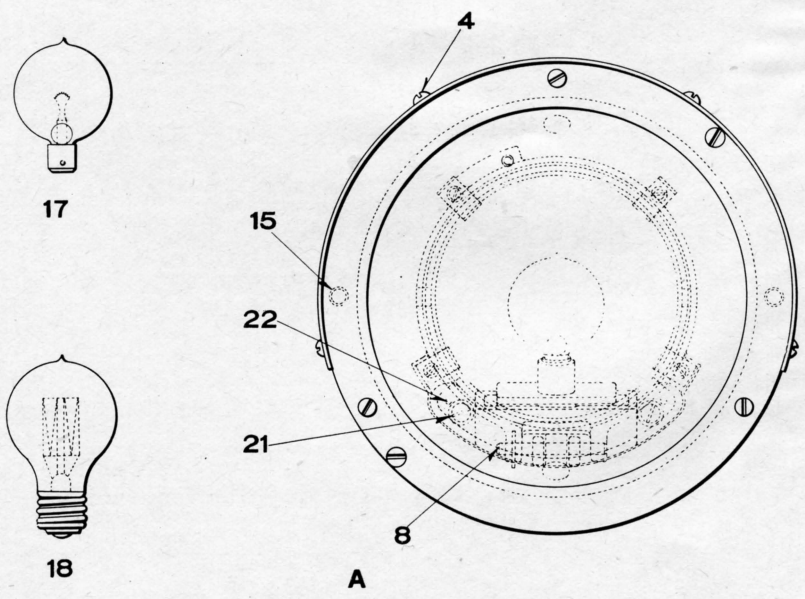
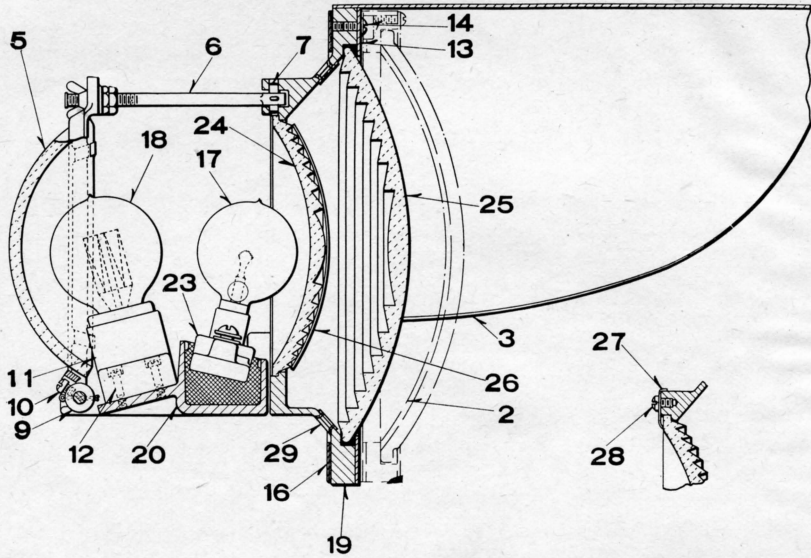


UNION SWITCH & SIGNAL CO.



LAMP UNITS AND ELECTRIC LAMPS FOR TWO AND THREE-COLOR  
STYLE "L" A.C. SIGNAL UNITS

UNION SWITCH & SIGNAL CO.

LAMP UNITS AND ELECTRIC LAMPS FOR TWO AND THREE-COLOR  
STYLE "L" A.C. SIGNAL UNITS

Unless Otherwise Specified all Lamp Units will be Furnished with 6-Volt, 29-Watt Main Lamp and 55-Volt, 25-Watt Auxiliary or Pilot Lamp.

Order by Plate, Piece, Reference and Description

Drawing references are shown for convenience in checking material with shipping lists and invoices.

Piece	Ref.	Description	Drawing Reference
71193	A	Lamp Unit, complete with Red Lens (with bulbs)....	C-8901-2
71210	Aa	Lamp Unit, complete with Yellow Lens (with bulbs) ..	C-8901-2
71208	Ab	Lamp Unit, complete with Green Lens (with bulbs) ...	C-8901-2
71209	Ac	Lamp Unit, complete with Clear Lens (with bulbs) ...	C-8901-2
116430	Ad	Lamp Unit, complete with Red Lens (with bulbs), arranged for backlight.....	C-8901-2
90897	2	Deflecting Prism, complete (10° spread).....	C-8901-8
90898	2a	Deflecting Prism, complete (20° spread).....	C-8901-8
65898	3	Hood for Lamp Unit.....	C-8842-15
	4	Machine Screw No. 10-30 x $\frac{1}{4}$ " Rd. Hd. S. (Cad. Pl.) for 3.	
76716	5	Reflector, complete.....	C-8842-11
71198	6	Eye Bolt, complete, with nuts.....	8034-150
71199	7	Pin with $\frac{1}{16}$ " x $\frac{3}{4}$ " Cotter (Cad. Pl.) for 6.....	8097-992
71195	8	Pin with $\frac{1}{16}$ " x 1" Cotter (Cad. Pl.) for 5.....	8063-130
71196	9	Separator.....	8072-539
71197	10	Screw.....	8098-1014
	11	Lamp Socket.	
	12	Machine Screw No. 8-36 x $\frac{3}{4}$ " Fil. Hd. Br. for secur- ing 11 to lamp support.	

UNION SWITCH & SIGNAL CO.

LAMP UNITS AND ELECTRIC LAMPS FOR TWO AND THREE-COLOR  
STYLE "L" A.C. SIGNAL UNITS

(Continued)

Unless Otherwise Specified all Lamp Units will be Furnished with 6-Volt, 29-Watt Main Lamp and 55-Volt, 25-Watt Auxiliary or Pilot Lamp.

Order by Plate, Piece, Reference and Description

Drawing references are shown for convenience in checking material with shipping lists and invoices.

Piece	Ref.	Description	Drawing Reference
71187	13	Lens Ring.....	7436-106
	14	Machine Screw No. 10-30 x $\frac{3}{8}$ " Rd. Hd. S. (Cad. Pl.) for 13.	
	15	Machine Screw No. 14-24 x $\frac{3}{8}$ " Rd. Hd. Br. used to plug holes in lens housing when deflecting prism is not used.	
	16	Gasket (Rubber Tape) 2'-6" long.	
80837	17	Electric Lamp (Main Lamp) 6-volt, 29-watt.....	B-12409-10
68468	18	Electric Lamp (Auxiliary or Pilot Lamp) 55-volt, 25-watt.....	B-12409-6
		<p>"The lamp unit shown is assembled by trained workmen with specially designed equipment which can be handled satisfactorily only at the factory. This factory adjustment makes possible the maximum efficiency and uniformity obtained with these signals, and hence the detail parts involved in the assembly are not listed separately. Units in need of repairs should be sent to Swissvale. Do not change either the outer or the inner lens in any unit without sending to the factory for adjustment."</p>	