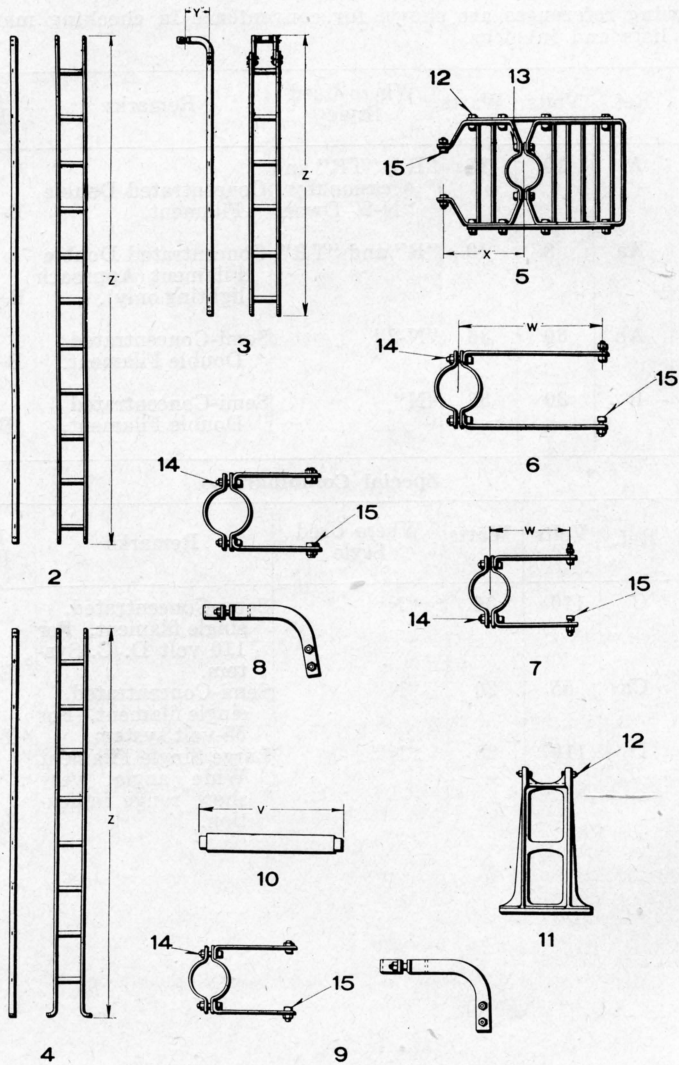


UNION SWITCH & SIGNAL CO.



LADDER DETAILS FOR STYLE "R," "TR" AND "N" SIGNALS

UNION SWITCH & SIGNAL CO.

LADDER DETAILS FOR STYLE "R," "TR" AND "N" SIGNALS

Order by Plate, Piece, Reference and Description

Drawing references are shown for convenience in checking material with shipping lists and invoices.

Piece	Ref.	Description	Drawing Reference
	2	Ladder, complete as shown. (Specify "Z" dimension when ordering).....	B-10313-195
	3	Ladder, complete as shown for 5" Pipe. (Specify "Z" and "Y" dimensions when ordering).....	B-10313-183
	4	Ladder, complete as shown with foot. (Specify "Z" dimension when ordering).....	B-10313-267
68928	5	Platform for 5" Casing, complete as shown ("X" dimension 13 $\frac{1}{2}$ "') with two $\frac{1}{2}$ " x 1" Sq. Hd. Bolts and Hex. Nuts.....	B-7501-60
112998	5a	Platform for 5" Pipe, complete ("X" dimension 13 $\frac{3}{8}$ "') with two $\frac{1}{2}$ " x 1" Sq. Hd. Bolts and Hex Nuts.....	B-7501-67
113002	5b	Platform for 5" Pipe, complete ("X" dimension 20 $\frac{3}{8}$ "') with two $\frac{1}{2}$ " x 1" Sq. Hd. Bolts and Hex Nuts.....	B-7501-68
120288	5c	Platform for 6" Pipe, complete ("X" dimension 20 $\frac{1}{4}$ "') with two $\frac{1}{2}$ " x 1" Sq. Hd. Bolts and Hex. Nuts.....	B-7501-76
68843	6	Stay for 5" Casing, complete ("W" dimension 17 $\frac{3}{4}$ "') with two $\frac{1}{2}$ " x 1" Sq. Hd. Bolts and Hex. Nuts.....	B-7501-22
77369	6a	Stay for 5" Casing, complete ("W" dimension 18 $\frac{1}{4}$ "') with two $\frac{1}{2}$ " x 1" Sq. Hd. Bolts and Hex. Nuts.....	B-7501-22
97068	6b	Stay for 5" Pipe, complete ("W" dimension 2'-0"') with two $\frac{1}{2}$ " x 1" Sq. Hd. Bolts and Hex. Nuts.....	B-7501-66
89028	6c	Stay for 6" Pipe, complete ("W" dimension 23 $\frac{1}{4}$ "') with two $\frac{1}{2}$ " x 1" Sq. Hd. Bolts and Hex. Nuts.....	B-7501-34
68865	6d	Stay for 5" Pipe, complete ("W" dimension 10"') with two $\frac{1}{2}$ " x 1" Sq. Hd. Bolts and Hex. Nuts.....	B-7501-22
68893	6e	Stay for 5" Pipe, complete ("W" dimension 17"') with two $\frac{1}{2}$ " x 1" Sq. Hd. Bolts and Hex. Nuts.....	B-7501-22
68872	7	Stay, complete for 4" Pipe ("W" dimension 10"') with two $\frac{1}{2}$ " x 1" Sq. Hd. Bolts and Hex. Nuts.....	B-7501-22
112018	7a	Stay, complete for 4" Pipe ("W" dimension 19"') with two $\frac{1}{2}$ " x 1" Sq. Hd. Bolts and Hex. Nuts.....	B-7501-66

UNION SWITCH & SIGNAL CO.

LADDER DETAILS FOR STYLE "R," "TR" AND "N" SIGNALS
(Continued)

Order by Plate, Piece, Reference and Description

Drawing references are shown for convenience in checking material with shipping lists and invoices.

Piece	Ref.	Description	Drawing Reference
74847	7b	Stay, complete for 4" Pipe ("W" dimensions 10 $\frac{3}{4}$ ") with two $\frac{1}{2}$ " x 1" Sq. Hd. Bolts and Hex. Nuts.....	B-7501-51
68858	7c	Stay, complete for 4" Pipe ("W" dimensions 18") with two $\frac{1}{2}$ " x 1" Sq. Hd. Bolts and Hex. Nuts.....	B-7501-22
68642	8	Clamp Top for 5" Casing, complete as shown, with four $\frac{1}{2}$ " x 1" Sq. Hd. Bolts and Hex. Nuts.....	B-7501-8
68652	8a	Clamp Top for 5" Pipe, complete with four $\frac{1}{2}$ " x 1" Sq. Hd. Bolts and Hex. Nuts.....	B-7501-8
68635	9	Clamp Top for 5" Pipe, complete with four $\frac{1}{2}$ " x 1" Sq. Hd. Bolts and Hex. Nuts.....	B-7501-8
68871	9a	Clamp Top, complete for 4" Pipe (10" centers) with four $\frac{1}{2}$ " x 1" Sq. Hd. Bolts and Hex. Nuts.....	B-7501-22
68864	9b	Clamp Top, complete for 4" Pipe (10" centers) with four $\frac{1}{2}$ " x 1" Sq. Hd. Bolts and Hex. Nuts.....	B-7501-22
68818	9c	Clamp Top, complete for 4" Pipe (10 $\frac{3}{4}$ " centers) with four $\frac{1}{2}$ " x 1" Sq. Hd. Bolts and Hex. Nuts.....	B-7501-22
139	10	Rung for Ladders ("V" dimension 8").....	B-8365-1
63512	10a	Rung for Platforms ("V" dimension 19 $\frac{1}{2}$ ").....	B-8365-50
62563	11	Ladder Foundation Pier with two $\frac{1}{2}$ " x 1 $\frac{1}{4}$ " Sq. Hd. Bolts and Hex. Nuts.....	B-8848-10
	12	Bolt $\frac{1}{2}$ " x 1 $\frac{1}{4}$ " Sq. Hd. with Hex. Nut for 5 and 11.	
59653	13	Bolt $\frac{1}{2}$ " x 2 $\frac{1}{4}$ " Sq. Hd. with Hex. Nut for 5.....	8280-81
36832	14	Bolt $\frac{1}{2}$ " x 2" Sq. Hd. with Hex. Nut for 6,7,8 and 9...	8280-81
	15	Bolt $\frac{1}{2}$ " x 1" Sq. Hd. with Hex. Nut for 5,6,7,8 and 9.	