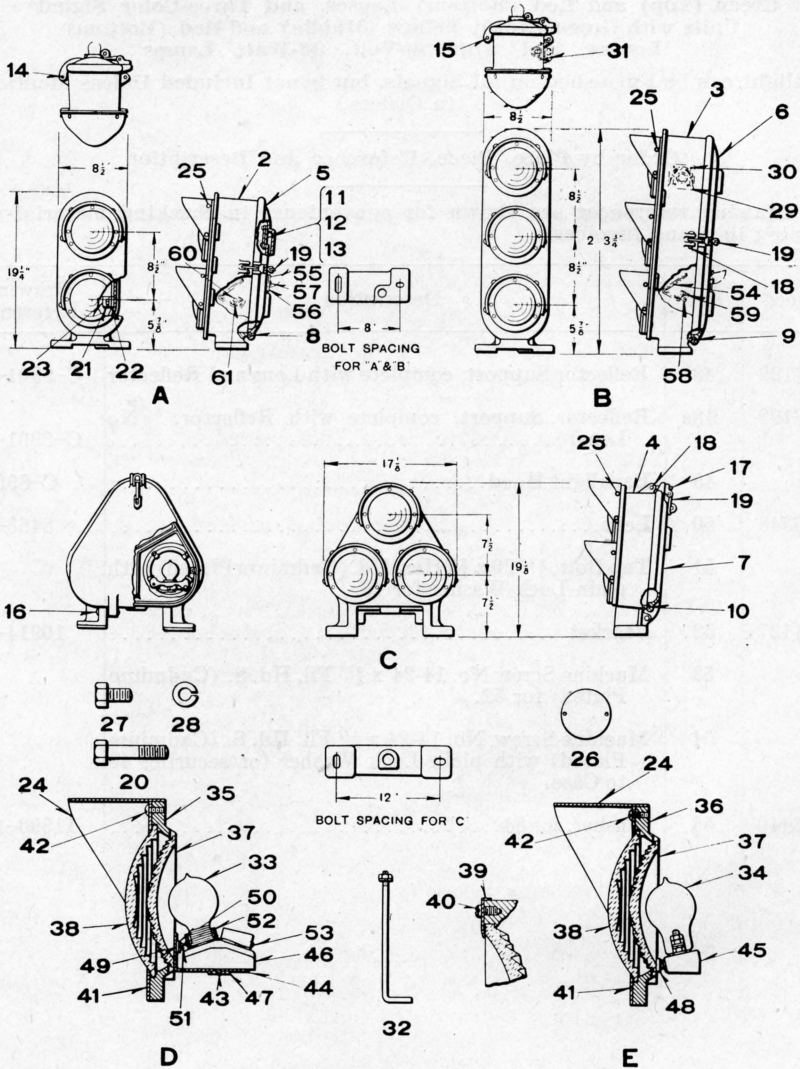


UNION SWITCH & SIGNAL CO.



STYLE "N," "N-2," "TN" AND "TN-2" COLOR LIGHT DWARF SIGNALS

UNION SWITCH & SIGNAL CO.

STYLE "N," "N-2," "TN" and "TN-2" COLOR LIGHT DWARF SIGNALS

Unless Otherwise Specified, all Signals will be Furnished with 30-Volt, 36-Watt Lamps

Backlight can be Furnished on all Style "N" and "N-2" Signals, but is not Included Unless Mentioned in Order

If Lenses of Different Colors Than Those Listed Below are Desired, Orders Must so State

Order by Plate, Piece, Reference and Description

Drawing references are shown for convenience in checking material with shipping lists and invoices.

Piece	Ref.	Description	Drawing Reference
116728	A	Two-Color Style "N" Dwarf Light Signal, complete for mounting on concrete Foundation, with yellow and red Lenses.....	B-10325-46
	Aa	Two-Color Style "N" Dwarf Light Signal, complete for mounting on concrete Foundation, with yellow and red Lenses and Backlight.....	B-10325-
	Ab	Two-Color Style "N-2" Dwarf Light Signal, complete for mounting on concrete Foundation, with yellow and red Lenses.....	B-10325-46
	Ac	Two-Color Style "N-2" Dwarf Light Signal, complete, for mounting on concrete Foundation, with Top Light yellow and Bottom blank.....	B-10325-46
	Ad	Two-Color Style "N-2" Dwarf Light Signal, complete, for mounting on concrete Foundation, with yellow and red Lenses and Backlight.....	B-10325-
99693	B	Three-Color Style "N" Dwarf Light Signal, complete, for mounting on concrete Foundation, with green, yellow and red Lenses.....	B-10325-46
	Ba	Three-Color Style "N" Dwarf Light Signal, complete for mounting on concrete Foundation, with green, yellow and red Lenses and Backlight.....	B-10325-
	Bb	Three-Color Style "N-2" Dwarf Light Signal, complete, for mounting on concrete Foundation, with Push Button, green, yellow and red Lenses.....	B-10325-46
	Bc	Three-Color Style "N-2" Dwarf Light Signal, complete, for mounting on concrete Foundation (without Push Button) with green, yellow and red Lenses.....	B-10325-46
	Bd	Three-Color Style "N-2" Dwarf Light Signal, complete, for mounting on concrete Foundation (without Push Button) with green, yellow and red Lenses and Backlight.....	B-10325-

UNION SWITCH & SIGNAL CO.

STYLE "N," "N-2," "TN" and "TN-2" COLOR LIGHT DWARF SIGNALS
(Continued)

Unless Otherwise Specified, all Signals will be Furnished with 30-Volt, 36-Watt Lamps
Backlight can be Furnished on all Style "N" and "N-2" Signals, but is not Included Unless Mentioned in Order
If Lenses of Different Colors Than Those Listed Below are Desired, Orders Must so State

Order by Plate, Piece, Reference and Description

Drawing references are shown for convenience in checking material with shipping lists and invoices.

Piece	Ref.	Description	Drawing Reference
123869	C	Three-Color Style "TN-2" Dwarf Light Signal, complete for mounting on concrete Foundation, red, clear and green Lenses.....	B-10325-92
	Ca	Three-Color Style "TN" Dwarf Light Signal, complete for mounting on concrete Foundation, with red, clear and green Lenses.....	B-10325-92

Lamp Unit, Complete

Piece	Ref.	Color of lens	Type of Socket	Style of Signal	Remarks	Drawing Reference
99468	D	Green	Lamp Grip Shell	"N" & "TN"		C-8901-17
80938	Da	Red	Lamp Grip Shell	"N" & "TN"		C-8901-17
80937	Db	Yellow	Lamp Grip Shell	"N" & "TN"		C-8901-17
99443	Dc	Clear	Lamp Grip Shell	"N" & "TN"		C-8901-17
112829	Dd	Yellow	Marine Shell	"N" & "TN"	For Elevated Structure	C-8901-17
112830	De	Red	Marine Shell	"N" & "TN"	For Elevated Structure	C-8901-17
126383	Df	Green	Marine Shell	"N" & "TN"	For Elevated Structure	C-8901-17
120744	E	Green		"N-2" & "TN-2"		C-8901-36
120208	Ea	Yellow		"N-2" & "TN-2"		C-8901-36
120720	Eb	Red		"N-2" & "TN-2"		C-8901-36
122599	Ec	Clear		"N-2" & "TN-2"		C-8901-36

UNION SWITCH & SIGNAL CO.

STYLE "N," "N-2," "TN" and "TN-2" COLOR LIGHT DWARF SIGNALS
(Continued)

Unless Otherwise Specified, all Signals will be Furnished with 30-Volt, 36-Watt Lamps

Backlight can be Furnished on all Style "N" and "N-2" Signals, but is not Included Unless Mentioned in Order

If Lenses of Different Colors Than Those Listed Below are Desired, Orders Must so State

Order by Plate, Piece, Reference and Description

Drawing references are shown for convenience in checking material with shipping lists and invoices.

Piece	Ref.	Description	Drawing Reference
116672	2	Case for Two-Color Style "N" Dwarf Light Signal..	C-8901-37
116725	2a	Case and Door, complete for Two-Color Style "N" Dwarf Light Signal.....	C-8900-13
126185	2b	Case and Door, complete for Two-Color Style "N" Dwarf Light Signal, arranged for Backlight.....	C-8900-24
116724	2c	Case for Two-Color Style "N-2" Dwarf Light Signal	C-8901-37
116673	2d	Case and Door, complete for Two-Color Style "N-2" Dwarf Light Signal.....	C-8900-12
	2e	Case and Door, complete for Two-Color Style "N-2" Dwarf Light Signal, arranged for Backlight.....	C-8900-
99690	3	Case, for Three-Color Style "N" Dwarf Light Signal	C-8901-27
99691	3a	Case and Door, complete for Three-Color Style "N" Dwarf Light Signal.....	C-8900-5
124133	3b	Case and Door, complete for Three-Color Style "N" Dwarf Light Signal, arranged for Backlight.....	C-8900-22
120745	3c	Case for Three-Color Style "N-2" Dwarf Light Signal.....	C-8901-27
120746	3d	Case and Door, complete for Three-Color Style "N-2" Dwarf Light Signal.....	C-8900-18
	3e	Case and Door, complete for Three-Color Style "N-2" Dwarf Light Signal, arranged for Backlight	C-8900-
122597	3f	Case for Three-Color Style "N-2" Dwarf Light Signal, arranged for Push Button.....	C-8901-27
122598	3g	Case and Door, complete for Three-Color Style "N-2" Dwarf Light Signal, arranged for Push Button.....	C-8900-18

UNION SWITCH & SIGNAL CO.

STYLE "N," "N-2," "TN" and "TN-2" COLOR LIGHT DWARF SIGNALS
(Continued)

Unless Otherwise Specified, all Signals will be Furnished with 30-Volt, 36-Watt Lamps

Backlight can be Furnished on all Style "N" and "N-2" Signals, but is not Included Unless Mentioned in Order

If Lenses of Different Colors Than Those Listed Below are Desired, Orders Must so State

Order by Plate, Piece, Reference and Description

Drawing references are shown for convenience in checking material with shipping lists and invoices.

Piece	Ref.	Description	Drawing Reference
123593	4	Case for Three-Color Style "TN" Dwarf Light Signal.....	C-9011-5
123594	4a	Case and Cover, complete for Three-Color Style "TN" Dwarf Light Signal.....	C-8900-20
68248	5	Door, complete with Flax Packing, Staple and Ventilators for Two-Color Style "N" and "N-2" Dwarf Light Signals.....	C-8901-19
	5a	Door, complete with Flax Packing, Staple and Ventilators, arranged for Backlight for Two-Color Style "N" and "N-2" Dwarf Light Signal.....	C-8901-42
68252	6	Door, complete with Flax Packing, Staple and Ventilators for Three-Color Style "N" and "N-2" Dwarf Light Signals.....	C-8901-14
	6a	Door, complete with Flax Packing, Staple and Ventilators, arranged for Backlight for Three-Color Style "N" and "N-2" Dwarf Light Signal.....	C-8901-40
	7	Cover, complete with Flax Packing, Staple and Ventilators for Three-Color Style "TN" Dwarf Light Signal.....	C-9011-6
	8	Flax Packing $\frac{3}{8}$ " Sq. 3'-5 $\frac{1}{4}$ " long for 5 and 5a.	
	9	Flax Packing $\frac{3}{8}$ " Sq. 4'-10" long, for 6 and 6a.	
	10	Flax Packing $\frac{3}{8}$ " Sq. 4'-2" long, for 7.	
21918	11	Ventilator Screen Holder.....	B-7318-5
21919	12	Ventilator Screen only.....	B-7318-5
	13	Machine Screw No. 10-30 x $\frac{1}{4}$ " Rd. Hd. S. (Cadmium Plated) for attaching 11 and 12 to Doors.	
5873	14	Pin $\frac{3}{8}$ " x 2- $\frac{5}{16}$ " for fastening Door to Case 2, 2a, 2b and 2c.....	B-10207-1

UNION SWITCH & SIGNAL CO.

STYLE "N," "N-2," "TN" and "TN-2" COLOR LIGHT DWARF SIGNALS
(Continued)

Unless Otherwise Specified, all Signals will be Furnished with 30-Volt, 36-Watt Lamps

Backlight can be Furnished on all Style "N" and "N-2" Signals, but is not Included Unless Mentioned in Order

If Lenses of Different Colors Than Those Listed Below are Desired, Orders Must so State

Order by Plate, Piece, Reference and Description

Drawing references are shown for convenience in checking material with shipping lists and invoices.

Piece	Ref.	Description	Drawing Reference
49634	15	Pin $\frac{3}{8}$ " x $3\text{-}\frac{3}{8}$ " for fastening Door to Case 3 to 3e inc..	B-10207-1
47304	16	Pin $\frac{3}{8}$ " x $2\text{-}\frac{1}{8}$ " for fastening Cover 7 to Case 4.....	B-10207-1
50126	17	Eye Bolt.....	8034-64
37075	18	Pin $\frac{3}{8}$ " x $1\text{-}\frac{7}{8}$ " for fastening Eye Bolt 17 to Lugs on Case.....	B-10207-1
72832	19	Hasp, complete.....	8299-66
	20	Tap Bolt $\frac{1}{4}$ " x $1\frac{1}{4}$ " Hex. Hd. (Cadmium Plated) with plain Lock Washer 28 for attaching Lens Unit to Case.	
68109	21	Wire Guide.....	11893-65
68414	22	Insulation.....	8750-2047
	23	Machine Screw No. 10-30 x $\frac{1}{2}$ " Rd. Hd. S. (Cadmium Plated) with Hex. Nut 23a.	
40058	23a	Hex Nut for 23.....	8265-126
80884	24	Hood.....	C-8901-20
	25	Machine Screw No. 10-30 x $\frac{1}{4}$ " Rd. Hd. S. (Cadmium Plated) for securing 24 to Lens Housing.	
68070	26	Sheet Steel Disc for Blank Space.....	7436-114
	27	Tap Bolt $\frac{1}{4}$ " x $\frac{1}{2}$ " Hex. Hd. (Cadmium Plated) with plain Lock Washer 28 for securing 26 to Lens Housing.	
	28	Lock Washer $\frac{1}{4}$ " plain S. ($\frac{1}{8}$ " x $\frac{1}{16}$ "') for 20 and 27.	
122582	29	Push Button, complete as shown in dot and dash for Ba.....	B-9918-25

UNION SWITCH & SIGNAL CO.

STYLE "N," "N-2," "TN" and "TN-2" COLOR LIGHT DWARF SIGNALS
(Continued)

Unless Otherwise Specified, all Signals will be Furnished with 30-Volt, 36-Watt Lamps

Backlight can be Furnished on all Style "N" and "N-2" Signals, but is not Included Unless Mentioned in Order

If Lenses of Different Colors Than Those Listed Below are Desired, Orders Must so State

Order by Plate, Piece, Reference and Description

Drawing references are shown for convenience in checking material with shipping lists and invoices.

Piece	Ref.	Description	Drawing Reference
	30	Machine Screw No. 8-36 x $\frac{3}{8}$ " Fil. Hd. Br. for attaching 29 to Case.	
122617	31	Insulation used between 29 and Case.....	8078-1375
31402	32	Fnd. Bolt $\frac{5}{8}$ " x 15- $\frac{1}{2}$ ", with Hex. Nut and Std. Plate Washer.....	7913-175
112968	33	Electric Lamp, 30-volt, 36-watt, for D.....	B-12409-6
120620	34	Electric Lamp, 30-volt, 36-watt, for E.....	B-12409-16
		<p>"The Lamp Unit Ref. "E" shown for Style "N-2" and "TN-2" Dwarf Light Signals is assembled by trained workmen with specially designed equipment which can be handled satisfactorily only at the factory. This factory adjustment makes possible the maximum efficiency and uniformity obtained with these signals, and hence the detail parts involved in the assembly are not listed separately. "N-2" and "TN-2" Lamp Units in need of repairs should be sent to Swissvale.</p> <p>Do not change either the outer or the inner Lens in any Style "N-2" or "TN-2" Unit without sending to the factory for adjustment."</p>	
68489	35	Lens Housing for Style "N" and "TN" Dwarf Light Signal.....	C-8901-17
	36		
68162	37	Yellow Back Lens, 5 $\frac{1}{2}$ ".....	B-8276-23
71330	37a	Clear Back Lens, 5 $\frac{1}{2}$ ".....	B-8276-23
71331	37b	Green Back Lens, 5 $\frac{1}{2}$ ".....	B-8276-23
71329	37c	Red Back Lens, 5 $\frac{1}{2}$ ".....	B-8276-23
68507	38	Clear Front Lens, 6 $\frac{3}{8}$ ".....	B-8276-30
76735	39	Clip for holding Back Lens in Lens Housing.....	11893-31

UNION SWITCH & SIGNAL CO.

STYLE "N," "N-2," "TN" and "TN-2" COLOR LIGHT DWARF SIGNALS
(Continued)

Unless Otherwise Specified, all Signals will be Furnished with 30-Volt, 36-Watt Lamps

Backlight can be Furnished on all Style "N" and "N-2" Signals, but is not Included Unless Mentioned in Order

If Lenses of Different Colors Than Those Listed Below are Desired, Orders Must so State

Order by Plate, Piece, Reference and Description

Drawing references are shown for convenience in checking material with shipping lists and invoices.

Piece	Ref.	Description	Drawing Reference
	40	Machine Screw No. 10-30 x $\frac{1}{4}$ " Fil. Hd. Br. for securing 39 to 35 or 36.	
68508	41	Lens Ring.....	7436-112
	42	Machine Screw No. 10-30 x $\frac{3}{8}$ " Rd. Hd. S. (Cadmium Plated) for fastening 41 to 35 or 36.	
	43	Machine Screw No. 10-30 x $\frac{5}{8}$ " Fil. Hd. Br. for securing 47 to 46.	
111760	44	Lamp Support for 46 and 46a.....	11893-121
	45		
87187	46	Lamp Socket (Lamp Grip Receptacle) for D.....	B-9954-11
87214	46a	Lamp Socket (Marine Shell Receptacle) for Elevated Structure.....	B-9954-11
111757	47	Locking Plate for 46 and 46a.....	9999-119
	48		
26381	49	Washer.....	7826-78
	50	Lock Washer No. 10 Plain S. ($\frac{1}{8}$ " x $\frac{3}{64}$ ")	
	51	Machine Screw No. 10-30 x $\frac{1}{2}$ " Fil. Hd. Br.	
122102	52	Insulating Tubing.....	B-10277-1
	53	No. 32 Rubber Band.	
124129	54	Reflector Support, complete with Lens and Reflector	C-8901-39
126199	54a	Reflector Support, complete with Reflector. (No Lens).....	C-8901-39
124132	55	Backlight Hood.....	C-8901-41

UNION SWITCH & SIGNAL CO.

STYLE "N," "N-2," "TN" and "TN-2" COLOR LIGHT DWARF SIGNALS
(Continued)

Unless Otherwise Specified, all Signals will be Furnished with 30-Volt, 36-Watt Lamps

Backlight can be Furnished on all Style "N" and "N-2" Signals, but is not Included Unless Mentioned in Order

If Lenses of Different Colors Than Those Listed Below are Desired, Orders Must so State

Order by Plate, Piece, Reference and Description

Drawing references are shown for convenience in checking material with shipping lists and invoices.

Piece	Ref.	Description	Drawing Reference
116348	56	Lens.....	8468-33
	57	Tap Bolt, $\frac{1}{4}$ "-20 x $\frac{3}{4}$ " Hex. Hd. (Cadmium Plated) with plain Lock Washer for 55.	
124127	58	Bracket.....	10914-38
	59	Machine Screw No. 14-24 x $\frac{3}{8}$ " Fil. Hd. S. (Cadmium Plated) for 58.	
	60	Machine Screw No. 14-24 x $\frac{3}{8}$ " Fil. Hd. S. (Cadmium Plated) with plain Lock Washer for securing 54 to Case.	
116440	61	Washer for 60.....	11893-144