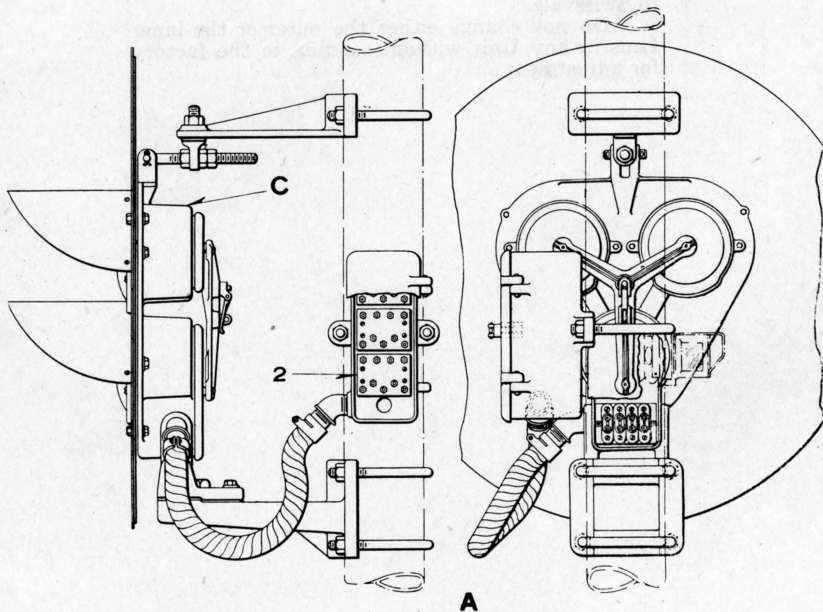
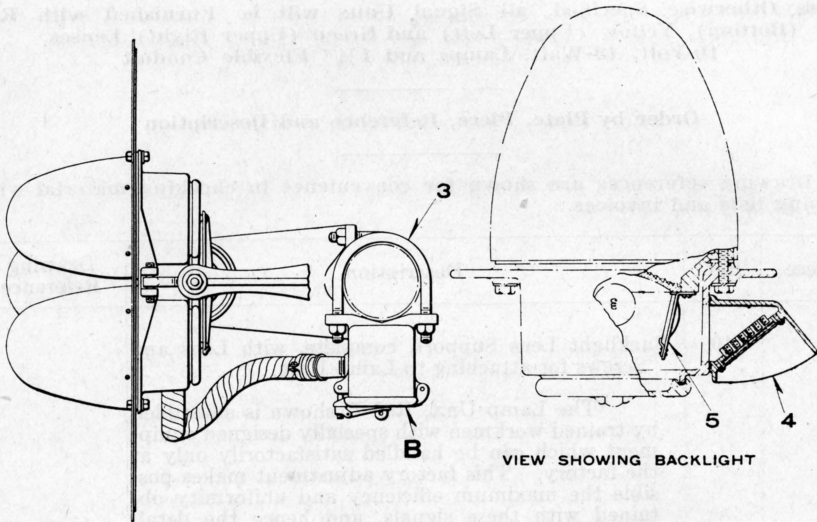


UNION SWITCH & SIGNAL CO.



STYLE "TR" SIGNAL UNITS WITH INDIVIDUAL TRANSFORMERS MOUNTED IN CASE

UNION SWITCH & SIGNAL CO.

STYLE "TR" SIGNAL UNITS WITH INDIVIDUAL TRANSFORMERS  
MOUNTED IN CASE

Unless Otherwise Specified, all Signal Units will be Furnished with Red (Bottom), Yellow (Upper Left) and Green (Upper Right) Lenses, 10-Volt, 18-Watt Lamps and 1 1/4" Flexible Conduit

Order by Plate, Piece, Reference and Description

Drawing references are shown for convenience in checking material with shipping lists and invoices.

Piece	Ref.	Description	Drawing Reference
	A	Three-Color, A. C. Style "TR" Signal Unit, complete, with individual Transformers mounted in Case, Background and Fittings for attaching to 5" Pipe or Casing. (Specify voltage and frequency).....	B-10325-
	Aa	Three-Color, A. C. Style "TR" Signal Unit, complete, with Backlight, individual Transformers mounted in Case, Background and Fittings for attaching to 5" Pipe or Casing. (Specify voltage and frequency).....	B-10325-
	Ab	Three-Color, A. C. Style "TR" Signal Unit, complete, with individual Transformers mounted in Case, Background and Fittings for attaching to 6" Pipe. (Specify voltage and frequency).....	B-10325-
	Ac	Three-Color, A. C. Style "TR" Signal Unit, complete, with Backlight, individual Transformers mounted in Case, Background and Fittings for attaching to 6" Pipe. (Specify voltage and frequency).....	B-10325-
	B	Case, complete, with three Transformers, "U" Bolt and Hex. Nuts for attaching to 5" Pipe or Casing. (Specify voltage and frequency).....	
	Ba	Case, complete, with three Transformers, "U" Bolt and Hex. Nuts for attaching to 6" Pipe. (Specify voltage and frequency).....	

UNION SWITCH & SIGNAL CO.

STYLE "TR" SIGNAL UNITS WITH INDIVIDUAL TRANSFORMERS  
MOUNTED IN CASE

(Continued)

Unless Otherwise Specified, all Signal Units will be Furnished with Red (Bottom), Yellow (Upper Left) and Green (Upper Right) Lenses, 10-Volt, 18-Watt Lamps and 1 1/4" Flexible Conduit

Order by Plate, Piece, Reference and Description

Drawing references are shown for convenience in checking material with shipping lists and invoices.

Three-Color Style "TR" Light Signal Unit, Complete (Without Background, Transformers and Fittings for Attaching to Post)						
Piece	Ref.	Color of Lenses			Backlight	Drawing Reference
		L. H. Top	R. H. Top	Bottom		
122203	C	Yellow	Green	Red	without	C-8900-19
122314	Ca	Clear	Green	Red	without	C-8900-19
123737	Cb	Yellow	Blank	Red	Without	C-8900-19
123738	Cc	Blank	Green	Red	without	C-8900-19
	Cd	Yellow	Green	Red	with	C-8900-

Piece	Ref.	Description	Drawing Reference
119356	2	Light Transformer, complete, 110 volts, 60 cycles.....	C-8605-5
125688	2a	Light Transformer, complete, 110 volts, 25 cycles.....	C-8605-14
	3	"U" Bolt, with Hex. Nuts for attaching B to 5" Pipe or Casing .....	8782-
	3a	"U" Bolt, with Hex. Nuts for attaching B to 6" Pipe .....	8782-
	4	Backlight, complete, with Reflector and Glass Shield .....	
	5	Backlight Lens Support, complete, with Lens and Screws for attaching to Lamp Unit .....	

For all other details of Signal Units not listed on this Plate, refer to Plate B-2540.