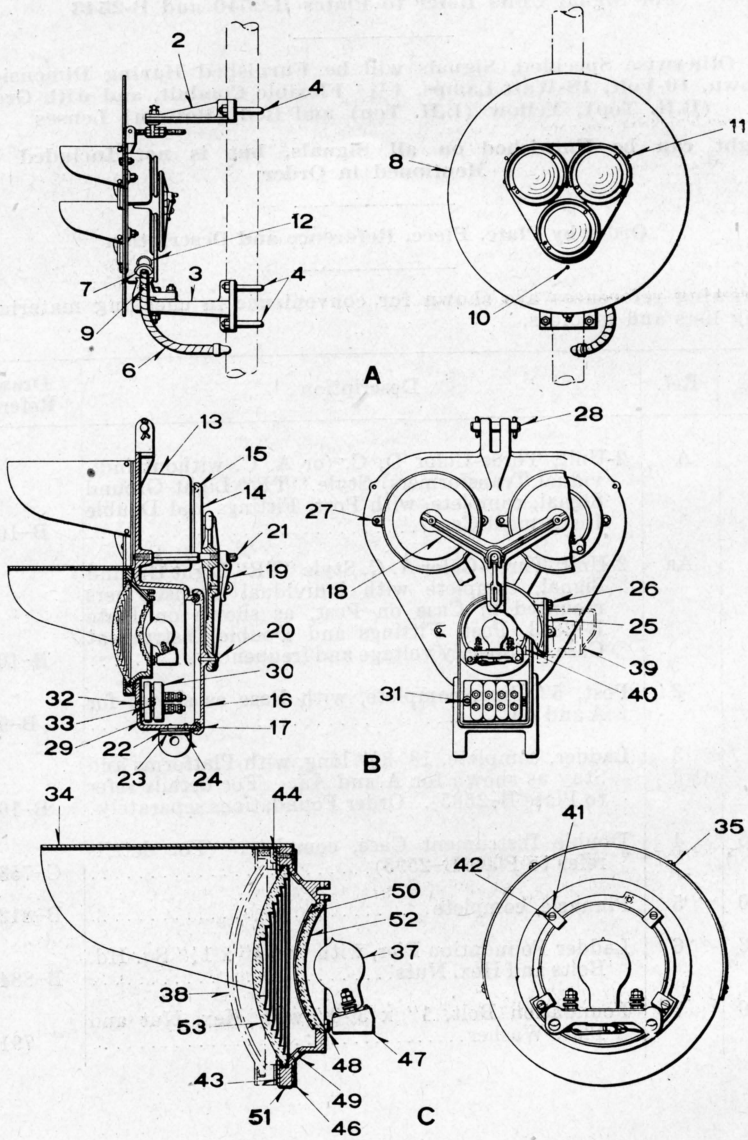


UNION SWITCH & SIGNAL CO.



THREE-COLOR STYLE "TR" SIGNAL UNITS AND LAMP UNITS

UNION SWITCH & SIGNAL CO.

THREE-COLOR STYLE "TR" SIGNAL UNITS AND LAMP UNITS

Unless Otherwise Specified, all Signal Units will be Furnished with Red (Bottom), Yellow (Upper Left) and Green (Upper Right) Lenses, 10-Volt, 18-Watt, Lamps and 1 1/4" Flexible Conduit

Order by Plate, Piece, Reference and Description

Drawing references are shown for convenience in checking material with shipping lists and invoices.

Piece	Ref.	Description	Drawing Reference			
122320	A	Three-Color D. C. (or A. C. without individual Transformers) Style "TR" Signal Unit, complete, with Backgrounds and mounting Fittings for attaching to 5" Pipe or Casing.....	B-10325-80			
122320	Aa	Three-Color D. C. (or A. C. without individual Transformers) Style "TR" Signal Unit, complete, with Backlight, Background and mounting Fittings for attaching to 5" Pipe or Casing.....	B-10325-80			
122320	Ab	Three-Color D. C. (or A. C. without individual Transformers) Style "TR" Signal Unit, complete, with Backgrounds and mounting Fittings for attaching to 6" Pipe.....	B-10325-80			
122320	Ac	Three-Color D. C. (or A. C. without individual Transformers) Style "TR" Signal Unit, complete, with Backlight, Background and mounting Fittings for attaching to 6" Pipe.....	B-10325-80			
Three-Color Style "TR" Light Signal Unit, Complete (Without Backgrounds and Mounting Fittings for Attaching to Post						
Piece	Ref.	Color of Lenses			Backlight	Drawing Reference
		L. H. Top	R. H. Top	Bottom		
122203	B	Yellow	Green	Red	without	C-8900-19
122314	Ba	Clear	Green	Red	without	C-8900-19
123737	Bb	Yellow	Blank	Red	without	C-8900-19
123738	Bc	Blank	Green	Red	without	C-8900-19
	Bd	Yellow	Green	Red	with	C-8900-

UNION SWITCH & SIGNAL CO.

THREE-COLOR STYLE "TR" SIGNAL UNITS AND LAMP UNITS
(Continued)

Unless Otherwise Specified, all Signal Units will be Furnished with Red (Bottom), Yellow (Upper Left) and Green (Upper Right) Lenses, 10-Volt, 18-Watt, Lamps and 1 1/4" Flexible Conduit

Order by Plate, Piece, Reference and Description

Drawing references are shown for convenience in checking material with shipping lists and invoices.

Piece	Ref.	Description	Drawing Reference
116592	C	Lamp Unit, complete, with Red Lens, (with Bulb)...	C-8901-35
116594	Ca	Lamp Unit, complete, with Green Lens, (with Bulb).....	C-8901-35
116593	Cb	Lamp Unit, complete, with Yellow Lens, (with Bulb).....	C-8901-35
122316	Cc	Lamp Unit, complete, with Clear Lens, (with Bulb).....	C-8901-35
118019	Cd	Lamp Unit, complete, with Red Lens, arranged for Backlight, (with Bulb).....	C-8901-35
80774	2	Bracket, upper adjusting, complete, for attaching Style "L", "R" and "TR" Signal Units to Pole....	C-8901-5
80773	3	Bracket, lower adjusting, complete, for attaching Style "L", "R" and "TR" Signal Units to Pole....	C-8901-6
43931	4	"U" Bolt, 3/4", with Hex. Nuts for attaching 2 and 3 to 5" Casing or Pipe.....	8782-66
44199	4a	"U" Bolt, 3/4", with Hex. Nuts, for attaching 2 and 3 to 6" Pipe.....	8782-69
54865	4b	"U" Bolt, 3/4", with Hex. Nuts for attaching 2 and 3 to 3" Pipe.....	8782-102
47106	5	Filler (not shown) used under "U" Bolt 4b when Signal Units are mounted on 3" Pipe Post.	
	6	Conduit, Double Strip Greenfield Flexible, 1 1/4" I. D. x 1 3/4" O. D., 2'-4" long, (will be provided unless otherwise specified.)	
	6a	Conduit Double Strip, Greenfield Flexible, 2" I. D. x 2 2/16" O. D., 3'-7" long.	
	7	Connector, 1 1/4" M. I. Panel Box.	
97577	7a	Connector, 2", complete for 6a.....	B-10342-17
122467	8	Circular Background, complete, with Braces.....	C-9011-4

UNION SWITCH & SIGNAL CO.

THREE-COLOR STYLE "TR" SIGNAL UNITS AND LAMP UNITS
(Continued)

Unless Otherwise Specified, all Signal Units will be Furnished with Red (Bottom), Yellow (Upper Left) and Green (Upper Right) Lenses, 10-Volt, 18-Watt, Lamps and 1 1/4" Flexible Conduit

Order by Plate, Piece, Reference and Description

Drawing references are shown for convenience in checking material with shipping lists and invoices.

Piece	Ref.	Description	Drawing Reference
80823	9	Pin, 3/4" x 10-9/16" with two 3/16" x 1-1/8" Cotters, (Cadmium Plated).....	B-10221-1
	10	Tap Bolt, 3/8" x 1" Hex. Hd. (Cadmium Plated) with plain Lock Washer, 10a and Plate Washer 10b for attaching Background 8 to Signal Unit.	
	10a	Lock Washer, 3/8" plain S. (5/32" x 3/32") for 10, 11, 26.	
	10b	Washer, 3/8" Std. Plate for 10.	
	11	Bolt, 3/8" x 1 1/2" Hex. Hd. (Cadmium Plated) with Hex. Nut 11a and Lock Washer 10a for bolting Background 8 to Case.	
534	11a	Hex. Nut for 11.....	8109-29
	12	1 1/4" Std. 45° Street Ell, Loricated.	
121408	13	Case for Style "TR" Light Signal Unit.....	C-9011-1
122204	13a	Case and Covers, complete for Style "TR" color Light Signal.....	C-8900-19
	14	Top Cover with Flax Packing 15, complete.....	C-9011-3
	15	Flax Packing, 3/8" Sq. 19" long for 14.	
	16	Bottom Cover with Flax Packing 17, complete.....	C-9011-3
	17	Flax Packing, 3/8" Sq. 2'-6" long for 16.	
122207	18	Door Clamp, complete with Staple.....	C-9011-2
72832	19	Hasp, complete.....	8299-66
	20	Rivet 1/4" x 1 1/2" Rd. Hd. I. for fastening 14 and 16 to 18.	
122070	21	Stud 5/8" x 8-7/16" for fastening Door Clamp 18 to Case.....	8071-167
913	22	Screen for Case.....	B-7318-3
911	23	Washer for 22.....	7826-40

UNION SWITCH & SIGNAL CO.

THREE-COLOR STYLE "TR" SIGNAL UNITS AND LAMP UNITS
(Continued)

Unless Otherwise Specified, all Signal Units will be Furnished with Red (Bottom), Yellow (Upper Left) and Green (Upper Right) Lenses, 10-Volt, 18-Watt, Lamps and 1 1/4" Flexible Conduit

Order by Plate, Piece, Reference and Description

Drawing references are shown for convenience in checking material with shipping lists and invoices.

Piece	Ref.	Description	Drawing Reference
	24	Rivet, $\frac{3}{16}$ " x $\frac{1}{2}$ " Rd. Hd. I. for fastening 22 and 23 to Case.	
122112	25	Backlight Cover.....	C-9011-3
	26	Tap Bolt, $\frac{1}{4}$ "-20 x $\frac{3}{4}$ " Hex. Hd. for 25.	
	27	Tap Bolt, $\frac{3}{8}$ " x 1- $\frac{3}{8}$ " Hex. Hd. (Cadmium Plated) with plain Lock Washer 10a.	
80726	28	Pin, $\frac{5}{8}$ " x 3- $\frac{1}{4}$ " with two $\frac{3}{16}$ " x 1- $\frac{1}{8}$ " Cotters, (Cadmium Plated).....	B-10216-1
122071	29	Terminal Board.....	9968-647
114167	30	Terminal Block, complete.....	9968-629
	31	Wood Screw No. 12 x 1- $\frac{1}{4}$ " Rd. Hd. S. (Cadmium Plated) for attaching 30 to 29.	
	32	Machine Screw No. 14-24 x 1- $\frac{1}{4}$ " Fil. Hd. S. (Cadmium Plated) for attaching 29 to Case.	
84	33	Washer for 32.....	7828-6
65898	34	Hood.....	C-8842-15
	35	Machine Screw No. 10-30 x $\frac{1}{4}$ " Rd. Hd. (Cadmium Plated) for 34.	
95407	36	Sheet Steel Disc used for blanking out lights, (not shown).....	C-8842-15
	36a	Machine Screw No. 10-30 x $\frac{1}{4}$ " Rd. Hd. S. for 36.	
116447	37	Electric Lamp, 10-volt, 18-watt.....	B-12409-16
90897	38	Deflecting Prism, complete, (10° spread).....	C-8901-8
90898	38a	Deflecting Prism, complete, (20° spread).....	C-8901-8
	39	Backlight, complete, with Reflector and Glass Shield.....	

UNION SWITCH & SIGNAL CO.

THREE-COLOR STYLE "TR" SIGNAL UNITS AND LAMP UNITS
(Continued)

Unless Otherwise Specified, all Signal Units will be Furnished with Red (Bottom), Yellow (Upper Left) and Green (Upper Right) Lenses, 10-Volt, 18-Watt, Lamps and 1 1/4" Flexible Conduit

Order by Plate, Piece, Reference and Description

Drawing references are shown for convenience in checking material with shipping lists and invoices.

Piece	Ref.	Description	Drawing Reference
	40	<p>Backlight Lens Support, complete, with Lens and Screws for attaching to Lamp Unit.....</p> <p>"The Lamp Unit, Ref. C shown is assembled by trained workmen with specially designed equipment which can be handled satisfactorily only at the factory. This factory adjustment makes possible the maximum efficiency and uniformity obtained with these signals, and hence the detail parts involved in the assembly are not listed separately. Units in need of repairs should be sent to Swissvale.</p> <p>Do not change either the outer or the inner Lens in any Unit without sending to the factory for adjustment."</p>	