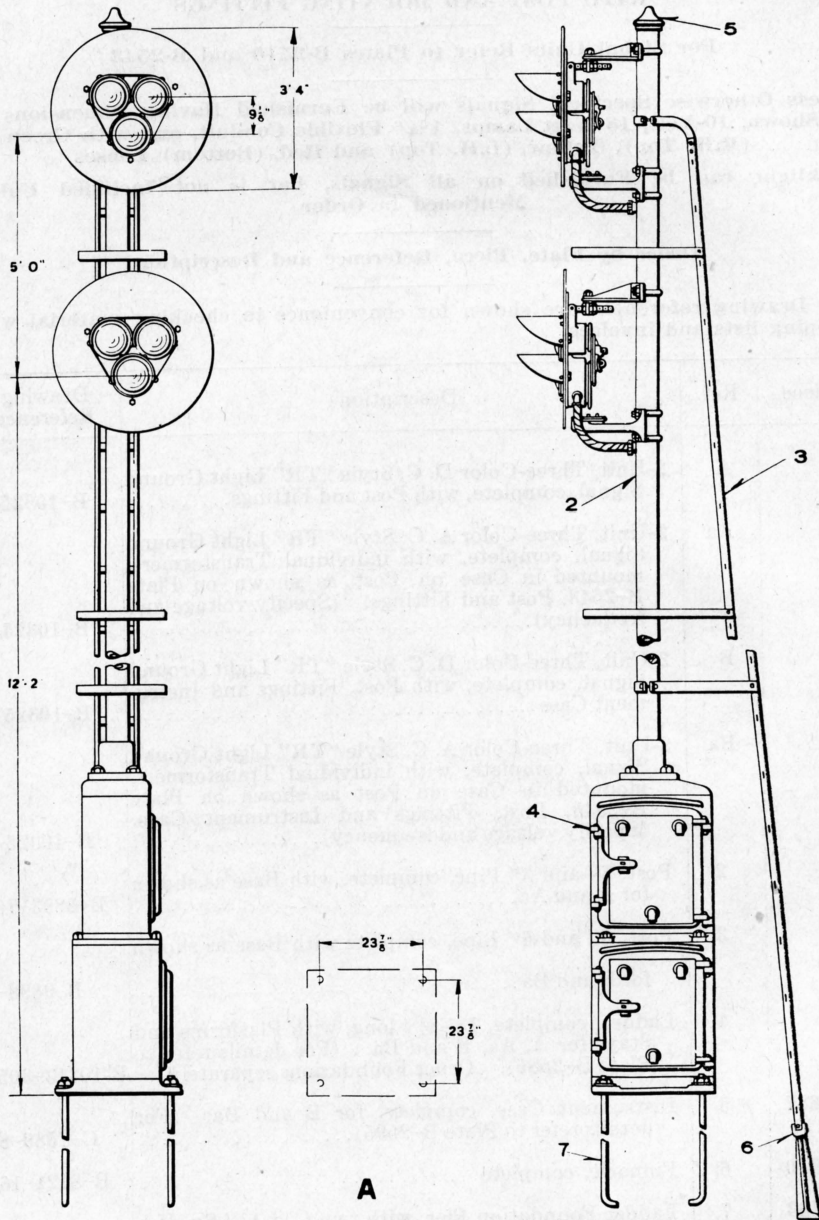


UNION SWITCH & SIGNAL CO.



2-UNIT, THREE-COLOR STYLE "TR" LIGHT GROUND SIGNAL, COMPLETE WITH POST, DOUBLE INSTRUMENT CASE AND FITTINGS

UNION SWITCH & SIGNAL CO.

2-UNIT, THREE-COLOR, STYLE "TR" LIGHT GROUND SIGNAL, COMPLETE WITH POST, DOUBLE INSTRUMENT CASE AND FITTINGS

For Signal Units Refer to Plates B-2540 and B-2543

Unless Otherwise Specified, Signals will be Furnished Having Dimensions as Shown, 10-Volt, 18-Watt Lamps, 1 1/4" Flexible Conduit, and with Green (R.H. Top), Yellow (L.H. Top) and Red (Bottom) Lenses

Backlight can be Furnished on all Signals, but is not Included Unless Mentioned in Order

Order by Plate, Piece, Reference and Description

Drawing references are shown for convenience in checking material with shipping lists and invoices.

Piece	Ref.	Description	Drawing Reference
	A	2-Unit, Three-Color D. C. (or A. C. without individual Transformers) Style "TR" Light Ground Signal, complete, with Post, Fittings and Double Instrument Case.....	B-10325-
	Aa	2-Unit, Three-Color A. C. Style "TR" Light Ground Signal, complete with individual Transformers mounted in Case on Post, as shown on Plate B-2543, Post, Fittings and Double Instrument Case. (Specify voltage and frequency.....	B-10325-
	2	Post, 5" Pipe, complete, with Base as shown for A and Aa.....	B-9893-
	3	Ladder, complete, 18'-8 1/2" long, with Platforms and Stay as shown for A and Aa. (For details refer to Plate B-2585). Order Foundations separately.	B-10313-
124495	4	Double Instrument Case, complete. (For details refer to Plate B-2595).....	C-7589-10
69910	5	Pinnacle, complete.....	B-8121-16
62563	6	Ladder Foundation Pier, with two 1/2" x 1 1/4" Sq. Hd. Bolts and Hex. Nuts.....	B-8848-10
10276	7	Foundation Bolt, 1" x 3'-0" with Hex. Nut and Plate Washer.....	7913-54