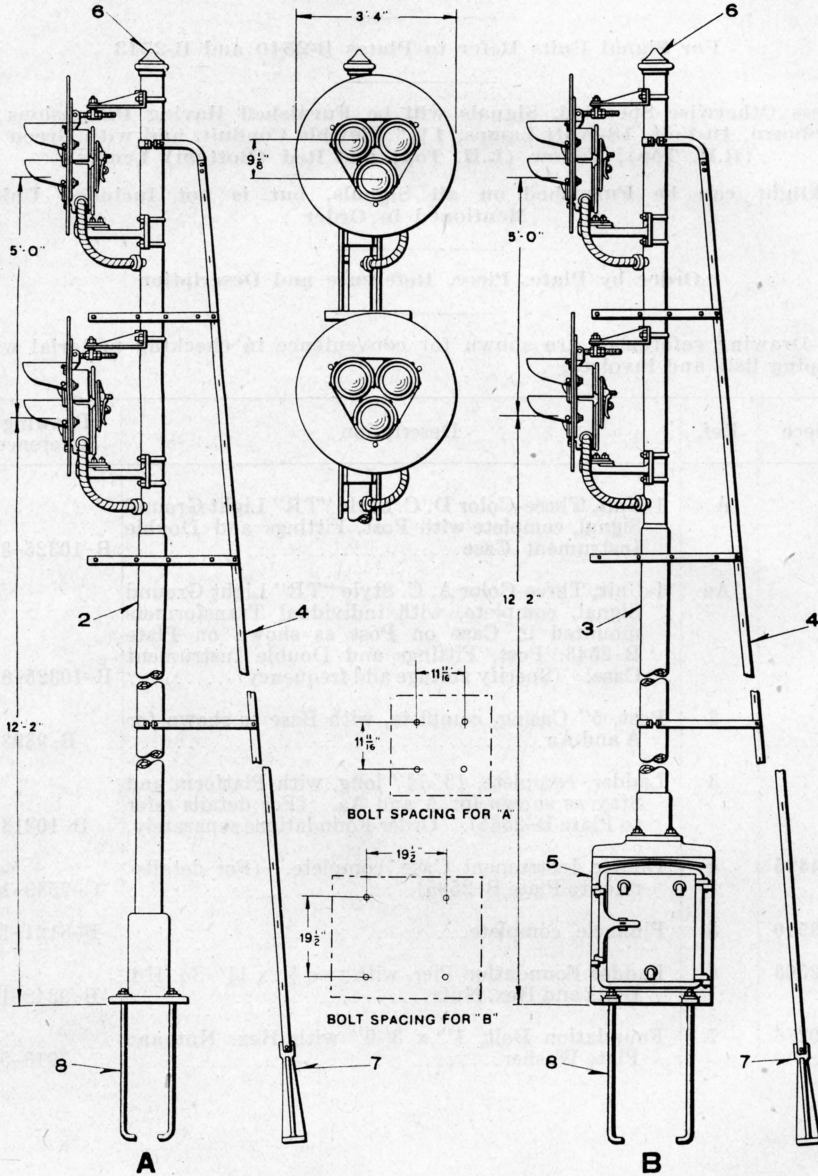


UNION SWITCH & SIGNAL CO.



2-UNIT, THREE-COLOR STYLE "TR" LIGHT GROUND SIGNAL, COMPLETE WITH POST AND FITTINGS

UNION SWITCH & SIGNAL CO.

2-UNIT, THREE-COLOR, STYLE "TR" LIGHT GROUND SIGNAL, COMPLETE WITH POST AND MOUNTING FITTINGS

For Signal Units Refer to Plates B-2540 and B-2543

Unless Otherwise Specified, Signals will be Furnished Having Dimensions as Shown, 10-Volt, 18-Watt Lamps, 1 1/4" Flexible Conduit, and with Green (R.H. Top), Yellow (L.H. Top) and Red (Bottom) Lenses

Backlight can be Furnished on all Signals, but is not Included Unless Mentioned in Order

Order by Plate, Piece, Reference and Description

Drawing references are shown for convenience in checking material with shipping lists and invoices.

Piece	Ref.	Description	Drawing Reference
	A	2-Unit, Three-Color D. C. Style "TR" Light Ground Signal, complete, with Post and Fittings.....	B-10325-
	Aa	2-Unit, Three-Color A. C. Style "TR" Light Ground Signal, complete, with individual Transformers, mounted in Case on Post as shown on Plate B-2543, Post and Fittings. (Specify voltage and frequency).....	B-10325-
	B	2-Unit, Three-Color D. C. Style "TR" Light Ground Signal, complete, with Post, Fittings and Instrument Case.....	B-10325-
	Ba	2-Unit, Three-Color A. C. Style "TR" Light Ground Signal, complete, with individual Transformers, mounted in Case on Post as shown on Plate B-2543, Post, Fittings and Instrument Case. (Specify voltage and frequency).....	B-10325-
	2	Post, 5" and 6" Pipe, complete, with Base as shown for A and Aa.....	B-9893-76
	3	Post, 5" and 6" Pipe, complete with Base as shown for B and Ba.....	B-9893-
	4	Ladder, complete, 18'-8 1/2" long, with Platforms and Stays for A, Aa, B and Ba. (For details refer to Plate B-2585). Order Foundations separately...	B-10313-305
68687	5	Instrument Case, complete, for B and Ba. (For details refer to Plate B-2595).....	C-7589-6
69910	6	Pinnacle, complete.....	B-8121-16
62563	7	Ladder Foundation Pier, with two 1/2" x 1 1/4" Sq. Hd. Bolts and Hex. Nuts.....	B-8848-10
10276	8	Foundation Bolt, 1" x 3'-0" with Hex. Nut and Plate Washer.....	7913-54