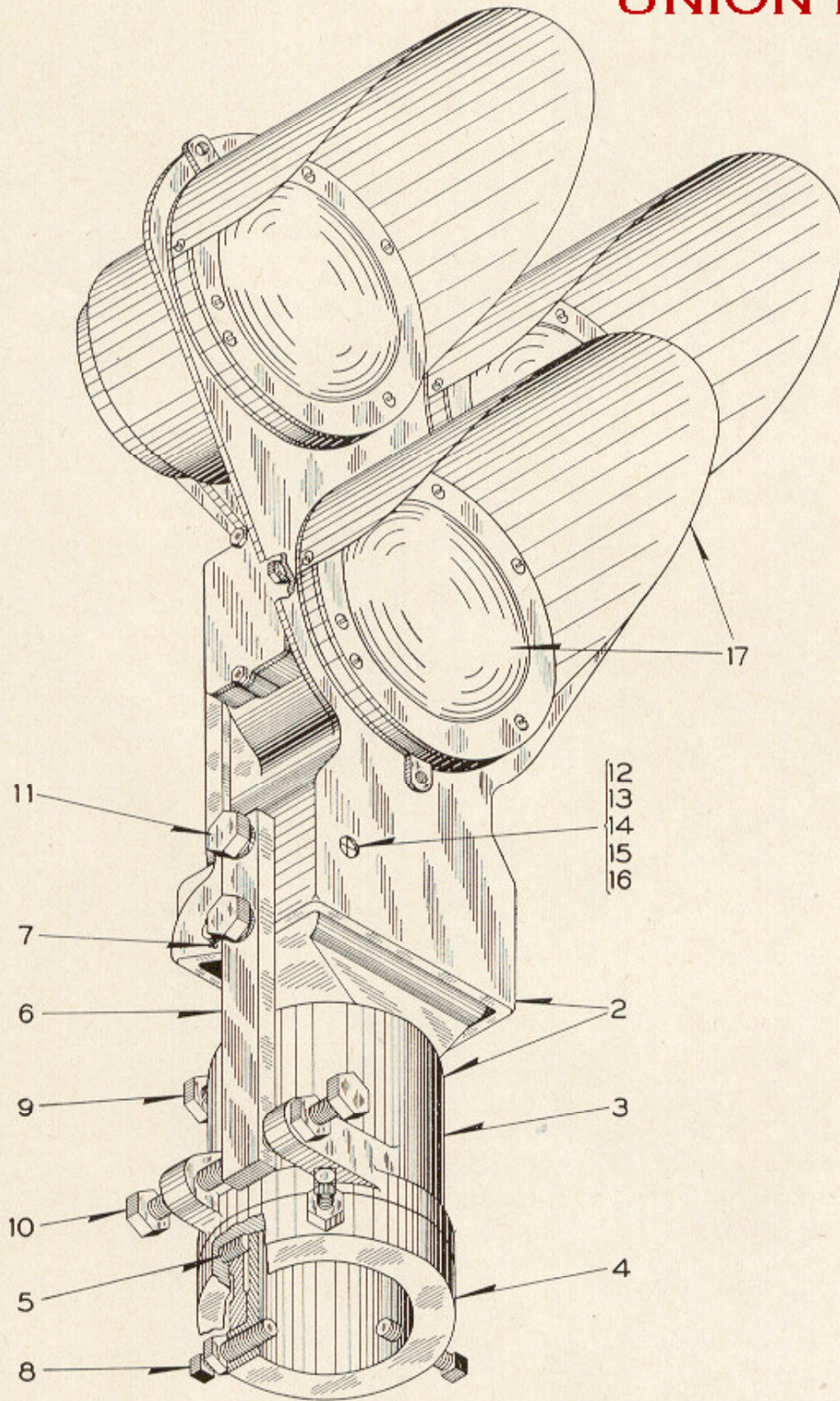


ZCG UTILITY SCRAP
UNION MO 63084



A

FOR ALL OTHER DETAILS
REFER TO PLATE B-2524

Three-Color Style "TP-5" Triangular Signal
Unit (Without Background)

Three-Color Style "TP-5" Triangular Signal Unit (Without Background)

Unless otherwise specified all Signal Units will be furnished with Green L.H. Top, Yellow R.H. Top and Red Bottom Lenses.

Orders should specify Lamp Bulbs desired by referring to Plate B-2571.

Individual Transformers or "L-10" Relays, when required, must be mounted in a separate case and should be ordered from Plate B-2590.

All "TP-5" Signal Units are equipped with Built-in Sighting Device.

For Signal Units with Backgrounds refer to Plate B-2517.

Order by Plate, Piece, Reference and Abbreviated Description Given in Heavy Face Type Only

Three-Color Style "TP-5" Signal Unit Ref. Plate B-2526 (Socket Suitable for Mounting on 5" Pipe or Casing) (Without Individual Transformers) with Lamp Bulbs (Orders should Specify Lamp Bulbs Desired by Referring to Plate B-2571).							
Piece	Ref.	L.H. Top Light	R.H. Top Light	Bottom Light	Backlight	Remarks	Drawing Reference
	A	Green	Yellow	Red	Without		C-8900-79
	Aa	Green	Yellow	Red	With (On Bottom Lamp Unit)		C-8900-79
Piece	Ref.	Description					Drawing Reference
166222	2	Case, Doors and Sockets for 3-Color Style "TP-5" Light Signal Unit for 5" Pipe or Casing (with Built-in Sight)					C-8900-77
166223	2a	Case Only, for Ref. 2					C-9011-17
166224	3	Socket					C-8901-106
166218	4	Pipe Socket for 5" Pipe or Casing					C-8901-104
	5	Set Screw, 5/8"x1 1/2" Sq. Hd. Flat Pt. I. with 5/8" Hex. Jam Nut (Cad. Pl.).					
166289	6	Adjusting Bar					9999-774
166288	7	Pin, 3/4"x9 1/4", with two 3/16"x1 1/8" S. Cotters (Tin Pl.)					B-10221-1
	8	Set Screw, 5/8"x2 1/4" Sq. Hd. Cup Pt. I. with 5/8" Hex. Jam Nut (Cad. Pl.).					
	9	Tap Bolt, 5/8"-11x2 3/4" Hex. Hd. (Cad. Pl.).					
	10	Tap Bolt, 5/8"-11x3 1/4" Hex. Hd. (Cad. Pl.) with 5/8" Hex. Jam Nut (Cad. Pl.).					
	11	Cap Screw, 5/8"-11x1 1/2" Hex. Hd. (Cad. Pl.) with 5/8" Pl. S. Lock Washer (1 7/8"x 3/16") (Cad. Pl.).					

Three-Color Style "TP-5" Triangular Signal Unit (Without Background)

ZCG UTILITY SCRAP
UNION MO 63084

(Continued)

Order by Plate, Piece, Reference and Abbreviated Description Given in Heavy Face Type Only

Piece	Ref.	Description	Drawing Reference
152811	12	Sight Plate.....	11893-436
410564	13	Clamp Plate.	
	14	Machine Screw, No. 8-36x $\frac{1}{4}$ " Rd. Hd. Br. (N.P.)	
166316	15	Sight Complete.....	8350-792
46657	16	Dowel.....	8097-593
	17	Lamp Unit for Style "TP-5" Light Signal (When ordering refer to Plate B-2531).....	C-8901-35
For all other details refer to Plate B-2524.			