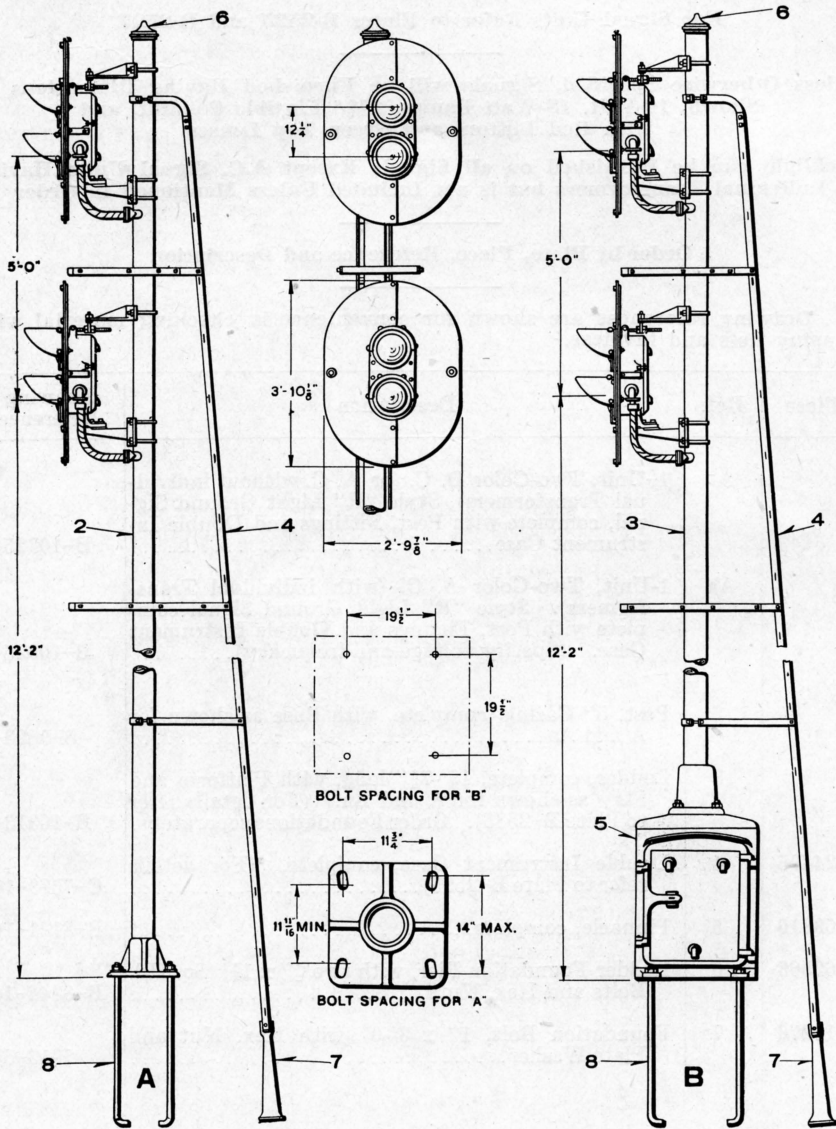


UNION SWITCH & SIGNAL CO.



2-UNIT, TWO-COLOR STYLE "R" LIGHT GROUND SIGNAL, COMPLETE WITH POST AND FITTINGS

UNION SWITCH & SIGNAL CO.

2-UNIT, TWO-COLOR, STYLE "R" LIGHT GROUND SIGNAL, COMPLETE WITH POST AND FITTINGS

For Signal Units Refer to Plates B-2525 and B-2527

Unless Otherwise Specified, Signals will be Furnished Having Dimensions as Shown, 10-Volt, 18-Watt Lamps, 1 1/4" Flexible Conduit, and with Red Bottom and Green Top Lenses

Backlight can be Furnished on all Signals Except A.C. Signal Units Having Individual Transformers but is not Included Unless Mentioned in Order

Order by Plate, Piece, Reference and Description

Drawing references are shown for convenience in checking material with shipping lists and invoices.

Piece	Ref.	Description	Drawing Reference
	A	2-Unit, Two-Color D. C. (or A. C. without individual Transformers) Style "R" Light Ground Signal, complete with Post and Fittings.....	B-10325-52
	Aa	2-Unit, Two-Color A. C. (with individual Transformers) Style "R" Light Ground Signal, complete with Post and Fittings. (Specify voltage and frequency).....	B-10325-52
	B	2-Unit, Two-Color D. C. (or A. C. without individual Transformers) Style "R" Light Ground Signal, complete with Post, Fittings and Instrument Case.....	B-10325-
	Ba	2-Unit, Two-Color A. C. (with individual Transformers) Style "R" Light Ground Signal, complete with Post, Fittings and Instrument Case. (Specify voltage and frequency).....	B-10325-
	2	Post, 5" Pipe, complete with Base as shown for A and Aa.....	B-9893-71
	3	Post, 5" Pipe complete with Base as shown for B and Ba.....	B-9893-
	4	Ladder, complete, 19'-10" long with Platform and Stays for A, Aa, B and Ba. (For details refer to Plate B-2585). Order Foundations separately..	B-10313-269
68687	5	Instrument Case, complete for B and Ba. (For details refer to Plate B-2595).....	C-7589-6
69910	6	Pinnacle, complete.....	B-8121-16
62563	7	Ladder Foundation Pier with two 1/2" x 1 1/4" Sq. Hd. Bolts and Hex. Nuts.....	B-8848-10
10276	8	Foundation Bolt, 1" x 3'-0" with Hex. Nut and Plate Washer.....	7913-54