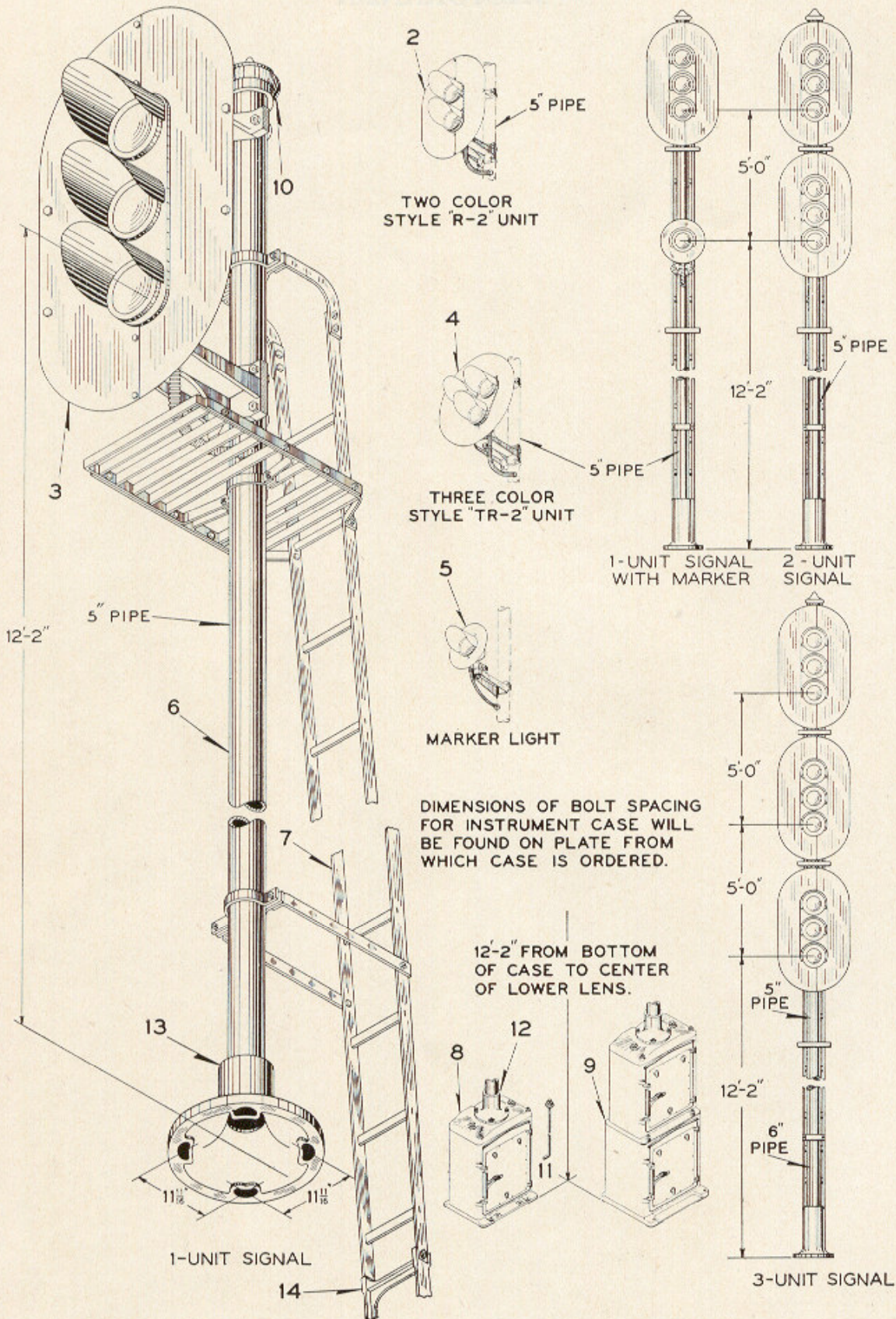


**ZCG UTILITY SCRAP  
UNION MO 63084**



**Styles "R-2" and "TR-2" Color Light  
Ground Signals**



## Styles "R-2" and "TR-2" Color Light Ground Signals Complete

When ordering a complete Signal refer to paragraphs 40 to 43 of Plate B-2500.

Order by Plate, Piece, Reference and Abbreviated  
Description Given in Heavy Face Type Only

Parts	Piece	Ref.	Alternatives	Remarks	Detail Plates or Drawing Reference
Signal Units		2	2-Color Style "R-2"		B-2517
		3	3-Color Style "R-2"		
		4	3-Color Style "TR-2" Triangular		
Marker Light		5	1-Color Style "R-2"		B-2514
		5a	1-Color Style "D" C.I. Semaphore Lamp		
		5b	1-Color Style "HC-33"		
Pipe Post with Base Casting		* 6	For 1-Unit Signal		
		* 6a	For 2-Unit Signal		
		* 6b	For 3-Unit Signal		
Ladder		* 7	For 1-Unit Signal		B-2586
		* 7a	For 2-Unit Signal		
		* 7b	For 3-Unit Signal		
Instrument Case		8	Single Case		L-1135 to L-1160
		9	Double Case		
Pinnacle	150818	10		For 5" Pipe or Casing	B-8121-17
Foundation Bolts	10276	11		1"x3'-0" with Hex. Nut and Washer	7913-54
Base		12	For Instrument Case Mounting		B-2580 and B-2581
		13	For Ground Mounting		
Ladder Foundation Pier	181370	14		With Bolts for attaching Ladder	B-2586
Lamp Bulbs		15		Not shown	B-2571

\*When separate Pipe Posts and Ladders are ordered, orders should be accompanied with the same information as required when ordering complete signals in order that Posts and Ladders with correct drilling and length can be supplied.