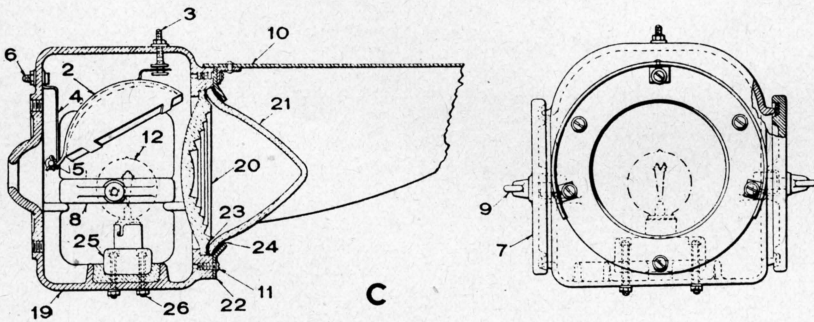
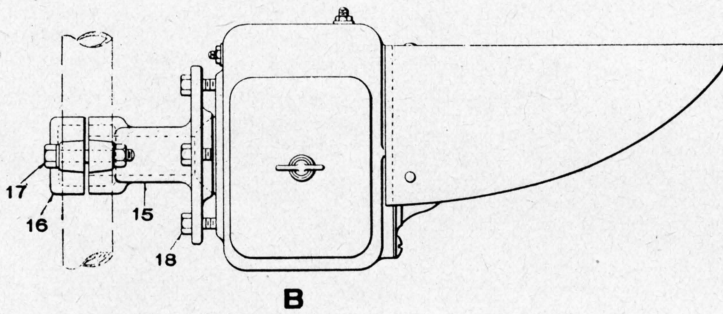
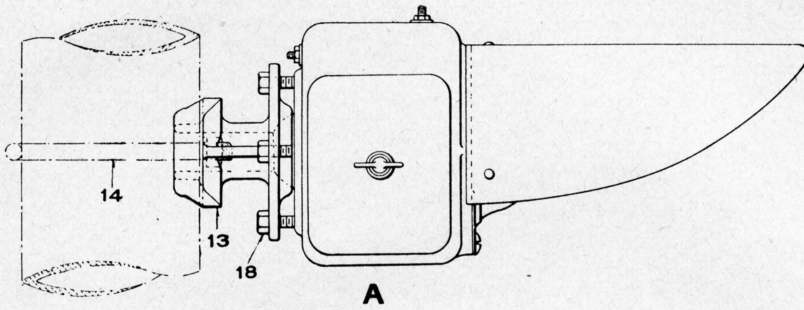


UNION SWITCH & SIGNAL CO.



LAMP UNIT ASSEMBLIES

UNION SWITCH & SIGNAL CO.

LAMP UNIT ASSEMBLIES AND DETAILS FOR POSITION LIGHT SIGNAL

On all orders subsequent to May 1927 Lamp Units Plate B-2436 have been supplied.

Order by Plate, Piece, Reference and Abbreviated Description Given in Heavy Face Type Only.

| Piece | Ref. | Description | Drawing Reference |
|--------|------|--|-------------------|
| 97923 | A | Marker Light (Lamp) Unit for Ground Signal, complete for 5" Pipe, with U-Bolt and Nuts as shown.. | C-8965-3 |
| 95813 | Aa | Marker Light (Lamp) Unit for Ground Signal, complete for 5" Pipe, without U-Bolt and Nuts..... | C-8965-3 |
| 143813 | Ab | Marker Light (Lamp) Unit for Ground Signal, complete for 6" Pipe, with U-Bolt and Nuts..... | C-8965-3 |
| 95815 | B | Lamp Unit, as shown for Assemblies Plate B-2430, except Pivot Lamp and for Bridge Marker Lamp when applied to 1 1/4" Pipe..... | C-8965-3 |
| | C | Lamp Unit, as shown without Electric Lamp Ref.12 | C-8965-2 |
| 96040 | Ca | Lamp Unit, Ref. A without Lens, Lens Ring and Hood (Including Refs. 2 to 11, inclusive)..... | C-8965-2 |
| 83249 | 2 | Reflector (Including Refs. 2a and 2b)..... | C-8688-51 |
| 83247 | 2a | Reflector only for Ref. 2..... | C-8688-2 |
| 83248 | 2b | Reflector Holder..... | C-8688-51 |
| 65199 | 3 | Screw for vertical adjustment of Ref. 2..... | 8098-1250 |
| 29103 | 3a | Nut for Ref. 3..... | 8109-194 |
| 939 | 3b | Washer for Ref. 3..... | 7828-7 |
| 95823 | 4 | Bracket for lateral adjustment of Ref. 2..... | C-8964-5 |
| 95836 | 5 | Pin for fastening Ref. 2 to Ref. 4..... | 8097-108 |
| | 5a | Cotter, 1/16" x 3/8" S. for Ref. 5. | |
| | 6 | Bolt, 1/4" x 3/4" Sq. Hd. S. with 1/4" Hex. Nut and 1/4" Plate Washer for Ref. 4. | |

UNION SWITCH & SIGNAL CO.

LAMP UNIT ASSEMBLIES AND DETAILS FOR POSITION LIGHT SIGNAL

(Continued)

Order by Plate, Piece, Reference and Abbreviated Description Given in Heavy Face Type Only.

| Piece | Ref. | Description | Drawing Reference |
|--------|------|--|-------------------|
| | 7 | Door, with Gasket Ref. 7a..... | C-8964-4 |
| 80351 | 7a | Gasket for Ref. 7..... | 8078-1248 |
| 94316 | 8 | Yoke to fasten Ref. 7 to case..... | C-8964-4 |
| | 9 | Thumb Screw, $\frac{5}{16}$ "-18 M. I., 1" long. | |
| 95825 | 10 | Hood..... | C-8964-5 |
| | 11 | Machine Screw, No. 10-30x $\frac{3}{4}$ " Rd. Hd. S. (Cad. Pl.) for securing Ref. 10 to case. | |
| 38710 | 11a | Washer for Ref. 11..... | 7826-98 |
| 113698 | 12 | Electric Lamp, 12 V. 7.5 watt..... | B-12409-14 |
| | | Detail references 13 to 18 inclusive below, also shown on Plate B-2430. | |
| 95812 | 13 | Lamp Support, with Gasket Ref. Ba for clamping on 5" Pipe..... | C-8964-8 |
| 97619 | 13a | Gasket for Ref. 13..... | 8078-1042 |
| 46567 | 14 | U-Bolt, $\frac{1}{2}$ " with $\frac{1}{2}$ " Hex. Nut and $\frac{1}{2}$ " Lock Washer ($\frac{3}{16}$ "x $\frac{3}{32}$ ") for securing Ref. 13 to 5" Pole..... | 8782-77 |
| 94334 | 15 | Lamp Support for clamping on 1 $\frac{1}{4}$ " Pipe..... | C-8964-3 |
| 94336 | 16 | Cap for Ref. 15..... | C-8964-3 |
| | 17 | Bolt, $\frac{3}{8}$ "x2 $\frac{1}{2}$ " Sq. Hd. S. with $\frac{3}{8}$ " Hex. Nut and $\frac{3}{8}$ " Lock Washer ($\frac{5}{32}$ "x $\frac{3}{32}$ "). | |
| | 18 | Tap Bolt, $\frac{3}{8}$ "x1 $\frac{1}{4}$ " Hex. Hd. S. for fastening Ref. C to Refs. 13 or 15 and for securing adjustment of the Lamp. | |

UNION SWITCH & SIGNAL CO.

LAMP UNIT ASSEMBLIES AND DETAILS FOR POSITION LIGHT SIGNAL
(Continued)

Order by Plate, Piece, Reference and Abbreviated Description Given in Heavy Face Type Only.

| Piece | Ref. | Description | Drawing Reference |
|--------|------|---|-------------------|
| | | The following material, when ordered separately, requires specially designed aligning equipment and trained workmen to assemble properly. | |
| | 19 | Lamp Unit Case only | C-8964-2 |
| 64541 | 20 | Lens, 5 $\frac{3}{8}$ " | B-8276-29 |
| 64512 | 21 | Conical Cover Glass | 8468-29 |
| 95839 | 22 | Lens Ring | 7436-120 |
| 111979 | 23 | Gasket between Refs. 20 and 21 | 8078-684 |
| 40822 | 24 | Gasket between Refs. 21 and 22 | 8078-684 |
| 95844 | 25 | Lamp Base, complete | C-8665-3 |
| 128725 | 25a | Contact Spring for increasing center contact pressure on Lamp | 8124-213 |
| | 26 | Machine Screw, No. 6-40x1 $\frac{5}{16}$ " Fil. Hd. Br. | |
| 1505 | 26a | Nut for Ref. 26 | 8109-11 |
| 20686 | 26b | Washer for Ref. 26 | 7828-108 |