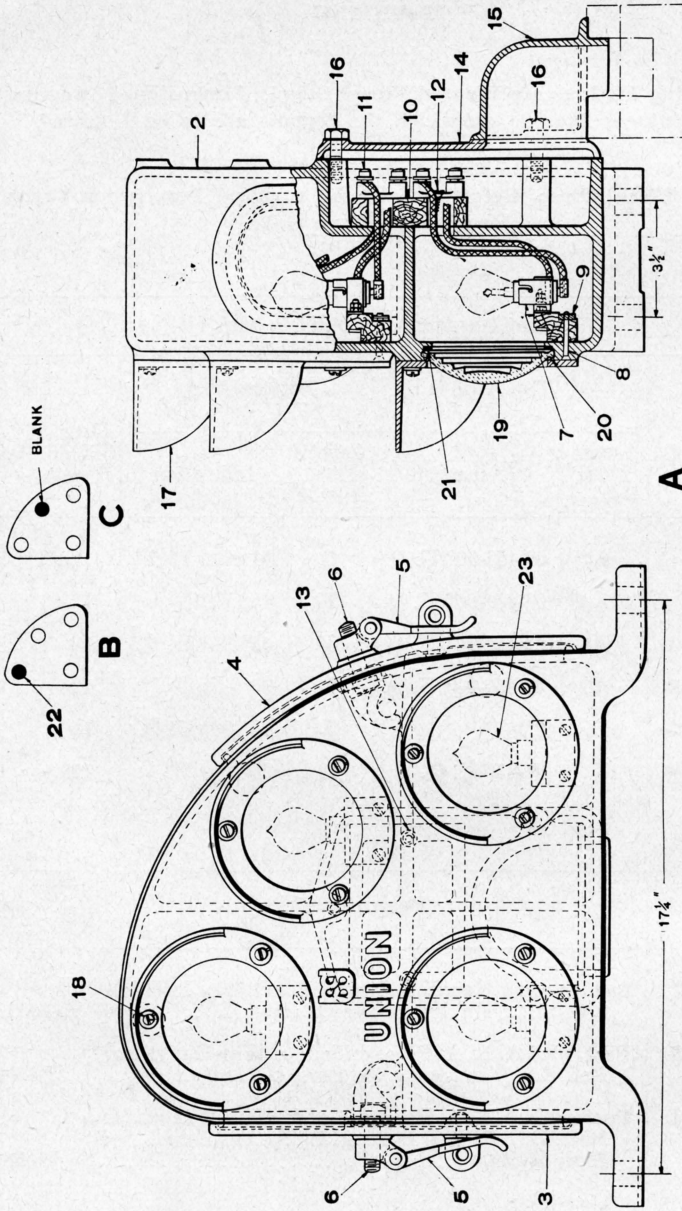


UNION SWITCH & SIGNAL CO.



POSITION LIGHT DWARF SIGNAL

UNION SWITCH & SIGNAL CO.

POSITION LIGHT DWARF SIGNAL

Order by Plate, Piece, Reference and Abbreviated Description Given in Heavy Face Type Only.

Piece	Ref.	Description	Drawing Reference
94188	A	Signal, complete for 0°-45°-90° R. H. U. Q. as shown.	C-8801-2
95453	B	Signal, complete for 0°-45° R. H. U. Q.....	C-8801-2
118375	C	Signal, complete for 0°-90° R. H. U. Q. and 0°-45° R. H. L. Q.....	C-8801-2
94146	2	Signal Case only for Refs. A, B and C.....	C-8963-1
95464	3	Door, L. H., for Ref. 2 (includes Refs. 3a and 3b)..	C-8963-2
64996	3a	Staple for Refs. 3 and 4.....	8191-1
94070	3b	Gasket for Ref. 3.....	8078-1248
95465	4	Door R. H., for Ref. 2 (includes 3a and 4a).....	C-8963-2
94071	4a	Gasket for Ref. 4.....	8078-1248
72832	5	Hasp, with Nut and Rivet for Refs. 3 and 4.....	8299-66
94151	6	Hook Bolt for Refs. 3 and 4.....	C-8963-3
94172	7	Terminal Board, with Bayonet Socket.....	9968-578
94152	7a	Terminal Board only.....	9968-578
94185	7b	Bayonet Socket.....	C-8665-2
	7c	Terminal Post, for Wire Connection (includes Refs. 7e, 7g and 7h).....	12451
	7d	Terminal Post, (for Clamping Socket, includes Refs. 7f and 7g).....	12451
60526	7e	Terminal Post only for Ref. 7c.....	8094-1039
84779	7f	Terminal Post only for Ref. 7d.....	8094-1039

UNION SWITCH & SIGNAL CO.

POSITION LIGHT DWARF SIGNAL

(Continued)

Order by Plate, Piece, Reference and Abbreviated Description Given in Heavy Face Type Only.

Piece	Ref.	Description	Drawing Reference
26942	7g	Nut for Refs. 7e and 7d.....	8109-184
44618	7h	Washer for Ref. 7c.....	7828-184
	8	Machine Screw No. 10-30x1½" Flat Hd. S. for fastening Ref. 7 to Ref. 2	
94154	9	Clamping Plate.....	9999-103
117617	10	Terminal Board (includes 1-10a, 4-11a, 1-11 and 5-12).....	9968-635
117618	10a	Terminal Board only.....	9968-635
95756	11	Terminal Connector (4 way).....	8064-531
95794	11a	Terminal Connector (2 way).....	8064-501
94313	11b	Terminal Connector only for Ref. 11.....	8064-531
117288	11c	Terminal Connector only for Ref. 11a.....	8064-501
	11d	Machine Screw, No. 14-24x¾" Fil. Hd. Br. for Refs. 11 and 11a.	
	11e	Machine Screw, No. 14-24x½" Fil. Hd. Br. for Refs. 11 and 11a.	
84	11f	Washer for Refs. 11d and 11e.....	7828-6
	12	Wood Screw, No. 8x¾" Rd. Hd. S. (Cad. Pl.) for Refs. 11 and 11a.	
	13	Machine Screw, No. 14-24x1¼" Fil. Hd. S. for fastening Refs. 10 and 10a to Ref. 2.	
21014	13a	Washer for Ref. 13.....	7826-66

UNION SWITCH & SIGNAL CO.

POSITION LIGHT DWARF SIGNAL

(Continued)

Order by Plate, Piece, Reference and Abbreviated Description Given in Heavy Face Type Only.

Piece	Ref.	Description	Drawing Reference
94149	14	Back Cover Plate.....	C-8963-3
63934	15	Trunking Cap.....	C-8042-10
	16	Tap Bolt, $\frac{3}{8}$ "-16x1 $\frac{1}{4}$ " Hex. Hd. S. for fastening Refs. 14 and 15 to Ref. 2.	
94150	17	Hood.....	C-8963-3
	18	Machine Screw, No. 14-24x $\frac{3}{4}$ " Fil. Hd. S. for Ref. 17	
	18a	Lock Washer, $\frac{1}{4}$ " Plain S. for Ref.18 ( $\frac{1}{8}$ "x $\frac{1}{16}$ ").	
94080	19	Lens, 4" Diam. (Clear).....	B-8276-12
94153	20	Retaining Ring.....	7770-390
95469	21	Gasket between Refs. 2 and 19.....	8078-1268
94139	22	Sheet Steel Disc (when no Lamp is used).....	7436-119
	22a	Machine Screw, No. 14-24x $\frac{1}{2}$ " Fil. Hd. S. for Ref. 22.	
113706	23	Electric Lamp, 6-8 Volts, 21 C. P.....	B-12409-12