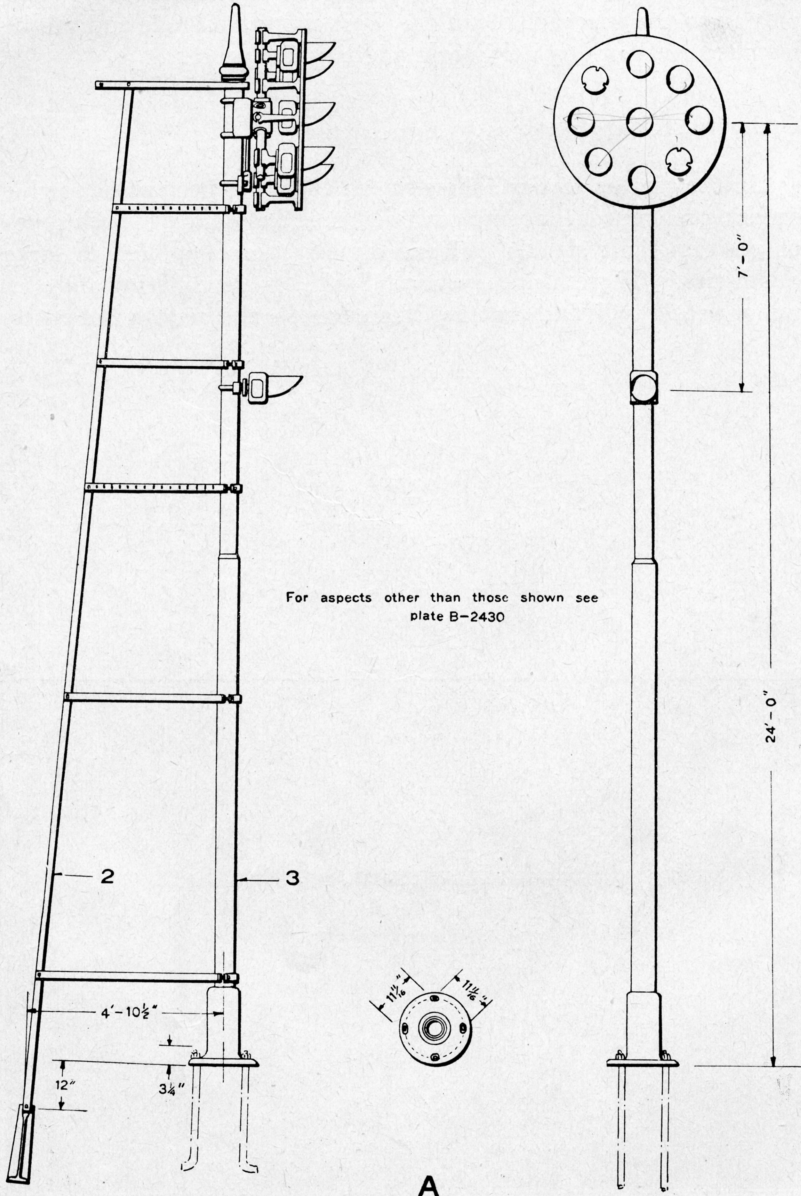


UNION SWITCH & SIGNAL CO.



ONE ARM POSITION LIGHT GROUND SIGNAL

UNION SWITCH & SIGNAL CO.

ONE ARM POSITION GROUND SIGNALS, COMPLETE ASSEMBLIES

Order by Plate, Piece, Reference and Abbreviated Description Given in Heavy Face Type Only.

One Arm Assemblies, Complete with Fittings. Dwg. C-8966—Sh. 7					
Piece	Reference	Aspect Plate B-2430	Indication	Marker Light	Remarks
116584	A	A	0°-45°-90° U. Q.	With	
117110	A-1	A	0°-45°-90° U. Q.	Without	
117903	A-2	B	0°-45°-90° L. Q.	Without	
118390	A-3	C	45°-90° U. Q. and 45° L. Q.	With	
118391	A-4	D	0°-45° U. Q.	With	
118393	A-5	E	45° U. Q. and 45° L. Q.	With	

Piece	Ref.	Description	Drawing Reference
116619	2	Ladder, with two Platforms, Handrails and Stays as shown for Refs. A, A-3, A-4 and A-5. Order foundations separately. (For details, see Plate B-2446)	B-10313-280
	2a	Ladder, with one Platform, Handrail and Stays for Refs. A-1 and A-2. Order foundations separately. (For details, see Plate B-2446).....	B-10313
116587	3	Post, with Base, for Refs. A, A-3, A-4 and A-5. (For details, see Plate B-2443)	B-9893-80
116587	3	Post, with Base, for Refs. A, A-3, A-4 and A-5. (For details, see Plate B-2443)	B-9893-80
117111	3a	Post, with A. R. A. Base for Refs. A-1 and A-2. (For details, see Plate B-2443)	B-9893-80