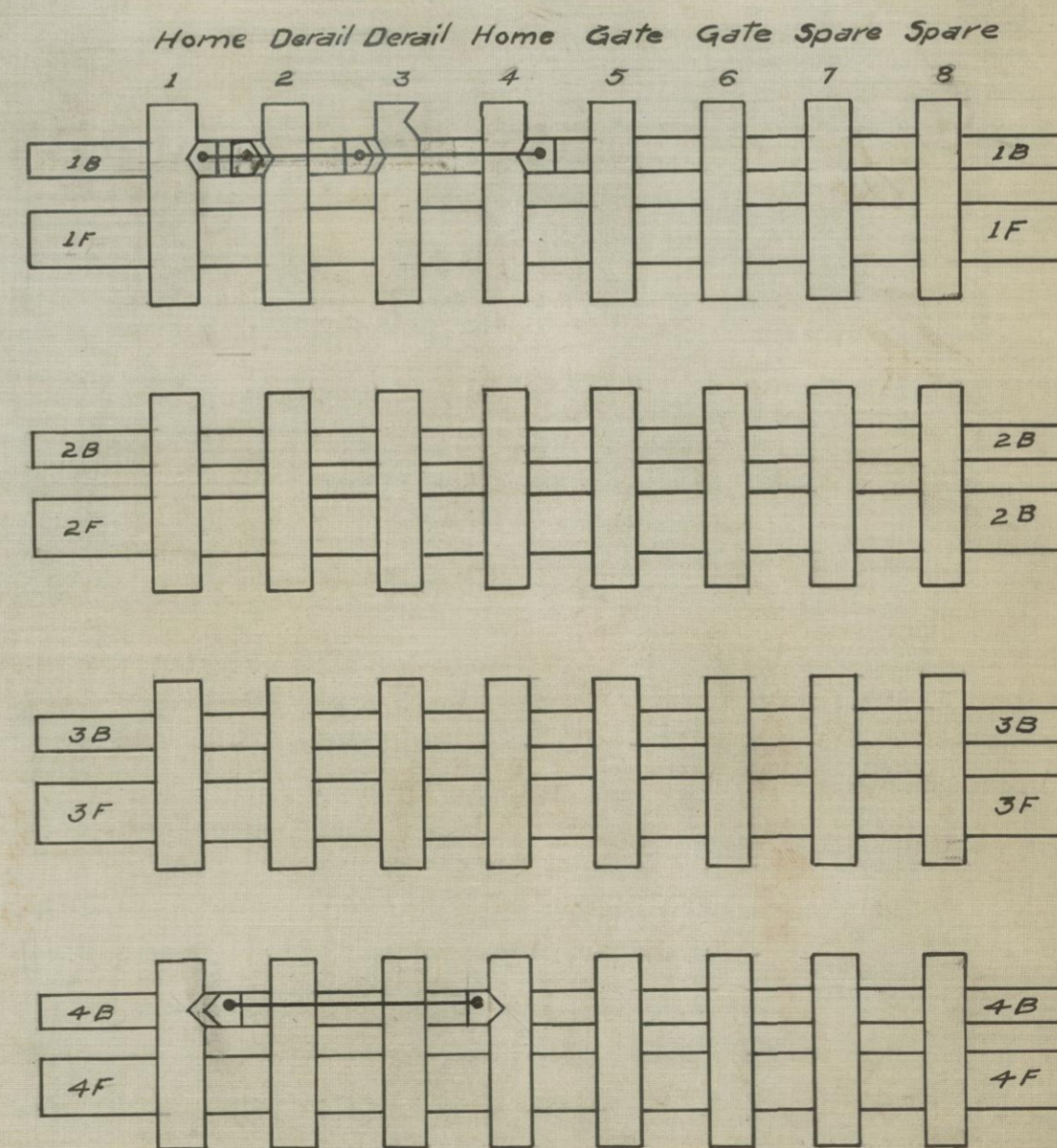
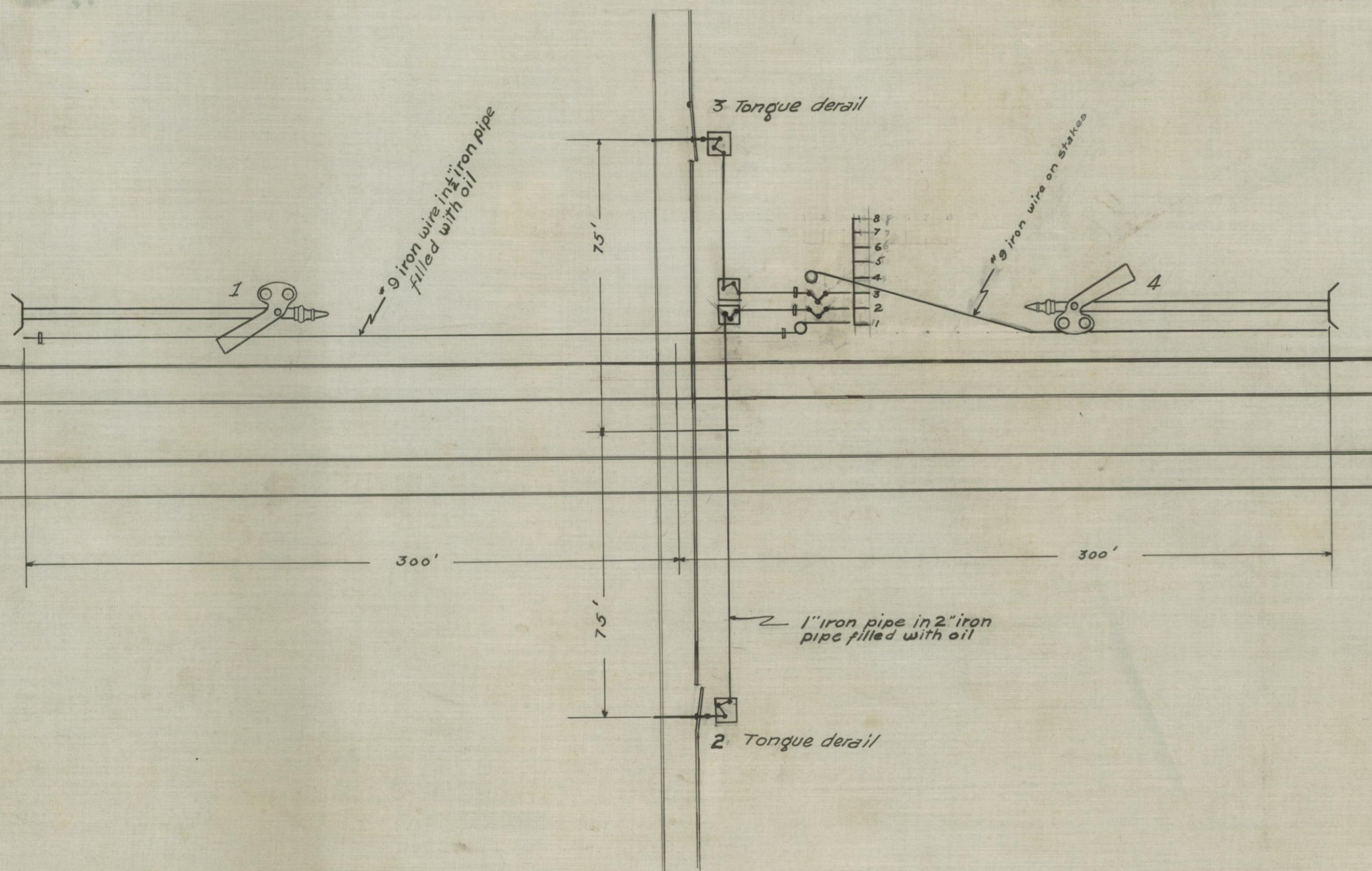


Lever 2 & 3 to be pipe connected and to have
 $8\frac{3}{4}$ " - $9\frac{3}{4}$ " - $10\frac{3}{4}$ " stroke front only
 Levers 1 & 4 to be wire connected and to have
 $12\frac{3}{4}$ " - $14\frac{3}{4}$ " - $16\frac{3}{4}$ " stroke front & back with shackle #9908
 Levers 5 & 6 to have blank tail levers.

TORONTO, ONT. 25819B
 TRACK PLAN, LOCKING SHEET & DOG CHART
 TORONTO SUBURBAN RAILWAY
 ESTIMATE #2219 CONTRACT 1304 CML.
 GENERAL RAILWAY SIGNAL CO ROCHESTER N.Y.

Lever	When	Locks	R-12512 2-7-10
1		2-3	Feb-9-1910
2			Tower location changed.
3			Locking Revised R-12512-2-6-10-10
4		2-3-1	B June 10-1910
5		Gate	
6		Gate	
7	Spare		
8	Spare		



Drawn by: RC RF
 Checked by: PAB
 P.E. Carter.
 Spec
 P.E. Carter.
 Locking
 Approved
 J.K. Howe. & 2/9/10.
 For G.R.S.Co.
 Approved

For R.R. Co.