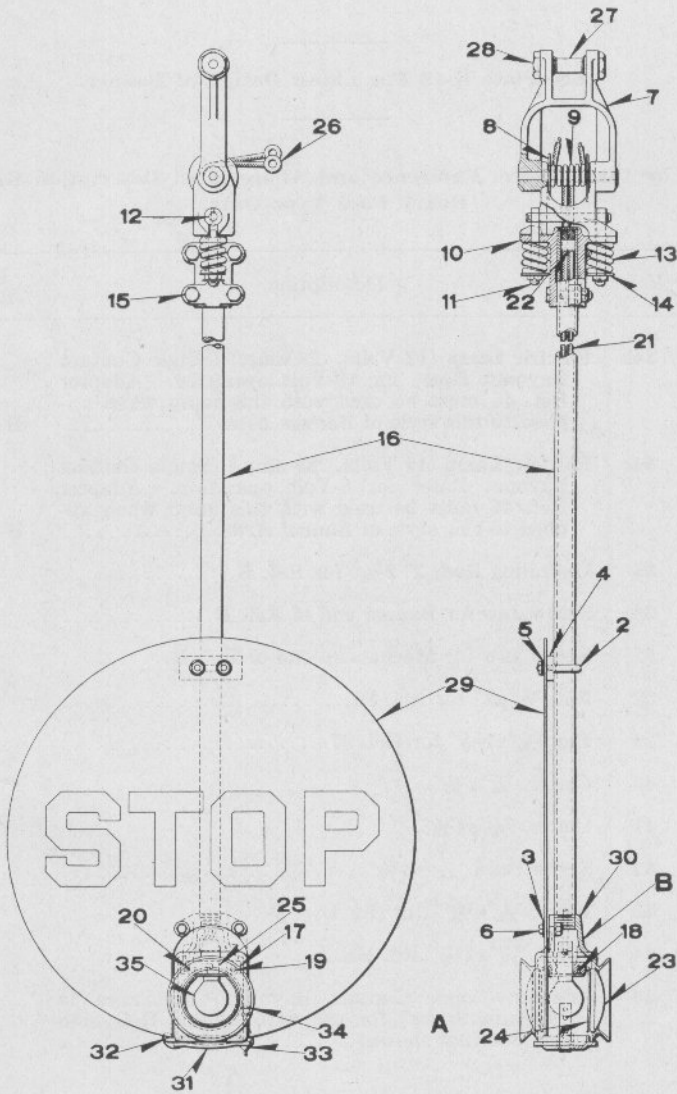


UNION SWITCH & SIGNAL CO.



BANNER FOR STYLE "DW" AUTOMATIC FLAGMAN

UNION SWITCH & SIGNAL CO.

BANNER FOR STYLE "DW" AUTOMATIC FLAGMAN

Order by Plate, Piece, Reference and Abbreviated Description Given in Heavy Face Type Only.

Piece	Ref.	Description	Drawing Reference
123199	A	Banner lettered "STOP" without Lamp Bulb, Ref. 35 (includes Refs. 2 to 6).....	C-8884-21
123201	Aa	Banner lettered "STOP" with 3/4" Black Rim around outer edge on both sides without Lamp Bulb, Ref. 35 (includes Refs. 2 to 6).....	C-8884-21
123200	Ab	Banner, lettered "STOP and ARRETEZ" without Lamp Bulb, Ref. 35 (includes Refs. 2 to 6).....	C-8884-21
128940	Ac	Banner, with 1" Black Rim around outer Edge, Black Cross in center and Background White without Lamp Bulb, Ref. 35 (includes Refs. 2 to 6).....	C-8884-21
122887	Ad	Banner, without Disc and Lamp Bulb Ref. 35 (includes Refs. 7 to 35).....	C-8884-21
133966	B	Light Housing with Bayonet Socket, Base, Lenses and Springs.....	C-8884-21
123892	Ba	Light Housing with Door.....	C-8884-21
75767	2	1/4" U Bolt with two 1/4" Hex. Nuts.....	8782-136
70539	3	Lead Washer.....	8274-73
75768	4	Plate Washer.....	7826-203
73099	5	Washer.....	7826-66
	6	Machine Bolt, 1/4" x 3/4" Hex. Hd. S. with 1/4" Hex. Nut and 1/4" Plain Lock Washer (Cad. Pl.)	
75773	7	Bearing.....	C-8884-3
67714	8	Washer.....	8078-1092
78292	9	Tubeing.....	B-10275-1

UNION SWITCH & SIGNAL CO.

BANNER FOR STYLE "DW" AUTOMATIC FLAGMAN
(Continued)

Order by Plate, Piece, Reference and Abbreviated Description Given in Heavy Face Type Only.

Piece	Ref.	Description	Drawing Reference
75760	10	Clamp.....	C-8884-3
75761	11	Eye Bolt.....	8034-145
34770	12	Pin, $\frac{3}{8}$ "x $3\frac{13}{16}$ " with $\frac{1}{8}$ "x $\frac{3}{4}$ " Cotter.....	B-10209-1
75762	13	Spring.....	7770-288
	14	Washer, $\frac{3}{8}$ " Std. Pl. for Ref. 13.	
	15	Machine Bolt, $\frac{3}{8}$ "-16x $1\frac{3}{4}$ " Hex. Hd. (Cad. Pl.) with $\frac{3}{8}$ " Hex. Nut.	
123204	16	Pipe.....	B-10925-2
123205	17	Receptacle.....	12443-67
	18	Wood Screw No. 6x $\frac{1}{2}$ " Rd. Hd. Br. (Nickel Plated)	
	19	Machine Screw No. 6-40x $\frac{1}{2}$ " Fil. Hd. Br.	
34744	20	Washer.....	7828-69
75765	21	Wire Lead.....	B-9998-9
75766	22	Plug.....	C-7330-5
129505	23	Red Lens.....	B-8276-32
123209	24	Spring.....	8124-210
	25	Plug Socket Single Bayonet Contact Base.	
45304	26	Terminal.....	8064-299
78392	27	Pin, $\frac{3}{4}$ "x $2\frac{1}{2}$ ".....	8076-77
77791	29	Trunnion.....	8378-338

UNION SWITCH & SIGNAL CO.

BANNER FOR STYLE "DW" AUTOMATIC FLAGMAN
(Continued)

Order by Plate, Piece, Reference and Abbreviated Description Given in
Heavy Face Type Only.

Piece	Ref.	Description	Drawing Reference
123206	29	Banner Disc (Lettered "STOP") for Ref. A.....	10933-39
123187	29a	Banner Disc (Lettered "STOP") with 3/4" Black Rim around outer Edge on both sides for Ref. Aa....	10933-41
123186	29b	Banner Disc (Lettered "STOP and ARRETEZ") for Ref. Ab.....	10933-40
128938	29c	Banner Disc with 1" Black Rim around outer Edge, Black Cross in Center and Background White for Ref. Ac.....	10933-42
123224	30	Housing.....	C-8884-20
121575	31	Door.....	C-8884-22
65601	32	Rivet.....	10301-50
123207	33	Spring.....	8735-599
54920	34	Rivet.....	10301-1
120802	35	Electric Lamp (12 Volts, .25 amp.) for 10 Volt Storage Battery operation.....	B-12409-12
120801	35a	Electric Lamp (10 Volts, .25 amp.) for 8-Volt oper- ation.....	B-12409-12
120803	35b	Electric Lamp (13.5 Volts, .25 amp.) for 10-Volt (16 cell) primary battery operation.....	B-12409-12