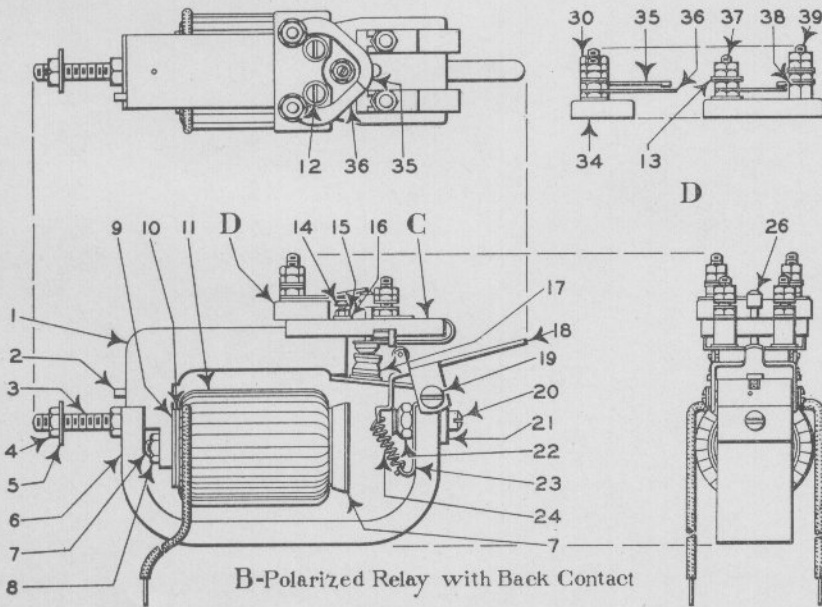


A-Polarized Relay without Back Contact



B-Polarized Relay with Back Contact

Polarized Relays
For Electric Interlocking Machines

Electric Interlocking Machines

Polarized Relays

NOTE: Name and location of the interlocking plant for which materials are required should be shown on order.

Polarized Relays listed below are equipped with lever Fig. 18, which is 1" long, for restoring relay to the normal position by hand. Relays can be furnished with lever 1 3/4" long, which extends through back of relay case (See Plate G0117 Figs. 12, 13 and 14). If long lever is desired order should specify "With long lever Fig. 18a."

If relays other than those listed are required give information when ordering.

Drawing references are shown for convenience in checking shipping lists and invoices.

Fig. No.	Name	Drawing Reference
Order by plate, figure number and name		
A	Polarized Relay Complete, as shown, without back contact, for switch, or Models 3 or 7 solenoid dwarf signals.....	33880-1 Gr. 1
A1	as above, except for Model 2A signal.....	33880-1 Gr. 2
A2	same as Fig. A, except for 110 volt, low-speed switch machine.....	33880-1 Gr. 11
A3	same as Fig. A, except for 110 volt, medium-speed switch machine.....	33880-1 Gr. 13
A4	same as Fig. A, except for 220 volt, high-speed switch machine.....	33880-1 Gr. 15
B	Polarized Relay Complete, as shown, with back contact. Has light indicator contact normally open, for switch, Models 3 or 7 solenoid dwarf signals.....	33880-2 Gr. 1
B1	as above, except with light indicator contact normally closed.....	33880-2 Gr. 8
B2	same as Fig. B, except for Model 2A signal.....	33880-2 Gr. 3
B3	same as Fig. B2, except has light indicator contact normally closed.....	33880-2 Gr. 9
B4	same as Fig. B, except for 110 volt, low-speed switch machine.....	33880-2 Gr. 5
B5	same as Fig. B4, except has light indicator contact normally closed.....	33880-2 Gr. 10
B6	same as Fig. B, except for 110 volt, medium-speed or 220 volt, high-speed switch machine.....	33880-2 Gr. 12
B7	same as Fig. B6, except has light indicator contact normally closed.....	33880-2 Gr. 11
C	Terminal Board Complete, as shown, for relays Figs. A and B. Includes contacts, terminal posts, nut and washers.....	46609-2 Gr. 1

(Continued on following page)

Electric Interlocking Machines
Polarized Relays

Drawing references are shown for convenience in checking shipping lists and invoices.

Fig. No.	Name	Drawing Reference
Order by plate, figure number and name		
D	Terminal Board Complete, has light indicator contacts normally open. Includes springs, terminal posts, nuts and washers.	46609-3 Gr. 1
D1	as above, except has light indicator contacts normally closed.	46609-3 Gr. 2
1	Bracket, for relays Figs. A and B.	33882-1
2	Pin, 1/8" dia. x 1/2" lg., for holding relay in upright position.	20592
3	Stud, No. 14-24, for mounting relay.	49476-10
4	Nut, No. 14-24 x 3/16" hex., for stud Fig. 3.	42839
5	Washer, for stud Fig. 3.	069
6	Magnet, for relays Figs. A and B. Has "N" stamped on end.	46634
6a	as above, except has "S" stamped on end.	46634-1
7	Core Complete, for relays Figs. A and B.	33884-1 Gr. 1
8	Nut, No. 14-24 x 3/16" hex., for core.	50637-1
9	Washer, for coil, for use next to frame.	30078
10	Washer, for coil, for use next to coil.	4452
11	Coil, .204 ohm resistance, for relays Figs. A, A3, B and B1.	33881 Gr. 10
11a	as above, except 3.6 ohms resistance, for relays Figs. A1, B2 and B3.	33881 Gr. 4
11b	same as Fig. 11, except 1.68 ohms resistance, for relays Figs. A2, B4 and B5.	33881 Gr. 9
11c	same as Fig. 11, except .37 ohm resistance, for relays Figs. A4, B6 and B7.	33881 Gr. 3
12	Screw, No. 10-32 x 7/8" rd. hd., for mounting terminal board Fig. C to relay.	2438-18
13	Washer, for screws Figs. 12 and 29.	5046-2
14	Screw, No. 4-36 x 1 1/4" rd. hd., for armature adjustment.	15753-2
15	Nut, No. 4-36 x 1/8" hex., for screw Fig. 14.	12680-1
16	Washer, for screw Fig. 14.	17540-1
17	Armature Complete, includes contacts and bearing Fig. 21.	33888-6 Gr. 1

(Continued on following page)

Electric Interlocking Machines
Polarized Relays

Drawing references are shown for convenience in checking shipping lists and invoices.

Fig. No.	Name	Drawing Reference
Order by plate, figure number and name		
18	Lever Complete, 1" long, includes roller and pin, for hand releasing relay	51181 Gr. 1
18a	as above, except 1 3/4" long, for extending through back of relay case	51181 Gr. 2
19	Screw, No. 8-32, shouldered, for fastening lever to bearing Fig. 21.	3628-3
20	Screw, No. 14-24 x 7/8" fil. hd., for mounting bearing to magnet	12651-8
21	Bearing, for armature and lever.	33886-2
22	Nut, No. 14-24 hex., for screw Fig. 20.	42843-1
23	Support, for spring Fig. 24.	51180
24	Spring, for lever.	1581-6
25	Indicator Complete, for relays Figs. A to A4, for indicating whether relay contacts are open or closed. Includes aluminum cap and rivet.	{ 29756-2 42414-1
26	Indicator Complete, for relays Figs. B to B7, for indicating whether relay contacts are open or closed. Includes formica cap and rivet.	{ 29756-2 29493-9
27	Contact Spring, with graphite contact, for terminal board Fig. C	40471-1 Gr. 1
28	Terminal Board, only, for terminal board complete Fig. C.	46617-1
29	Screw, No. 10-32 x 7/8" sq. hd., used as terminal post.	46620
30	Nut, No. 10-32 x 1/8" hex., for terminal post.	40796
31	Washer, for terminal post.	43083-2
32	Stop, left hand, for contact spring.	35470-21
33	Stop, right hand, for contact spring.	35470-20
34	Terminal Board, only, for terminal board complete Fig. D.	46617-3
35	Spring, with contact, for terminal board.	6865-13
36	Spring, without contact, for terminal post.	6865-12
37	Screw, No. 10-32 x 7/8" sq. hd., used as terminal post for terminal board.	50973-2
38	Nut, No. 10-32 x 1/4" hex., for terminal post Fig. 39.	577-7
39	Screw, No. 10-32 x 1" sq. hd., used as terminal post for terminal board.	50793-3