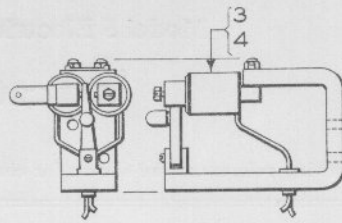
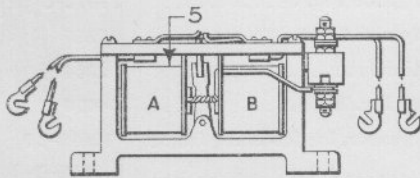


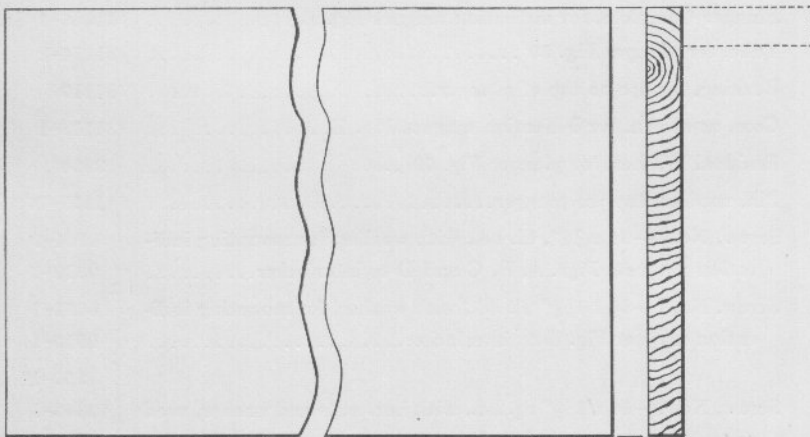
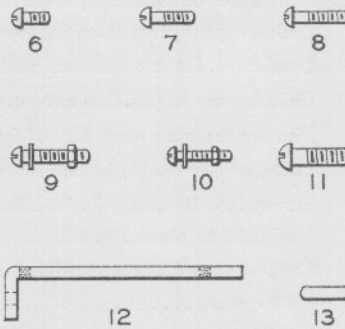
B - Polarized Relay



C - Polarized Relay  
D - Polarized Relay



E-Indication Selector



14-15-16-17-18

Polarized Relays and Indication Selector  
For Model 2 Electric Interlocking Machines

**Model 2 Electric Interlocking Machines**  
**Polarized Relays and Indication Selector**  
**For Repair Parts Only**

NOTE: See Plate G0505 for relays complete and plate G0509 for selectors complete.

Drawing references are shown for convenience in checking shipping lists and invoices.

Fig. No.	Name	Drawing Reference
<b>Order by plate, figure number and name</b>		
A	Polarized Relay Complete, as shown, Model 2 Form A, for switch, solenoid dwarf and Model 3 or Model 7 signal levers. . . . .	33880
B	Polarized Relay Complete, Model 2 Form A, for Model 2A high or dwarf signal levers. . . . .	34534
C	Polarized Relay Complete, as shown, Model 1 Form A, for switch, solenoid dwarf and Model 3 or Model 7 signal levers. . . . .	4931
D	Polarized Relay Complete, Model 1 Form A, for Model 2A high or dwarf signal levers. . . . .	30009
E	Indication Selector Complete, as shown, for switch levers. . . . .	2550
1	Coil, for polarized relay Fig. A. Specify function of lever from which relay is operated. . . . .	
2	Coil, for polarized relay Fig. B. Specify function of lever from which relay is operated. . . . .	
3	Coil, for polarized relay Fig. C. Specify function of lever from which relay is operated. . . . .	
4	Coil, for polarized relay Fig. D. Specify function of lever from which relay is operated. . . . .	
5	Coil, for indication selector Fig. E. Specify whether coil "A" or "B" is desired. Specify function of lever from which relay is operated	
6	Screw, 1/4" x 5/8" rd. hd., for fastening brace Fig. 12 to bar supporting 12" terminal board. . . . .	2451
7	Screw, 1/4" x 1" rd. hd., for fastening selector board to brace Fig. 12	2455
8	Screw, 1/4" x 1 1/4" rd. hd., for fastening selector boards Figs. 14, 15, and 16 to brackets. . . . .	2456
9	Screw, 1/4" x 1 1/2" rd. hd., with washer, and hex. nut, for fastening indication selectors to boards. (1-9a, 1-9b, 1-9c) . . . . .	

(Continued on following page)

**Model 2 Electric Interlocking Machines**  
**Polarized Relays and Indication Selector**  
**For Repair Parts Only**

Drawing references are shown for convenience in checking shipping lists and invoices.

Fig. No.	Name	Drawing Reference
<b>Order by plate, figure number and name</b>		
9a	Screw, only, for Fig. 9 . . . . .	7369
9b	Washer, only, for Fig. 9 . . . . .	1225-1
9c	Nut, only, for Fig. 9 . . . . .	20098
10	Screw, No. 10-32 x 1 1/4" rd. hd., with washer and hex. nut, for fastening polarized relays Fig. C and Fig. D to terminal board (1-10a, 1-10b, 1-10c) . . . . .	
10a	Screw, only, for Fig. 10 . . . . .	4591
10b	Washer, only, for Fig. 10 . . . . .	3890
10c	Nut, only, for Fig. 10 . . . . .	577
11	Screw, 3/8" x 1 1/4" rd. hd., for fastening selector board Fig. 17 to bracket . . . . .	18429
12	Brace, for supporting selector board when 12" terminal board is used . . . . .	4835
13	Dowel Pin, for fastening indication selector Fig. E to board . . . . .	43042
14	Board, for supporting indication selectors on 8 1/2" terminal board bracket, includes plates and screws, used on interlocking machine shown on Plate G0101. Length as specified . . . . .	
15	Board, for supporting indication selectors on 12" terminal board bracket, used on interlocking machine shown on Plate G0101 Length as specified . . . . .	34069
16	Board, for supporting indication selectors on 16" terminal board bracket, used on interlocking machines shown on Plates G0101 and G0105. Length as specified . . . . .	34070
17	Board, includes strip shown in dotted lines, for supporting indication selectors, used on interlocking machines shown on Plate G0105 . . . . .	42356
18	Board, for supporting indication selectors, used on interlocking machine shown on Plate G0111. Length as specified . . . . .	32108