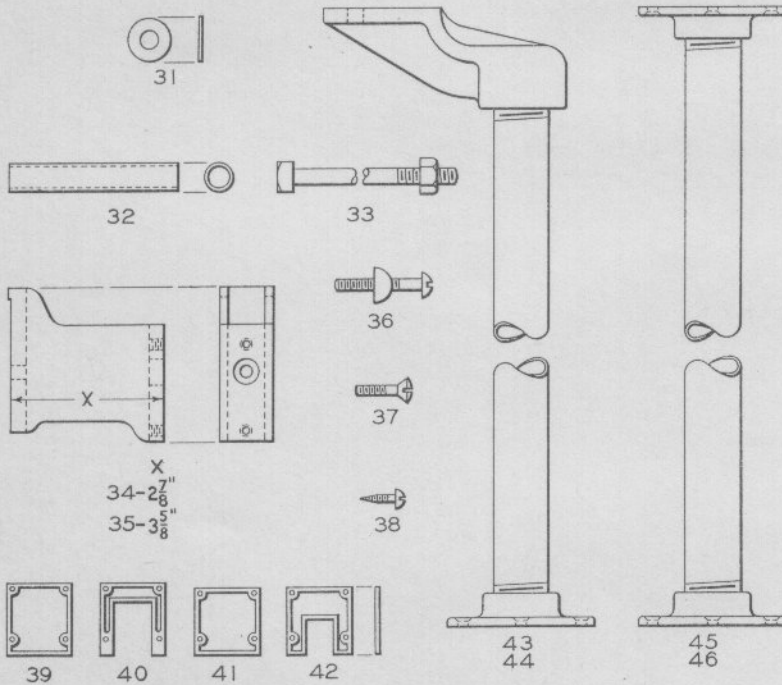


FIG 1 TO FIG.30 INCLUSIVE
CABINET FOR MODEL 2 INTERLOCKING MACHINES



Cabinets for Model 2 Interlocking Machines

Model 2 Electric Interlocking Machines Cabinets

NOTE: Cabinet and parts shown on opposite page are for use with Model 2 Electric Interlocking Machine shown on Plate G0101. Cabinets are made of oak, and unless otherwise specified will be light finish.

Drawing references are shown for convenience in checking shipping lists and invoices.

Fig. No.	Name	Drawing Reference
Order by plate, figure number and name		
1	Cabinet, for 4 lever machine, dimension "X" 1'-3"	3967
2	Cabinet, for 8 lever machine, dimension "X" 1'-11"	5203
3	Cabinet, for 12 lever machine, dimension "X" 2'-7"	4053
4	Cabinet, for 16 lever machine, dimension "X" 3'-3"	3877
5	Cabinet, for 20 lever machine, dimension "X" 3'-11"	4212
6	Cabinet, for 24 lever machine, dimension "X" 4'-7"	3437
7	Cabinet, for 28 lever machine, dimension "X" 5'-3"	4447
8	Cabinet, for 32 lever machine, dimension "X" 5'-11"	3446
9	Cabinet, for 36 lever machine, dimension "X" 6'-7"	3752
10	Cabinet, for 40 lever machine, dimension "X" 7'-3"	3599
11	Cabinet, for 48 lever machine, dimension "X" 8'-7"	4471
12	Cabinet, for 56 lever machine, dimension "X" 9'-11"	3444
13	Cabinet, for 64 lever machine, dimension "X" 11'-3"	3217
14	Cabinet, for 72 lever machine, dimension "X" 12'-7"	4666
15	Cabinet, for 80 lever machine, dimension "X" 13'-11"	7727
16	Cabinet, for 88 lever machine, dimension "X" 15'-3"	6769
17	Cabinet, for 96 lever machine, dimension "X" 16'-7"	4436
18	Cabinet, for 104 lever machine, dimension "X" 17'-11"	7730
19	Cabinet, for 112 lever machine, dimension "X" 19'-3"	7732
20	Cabinet, for 120 lever machine, dimension "X" 20'-7"	6516
21	Cabinet, for 128 lever machine, dimension "X" 21'-11"	7735
22	Cabinet, for 136 lever machine, dimension "X" 23'-3"	7737
23	Cabinet, for 144 lever machine, dimension "X" 24'-7"	4309
24	Cabinet, for 152 lever machine, dimension "X" 25'-11"	7740
25	Cabinet, for 160 lever machine, dimension "X" 27'-3"	7742

(Continued on following page)

Model 2 Electric Interlocking Machines Cabinets

Drawing references are shown for convenience in checking shipping lists and invoices.

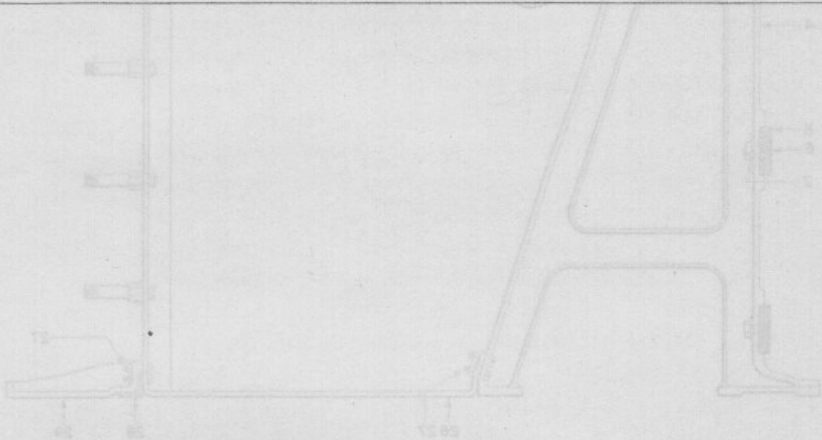
Fig. No.	Name	Drawing Reference
Order by plate, figure number and name		
26	Cabinet, for 168 lever machine, dimension "X" 28'-7"	7743
27	Cabinet, for 176 lever machine, dimension "X" 29'-11"	7744
28	Cabinet, for 184 lever machine, dimension "X" 31'-3"	7745
29	Cabinet, for 192 lever machine, dimension "X" 32'-7"	4472
30	Cabinet, for 200 lever machine, dimension "X" 33'-11"	7746
31	Washer, for bolt Fig. 33	071
32	Support, $\frac{3}{8}$ " pipe, for rear of cabinet	
32a	as above, except with bolt and washers. (4-31, 1-32, 1-33)	
33	Bolt, $\frac{3}{8}$ " x $7\frac{1}{2}$ " sq. hd., with hex. nut, used with support Fig. 32	
34	Bracket, used between cabinet and front of machine when lever latches are used. Dimension "X" $2\frac{7}{8}$ "	27564
34a	as above, except with screws, for fastening cabinet to frame. (1-34, 1-36, 2-37)	
35	Bracket, used between cabinet and front of machine when lever latches are not used. Dimension "X" $3\frac{5}{8}$ "	3337
35a	as above, except with screws, for fastening cabinet to frame. (1-35, 1-36, 2-37)	3448
36	Screw, includes nut as shown, for fastening brackets Fig. 34 and Fig. 35 to frame	
36a	Screw, $\frac{5}{16}$ " x 2" rd. hd., for Fig. 36	3084
36b	Nut, for Fig. 36	1976
37	Screw, $\frac{1}{4}$ " x $1\frac{1}{4}$ " fr. hd., for fastening cabinets to brackets Fig. 34 and Fig. 35	3435
38	Screw, No. 4 x $\frac{1}{2}$ " rd. hd., for fastening plates Figs. 39, 40, 41 and 42 to cabinet	3104
39	Plate, for spare spaces when lever latches are used	4872
40	Plate, for lever spaces when lever latches are used	4871
41	Plate, for spare spaces when lever latches are not used	3349

(Continued on following page)

Model 2 Electric Interlocking Machines
Cabinets

Drawing references are shown for convenience in checking shipping lists and invoices.

Fig. No.	Name	Drawing Reference
Order by plate, figure number and name		
42	Plate, for lever spaces when lever latches are not used.	3348
43	Leg Complete as shown, for supporting cabinet on one, two or three tier machines.	34504
44	Leg Complete as shown, for supporting cabinet on four tier machines	34505
45	Leg Complete as shown, for supporting cabinet on one, two or three tier machines.	3347
46	Leg Complete as shown, for supporting cabinet on four tier machines	8917



Frame for Model 2 Unit-Lever Type Interlocking Machine