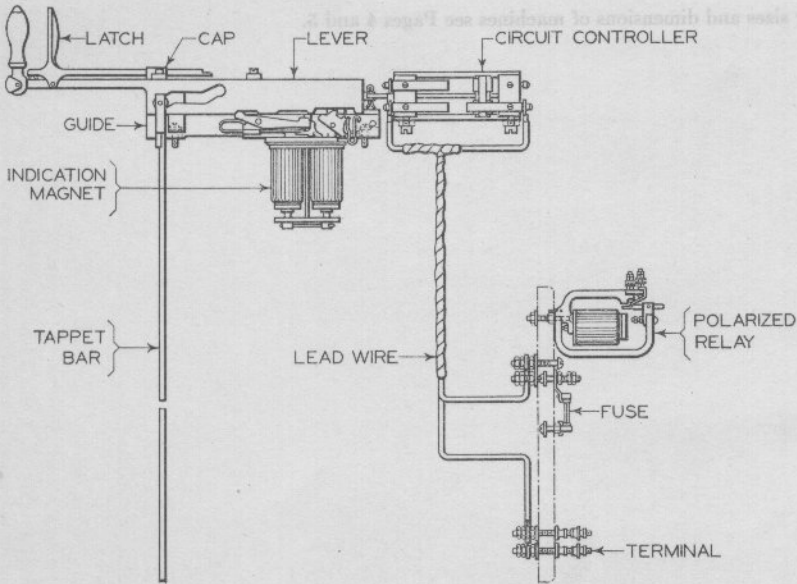


A-Switch Lever Complete



B-Signal Lever Complete

Levers Complete for Adding to an Existing Machine

Model 2 Electric Interlocking Machine Levers

NOTE: Levers complete as illustrated on opposite page include all the material required for adding an additional lever to an existing Model 2 Machine such as is shown on Plate G0101 or where it is desired to replace a signal lever complete with a switch lever complete or vice versa.

Buffer springs are not recommended for levers listed below, but will be furnished when specified by customer. See Plate G0302.

Lever locks, time locks or other appliances are not included and must be ordered separately if desired. If levers notched for lever locks are required same must be specified, giving the position in which the levers are to be locked.

Levers complete are listed below for Model 2 Machines with the original form of locking (two locking bars to a slot) and for Model 2 Machines with modified locking (four locking bars to a slot). Particular care should be exercised when ordering, to select levers to match those already in the machine. To avoid error it is recommended that name and location of plant for which material is required be shown on order.

Drawing references are shown for convenience in checking shipping lists and invoices.

Fig. No.	Name	Drawing Reference
Order by plate, figure number and name		
A	<p>Lever Complete, for single switch or derail. Includes all apparatus necessary for adding lever in machine.</p> <p>Order must specify the following:</p> <p>(1) Name and location of interlocking plant.</p> <p>(2) Whether machine is equipped with modified locking (four locking bars to a slot) or with original form of locking (two locking bars to a slot).</p> <p>(3) See Plate G0302 and specify Fig. reference for lever desired.</p> <p>(4) Lever number.</p> <p>(5) Color of grip.</p> <p>(6) Model and operating voltage of switch machine.</p> <p>(7) Number of tiers of locking.</p> <p>(8) Specify if machine is equipped with 8½", 12" or 16" terminal board.</p> <p>(9) If lever is to be notched for electric lock specify if for solenoid</p>	

(Continued on following page)

Model 2 Electric Interlocking Machine

Levers

Drawing references are shown for convenience in checking shipping lists and invoices.

Fig. No.	Name	Drawing Reference
Order by plate, figure number and name		
A <i>Cont.</i>	lock as shown on Plate G1111 or forced drop lever lock as shown on Plate G1112, also position it is desired to lock lever i.e. normal, reverse, etc. See Plate G1115 for lever notching.	
AI	as above, except with stub lever for double switch.	
Order must specify information as required in Fig. A.		
B	Lever Complete, for signal. Includes all apparatus necessary for adding lever in machine.	
Order must specify the following:		
	(1) Name and location of interlocking plant.	
	(2) Whether machine is equipped with modified locking (four locking bars to a slot) or with original form of locking (two locking bars to a slot).	
	(3) See Plate G0302 and specify Fig. reference for lever desired.	
	(4) Lever number.	
	(5) Color of grip.	
	(6) Specify type of signal, lever will control, i.e., solenoid, Model 2A or light signal.	
	(7) Dynamic or battery indication. If battery indication give voltage, if A.C., give voltage and frequency.	
	(8) Number of tiers of locking.	
	(9) Specify if lever is to be notched for time lock or time contactor.	