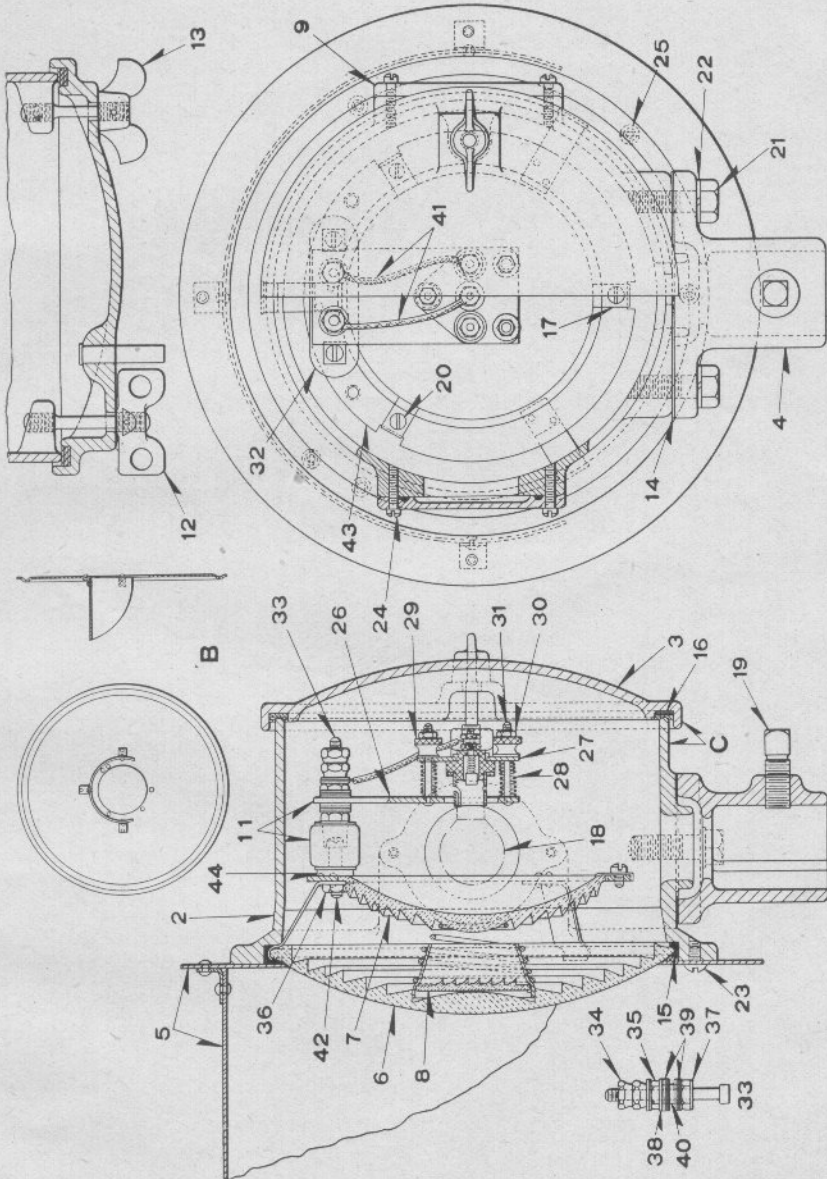


UNION SWITCH & SIGNAL COMPANY



MARKER LIGHTS AND INOPERATIVE SIGNAL UNITS

UNION SWITCH & SIGNAL COMPANY
 COLOR LIGHT SEARCHLIGHT SIGNAL
 DETAIL PARTS
 MARKER LIGHT, STYLE HC-33

Order by Plate, Piece, Reference and Abbreviated Description Given in
 Heavy Face Type Only.

Piece	Ref.	Description	Drawing Reference
149921	A	Lamp Unit with Hood, 12" Diam. Background and Lunar White Back Lens (Without Lamp Bulb Ref. 18) (Single Contact Auto. Headlight Type Lamp).....	C-8965-33
	Aa	Lamp Unit with Hood, 2' 11" Diam. Background and Red Back Lens (without Lamp Bulb Ref. 18) (S. C. Auto. Headlight Type Lamp).....	C-8965-33
	Ab	Lamp Unit with Hood, 2' 11" Diam. Background and Yellow Back Lens (without Lamp Bulb Ref. 18) (S. C. Auto. Headlight Type Lamp).....	C-8965-33
151059	Ac	Lamp Unit with Red Back Lens, without Hood, Background and Bulb Ref. 18 (Single Contact Auto. Headlight Type Lamp) for Ref. Aa.....	C-8965-33
152306	Ad	Lamp Unit with Yellow Back Lens, without Hood, Background and Lamp Bulb Ref. 18 (Single contact Auto. Headlight Type Lamp) for Ref. Ab..	C-8965-33
151058	B	Hood and 2' 11" Diam. Background with 1/8"x3/8" Rivets for Refs. Aa and Ab.....	C-8964-71
149920	C	Case and Door with Gasket and Wing Nuts....	C-8965-33
149917	2	Case only.....	C-8964-33
132415	3	Door.....	C-8964-34
149886	4	Lamp Unit Support.....	C-8964-68
149987	5	Hood and 12" Diam. Background with 1/8"x3/8" Rivets.....	C-8964-71
71186	6	Lens 8 3/8" Diam. (Clear).....	B-8276-22
150837	7	Lens 5 1/2" Diam. (Lunar White) for Ref. A.....	B-8276-23
68162	7a	Lens 5 1/2" Diam. (Yellow) for Ref. Ad.....	B-8276-23

UNION SWITCH & SIGNAL COMPANY

COLOR LIGHT SEARCHLIGHT SIGNAL

DETAIL PARTS

MARKER LIGHT, STYLE HC-33

(Continued)

Order by Plate, Piece, Reference and Abbreviated Description Given in Heavy Face Type Only.

Piece	Ref.	Description	Drawing Reference
71329	7b	Lens 5 1/2" Diam. (Red) for Ref. Ac	B-8276-23
130694	8	Deflecting Unit for near indication 25° spread	C-8901-63
125749	9	Cover	C-8964-22
151774	10	Lens Ring (Not Shown) for Refs. Ac and Ad	7436-106
149888	11	Lamp Socket (Single Contact) with Terminal Block, Lens Support and Lamp Socket	C-8964-68
149887	11a	Lamp Socket (Single Contact) without Lens Support	C-8964-68
132539	12	Wing Nut	8331-69
132541	13	Wing Nut	8331-70
135185	14	Gasket	8078-1420
131706	15	Gasket	8078-1367
124383	16	Gasket	8078-717
76735	17	Clip	11893-31
145877	18	Lamp Bulb, 11-Volts, 11-Watts	B-12409-18
142967	18a	Lamp Bulb, 8-Volts, 10-Watts	B-12409-18
	19	Set Screw, 1/2"x1" Cup Point Iron.	
	20	Machine Screw, No. 10-30x1/4" Fil. Hd. Brass (N. P.)	
	21	Tap Bolt, 1/2"x1 1/4" Hex. Hd. (Cad. Pl.).	
	22	Lock Washer, 1/2" Plain S. (3/16"x3/32") Cad. Pl.	
	23	Machine Screw, No. 14-24x3/8" Rd. Hd. S. (Cad. Pl.).	

UNION SWITCH & SIGNAL COMPANY

COLOR LIGHT SEARCHLIGHT SIGNAL
 DETAIL PARTS
 MARKER LIGHT, STYLE HC-33

(Continued)

Order by Plate, Piece, Reference and Abbreviated Description Given in Heavy Face Type Only.

Piece	Ref.	Description	Drawing Reference
	23a	Machine Screw, No. 14-24x $\frac{1}{2}$ " Rd. Hd. S. (Cad. Pl.) used when Lens Ring Ref. 10 is used.	
	24	Machine Screw, No. 10-30x $\frac{5}{8}$ " Fil. Hd. S. (Cad. Pl.).	
	25	Machine Screw, No. 14-24x $\frac{3}{8}$ " Rd. Hd. S. (Cad. Pl.).	
149885	26	Lamp Support.....	11893-417
148204	27	Lamp Socket.....	12415-12
149104	28	Spring.....	8124-218
35790	29	Nut.....	8109-239
1515	30	Nut.....	8109-23
149105	31	Stud.....	8114-361
	32	Terminal Block with Terminal Posts, Nuts and Washers (Inc. 1-32a, 2-33, 4-34, 4-35, 6-37, 4-38 and 16-39).....	9968-628
114147	32a	Terminal Block only.....	9968-628
113978	33	Terminal Post.....	8094-1192
29101	34	Nut.....	8109-193
29103	35	Nut.....	8109-194
127260	36	Nut.....	8109-194
29102	37	Washer.....	7828-139
29104	38	Washer.....	7828-138
9468	39	Ins. Washer.....	8078-76
18470	40	Bushing.....	B-10270-1

PLATE B-2845

UNION SWITCH & SIGNAL COMPANY

COLOR LIGHT SEARCHLIGHT SIGNAL
DETAIL PARTS
MARKER LIGHT, STYLE HC-33

(Continued)

Order by Plate, Piece, Reference and Abbreviated Description Given in
Heavy Face Type Only.

Piece	Ref.	Description	Drawing Reference
138797	41	Lead	B-9990-11
	42	Machine Screw, No. 14-24x1" Fil. Hd. S. (Cad. Pl.) with Nut Ref. 36 and $\frac{1}{4}$ " Plain Lock Washer ($\frac{1}{16}$ " x $\frac{1}{16}$ ").	
132513	43	Lens Support	C-8964-32
122842	44	Gasket	8078-880