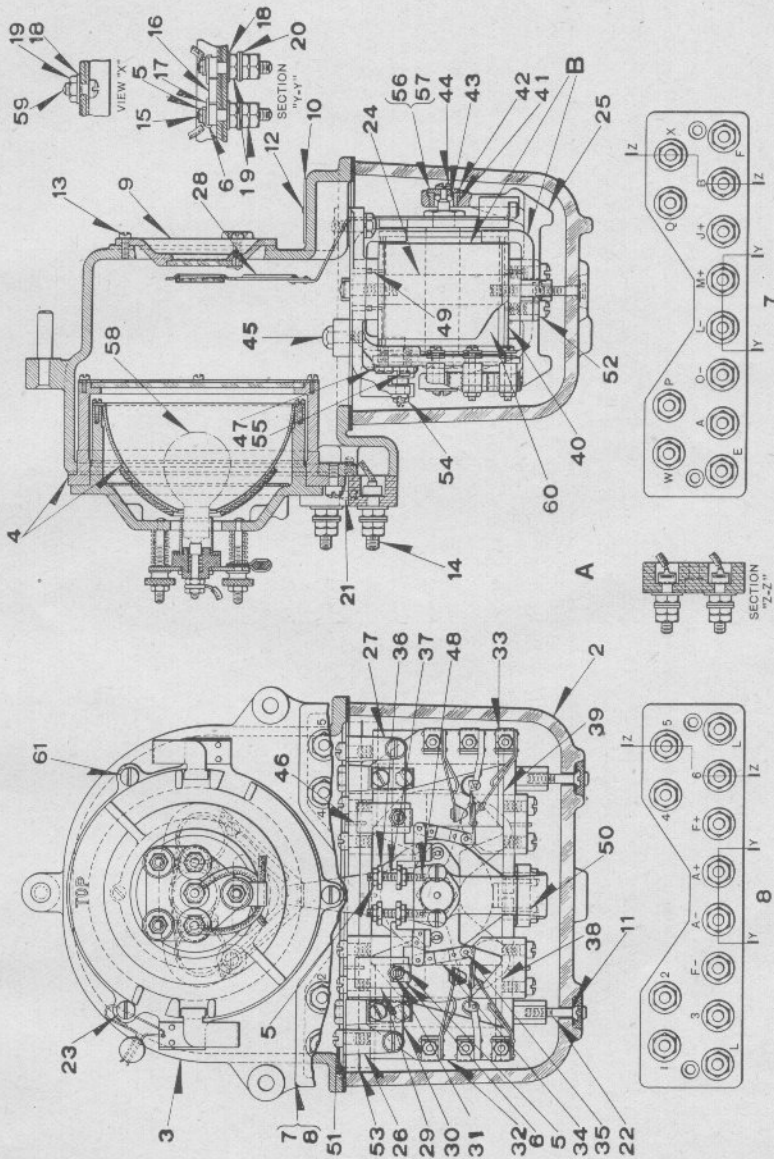


UNION SWITCH & SIGNAL COMPANY



SEARCHLIGHT SIGNAL RELAY (WITH CONTACTS)

UNION SWITCH & SIGNAL COMPANY

COLOR LIGHT SEARCHLIGHT SIGNAL

DETAIL PARTS

D. C. SEARCHLIGHT SIGNAL RELAY (WITH CONTACTS)

Unless otherwise specified, Relays will be furnished with Mechanism having right hand roundel Yellow, middle roundel Red and left hand roundel Green (approaching the signal) with Field Coil for 6-volt minimum and 8-volt maximum and Armature Coil for 6½-volt minimum and 8-volt maximum operation.

Order by Plate, Piece, Reference and Abbreviated Description Given in Heavy Face Type Only.

Piece	Ref.	Description	Drawing Reference
143574	A	D.C. Searchlight Signal Relay with Relay, Ref. Af and with R. H. Roundel Green, Middle Roundel Red and Left Hand Roundel Yellow (Without Lamp Bulb Ref. 58).....	C-9157-2
146768	Aa	D.C. Searchlight Signal Relay with Relay, Ref. Af and with R. H. Roundel Green, Middle Roundel Red and Left Hand Roundel Red (Without Lamp Bulb Ref. 58).....	C-9157-2
146769	Ab	D.C. Searchlight Signal Relay with Relay, Ref. Af and with R. H. Roundel Green, Middle Roundel Yellow and L.H. Roundel Yellow (Without Lamp Bulb Ref. 58).....	C-9157-2
146770	Ac	D.C. Searchlight Signal Relay with Relay, Ref. Af and with R. H. Roundel Red, Middle Roundel Red and L. H. Roundel Yellow (Without Lamp Bulb Ref. 58).....	C-9157-2
150169	Ad	D.C. Searchlight Signal Relay with Relay, Ref. Ag and with R. H. Roundel Green, Middle Roundel Red and L. H. Roundel Yellow (Without Lamp Bulb Ref. 58).....	C-9157-2
156462	Ae	D.C. Searchlight Signal Relay with Relay, Ref. Af and with R. H. Roundel Purple, Middle Roundel Purple and L. H. Roundel Yellow (Without Lamp Bulb Ref. 58).....	C-9157-2
151642	Af	D.C. Searchlight Signal Relay without Roundels (Inc. Refs. B and 8).....	C-9157-2
151700	Ag	D.C. Searchlight Signal Relay without Roundels (Inc. Refs. B and 7).....	C-9157-2
146146	B	Mechanism with Field Coils 500-Ohms per pair, Armature Coil 250-Ohms for D. C. Searchlight Signal Relay (Without Roundels).....	C-9157-2

UNION SWITCH & SIGNAL COMPANY

COLOR LIGHT SEARCHLIGHT SIGNAL  
DETAIL PARTS

D. C. SEARCHLIGHT SIGNAL RELAY (WITH CONTACTS)

(Continued)

Order by Plate, Piece, Reference and Abbreviated Description Given in Heavy Face Type Only.

Piece	Ref.	Description	Drawing Reference
141439	2	Lower Case.....	8163-292
144011	3	Upper Case.....	C-9158-4
148169	4	Reflector with Socket, Retaining Ring, Reflector Glass and Roundel Ring.....	C-9158-5
29956	5	Nut.....	8109-202
29353	6	Lock Washer.....	8486-106
	7	Terminal Board with Posts, Nuts and Washers (Inc. 1-7a, 10-14, 2-15, 1-16, 2-17, 12-18, 36-19 and 24-20).....	9968-850
150174	7a	Terminal Board for Ref. Ag.....	9968-850
	8	Terminal Board with Posts, Nuts and Washers (Inc. 1-8a, 10-14, 2-15, 1-16, 2-17, 12-18, 36-19 and 24-20).....	9968-806
143602	8a	Terminal Board for Ref. Af.....	9968-806
141657	9	Roundel Ring with Roundel, Clips and Rivets.....	7632-225
141725	10	Name Plate.....	8225-294
70539	11	Washer.....	8274-73
	12	Drive Screw, No. 6x1/4" (Cad. Pl.)	
	13	Machine Screw, No. 6-40x3/8" Fil. Hd. Br. (N. P.)	
141688	14	Terminal Post.....	8094-1192
141689	15	Terminal Post.....	8094-2179
410560	16	Connector.....	410561
410561	17	Clip.....	
29104	18	Washer.....	7828-138

UNION SWITCH & SIGNAL COMPANY

COLOR LIGHT SEARCHLIGHT SIGNAL  
DETAIL PARTS

D. C. SEARCHLIGHT SIGNAL RELAY (WITH CONTACTS)

(Continued)

Order by Plate, Piece, Reference and Abbreviated Description Given in Heavy Face Type Only.

Piece	Ref.	Description	Drawing Reference
29103	19	Nut.....	8109-194
29102	20	Washer.....	7828-139
	21	Machine Screw, No. 10-30x $\frac{5}{8}$ " Fil. Hd. Br. (N. P.)	
	22	Machine Screw, No. 10-30x $\frac{7}{8}$ " Flat Hd. S. (Cad. Pl.)	
153231	23	Screw.....	8098-868
148088	24	Magnet Core with Cores, Backstraps, Pole Pieces and Screws.....	C-9158-3
141711	25	Armature Bracket.....	C-9158-2
141709	26	L. H. Supporting Arm.....	C-9158-2
141710	27	R. H. Supporting Arm.....	C-9158-2
141719	28	Armature Assembly with Spectacle, 250-Ohm Coil, Armature, Pole Shoes, Rollers and Pins (Without Roundels).....	C-9158-3
141652	29	Counterweight.....	9672-192
141682	30	Operating Arm with Bearing Arms, Bushing and Rivets.....	11893-340
141726	31	Set Screw.....	8098-1297
141707	32	L. H. Contact Spring Board.....	9968-783
141708	33	R. H. Contact Spring Board.....	9968-783
141679	34	Link with Insulation and Rivets.....	8232-187
141701	35	Pin.....	8097-852
141675	36	Nut.....	8109-324
141698	37	Screw.....	8098-583

UNION SWITCH & SIGNAL COMPANY

COLOR LIGHT SEARCHLIGHT SIGNAL  
DETAIL PARTS

D. C. SEARCHLIGHT SIGNAL RELAY (WITH CONTACTS)

(Continued)

Order by Plate, Piece, Reference and Abbreviated Description Given in Heavy Face Type Only.

Piece	Ref.	Description	Drawing Reference
144740	38	L. H. Coil .....	8133-357
142142	39	R. H. Coil .....	8133-357
141676	40	Coil Spacer .....	10914-100
141686	41	Bearing .....	8350-706
141687	42	Bearing Cap .....	8350-706
	43	Steel Ball, 1/8" Diam. (1st Grade)	
141685	44	Screw .....	8098-1296
	45	Cap Screw, 1/4"-20x5/8" Hex. Hd. S. (Cad. Pl.)	
57496	46	Pin .....	8097-872
74798	47	Lock Washer .....	8486-155
54928	48	Rivet .....	10301-21
25948	49	Pin .....	8097-167
37409	50	Pin .....	8097-336
	51	Machine Screw, No. 14-24x1/2" Fil. Hd. S. (Cad. Pl.)	
	52	Machine Screw, No. 14-24x5/8" Fil. Hd. S. (Cad. Pl.)	
63915	53	Clip .....	8486-267
141684	54	Pivot Screw .....	8378-345
119318	55	Screw .....	8098-464
144155	56	Washer (.002 thick) for adjusting end play .....	7828-218
144156	57	Washer (.005 thick) for adjusting end play .....	7828-218

UNION SWITCH & SIGNAL COMPANY

COLOR LIGHT SEARCHLIGHT SIGNAL

DETAIL PARTS

D. C. SEARCHLIGHT SIGNAL RELAY (WITH CONTACTS)

(Continued)

Order by Plate, Piece, Reference and Abbreviated Description Given in Heavy Face Type Only.

Piece	Ref.	Description	Drawing Reference
145877	58	Lamp Bulb, 11-Volts, 11-Watts.....	B-12409-18
142967	58a	Lamp Bulb, 8-Volts, 10-Watts.....	B-12409-18
	59	Machine Screw, No. 14-24x $\frac{1}{2}$ " Fil. Hd. Br. (N.P.) with Nut Ref. 19 and Washer Ref. 18 as shown in View "X" (Used for Dummy Post).....	12471
141712	60	Armature Coil, 250-Ohms for Ref. 28.....	8133-356
	61	Machine Screw, No. 10-30x $\frac{1}{2}$ " Fil. Hd. S. (Cad. Pl.)	