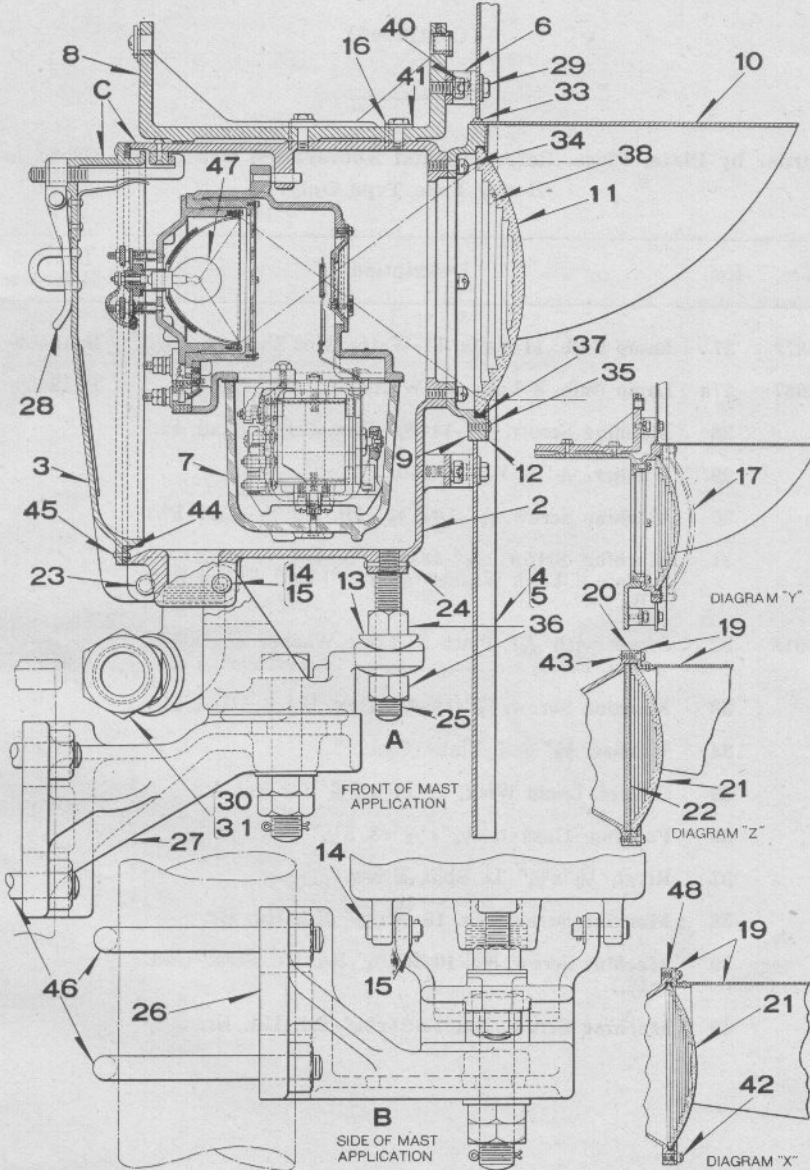


UNION SWITCH & SIGNAL COMPANY



SEARCHLIGHT SIGNAL UNIT FOR MOUNTING TO THE SIDE OR FRONT OF MAST

UNION SWITCH & SIGNAL COMPANY

THREE-POSITION COLOR LIGHT SEARCHLIGHT SIGNAL

DETAIL PARTS

D. C. SEARCHLIGHT SIGNAL UNIT

Unless otherwise specified, Relays will be furnished with Mechanism having right hand roundel Yellow, middle roundel Red and left hand roundel Green (approaching the signal) with Field Coil for 6-volt minimum and 8-volt maximum and Armature Coil for 6½-volt minimum and 8-volt maximum operation.

Voltage of lamps must be specified. (Single contact 8-volt, 10-watt or 11-volt, 11-watt lamps are usually employed, but other special lamps may be furnished).

Order by Plate, Piece, Reference and Abbreviated Description Given in Heavy Face Type Only.

Piece	Ref.	Description	Drawing Reference
	A	D.C. Searchlight Signal 8¾" Lens as shown with Relay without Contacts, Background, Lamp Bulb (Specify Voltage) and U-Bolts for 5" Casing (Inc. 1-Ac, 1-4, 1-7b, 2-46 and 1-47) For front at top of mast Application.....	C-9104-3
	Aa	D.C. Searchlight Signal 8¾" Lens as shown with Relay without Contacts, Background, Lamp Bulb (Specify Voltage) and U-Bolts for 5" Pipe (Inc. 1-Ac, 1-4, 1-7b, 2-46a and 1-47) For front at top of Mast Application.....	C-9104-3
	Ab	D.C. Searchlight Signal 8¾" Lens as shown with Relay without Contacts, Background, Lamp Bulb (Specify Voltage) and U-Bolts for 6" Pipe (Inc. 1-Ac, 1-4, 1-7b, 2-46b and 1-47) For front at top of Mast Application.....	C-9104-3
147521	Ac	D.C. Searchlight Signal with 8¾" Lens as shown (Without Relay, Background and U-Bolts).....	C-9104-3
145316	B	D.C. Searchlight Signal 10½" Lens per Diagram "X" with Relay with Contacts, Background, Lamp Bulb (Specify Voltage) and U-Bolts for 5" Casing (Inc. 1-Bn, 1-5, 1-7, 2-46 and 1-47) For side of Mast Application.....	C-9104-2
145316	Ba	D.C. Searchlight Signal 10½" Lens per Diagram "X" with Relay with Contacts, Background, Lamp Bulb (Specify Voltage) and U-Bolts for 5" Pipe (Inc. 1-Bn, 1-5, 1-7, 2-46a and 1-47) For side of Mast Application.....	C-9104-2
145316	Bb	D.C. Searchlight Signal 10½" Lens per Diagram "X" with Relay with Contacts, Background, Lamp Bulb (Specify Voltage) and U-Bolts for 6" Pipe (Inc. 1-Bn, 1-5, 1-7, 2-46b and 1-47) For side of Mast Application.....	C-9104-2

UNION SWITCH & SIGNAL COMPANY

THREE-POSITION COLOR LIGHT SEARCHLIGHT SIGNAL

DETAIL PARTS

D. C. SEARCHLIGHT SIGNAL UNIT

(Continued)

Order by Plate, Piece, Reference and Abbreviated Description Given in Heavy Face Type Only.

Piece	Ref.	Description	Drawing Reference
145415	Bc	D.C. Searchlight Signal 8 ³ / ₈ " Lens per Diagram "Y" with Relay with Contacts, Background, Lamp Bulb (Specify Voltage) and U-Bolts for 5" Casing (Inc. 1-Bp, 1-4, 1-7a, 2-46 and 1-47) For side of Mast Application.....	C-9104-2
145415	Bd	D.C. Searchlight Signal 8 ³ / ₈ " Lens per Diagram "Y" with Relay with Contacts, Background, Lamp Bulb (Specify Voltage) and U-Bolts for 5" Pipe (Inc. 1-Bp, 1-4, 1-7a, 2-46a and 1-47) For side of Mast Application.....	C-9104-2
145415	Be	D.C. Searchlight Signal 8 ³ / ₈ " Lens per Diagram "Y" with Relay with Contacts, Background, Lamp Bulb (Specify Voltage) and U-Bolts for 6" Pipe (Inc. 1-Bp, 1-4, 1-7a, 2-46b and 1-47) For side of Mast Application.....	C-9104-2
150401	Bf	D.C. Searchlight Signal 10 ¹ / ₂ " Lens per Diagram "Z" with Flat Deflecting Prism Roundel Ref. 22, Relay with Contacts, Background, Lamp Bulb (Specify Voltage) and U-Bolts for 5" Casing (Inc. 1-Br, 1-5, 1-7, 2-46 and 1-47) For side of Mast Application.....	C-9104-2
150401	Bg	D.C. Searchlight Signal 10 ¹ / ₂ " Lens per Diagram "Z" with Flat Deflecting Prism Roundel Ref. 22, Relay with Contacts, Background, Lamp Bulb (Specify Voltage) and U-Bolts for 5" Pipe (Inc. 1-Br, 1-5, 1-7, 2-46a and 1-47) For side of Mast Application.....	C-9104-2
150401	Bh	D.C. Searchlight Signal 10 ¹ / ₂ " Lens per Diagram "Z" with Flat Deflecting Prism Roundel Ref. 22, Relay with Contacts, Background, Lamp Bulb (Specify Voltage) and U-Bolts for 6" Pipe (Inc. 1-Br, 1-5, 1-7, 2-46b and 1-47) For side of Mast Application.....	C-9104-2

UNION SWITCH & SIGNAL COMPANY

THREE-POSITION COLOR LIGHT SEARCHLIGHT SIGNAL

DETAIL PARTS

D. C. SEARCHLIGHT SIGNAL UNIT

(Continued)

Order by Plate, Piece, Reference and Abbreviated Description Given in Heavy Face Type Only.

Piece	Ref.	Description	Drawing Reference
150171	Bj	D.C. Searchlight Signal 8 $\frac{3}{8}$ " Lens per Diagram "Y" with Relay with Contacts, Background, Lamp Bulb (Specify Voltage) and U-Bolts for 5" Casing Inc. 1-Bq, 1-4, 1-7a, 2-46 and 1-47) For side of Mast Application.....	C-9104-2
150171	Bk	D.C. Searchlight Signal 8 $\frac{3}{8}$ " Lens per Diagram "Y" with Relay with Contacts, Background, Lamp Bulb (Specify Voltage) and U-Bolts for 5" Pipe (Inc. 1-Bq, 1-4, 1-7a, 2-46a and 1-47) For side of Mast Application.....	C-9104-2
150171	Bm	D.C. Searchlight Signal 8 $\frac{3}{8}$ " Lens per Diagram "Y" with Relay with Contacts, Background, Lamp Bulb (Specify Voltage) and U-Bolts for 6" Pipe (Inc. 1-Bq, 1-4, 1-7a, 2-46b and 1-47) For side of Mast Application.....	C-9104-2
144476	Bn	D.C. Searchlight Signal 10 $\frac{1}{2}$ " Lens per Diagram "X" and without Relay, Background or U-Bolts (With Sticker of Wiring diagram showing Terminal Board Ref. 8, Plate B-2835).....	C-9104-2
144477	Bp	D.C. Searchlight Signal 8 $\frac{3}{8}$ " Lens per Diagram "Y" and without Relay, Background or U-Bolts (With Sticker of Wiring diagram showing Terminal Board Ref. 8, Plate B-2835).....	C-9104-2
150170	Bq	D.C. Searchlight Signal 8 $\frac{3}{8}$ " Lens per Diagram "Y" and without Relay, Background or U-Bolts (With Sticker of Wiring diagram showing Terminal Board Ref. 7, Plate B-2835).....	C-9104-2
150400	Br	D.C. Searchlight Signal 10 $\frac{1}{2}$ " Lens per Diagram "Z" and 30° Flat Deflecting Prism Roundel Glass and without Relay, Background or U-Bolts (With Sticker of Wiring diagram showing Terminal Board Ref. 8, Plate B-2835).....	C-9104-2
145315	C	Case and Door with Latch for D.C. Searchlight Signal.....	C-9104-2

UNION SWITCH & SIGNAL COMPANY

THREE-POSITION COLOR LIGHT SEARCHLIGHT SIGNAL
 DETAIL PARTS
 D. C. SEARCHLIGHT SIGNAL UNIT

(Continued)

Order by Plate, Piece, Reference and Abbreviated Description Given in Heavy Face Type Only.

Piece	Ref.	Description	Drawing Reference
144203	2	Case	C-9105-1
144204	3	Door	C-9105-2
144459	4	Background for Signals having 8 $\frac{3}{8}$ " Diam. Lens ..	C-9105-6
144458	5	Background for Signals having 10 $\frac{1}{2}$ " Diam. Lens	C-9105-6
146805	6	Support	9999-520
143574	7	Relay (With Contacts) (For details refer to Ref. A, Plate B-2835)	C-9157-2
150169	7a	Relay (With Contacts) (For details refer to Ref. Ad, Plate B-2835)	C-9157-2
152853	7b	Relay (Without Contacts) (For details refer to Ref. A, Plate B-2840)	C-9157-2
152843	8	Sight Bracket	C-9105-11
144456	9	Lens Housing	C-9105-6
65898	10	Lens Hood	C-8842-15
146717	11	Lens, 8 $\frac{3}{8}$ " Diam. 5" Focus with 40° Center Deflecting Prism	B-8276-41
71187	12	Lens Ring	7436-106
146404	13	Washer	8065-201
144627	14	Pin with $\frac{1}{8}$ " x $\frac{3}{4}$ " Cotter	B-10212-1
48750	15	Washer used with Ref. 14	7826-117
38851	16	Pin	8097-423
90897	17	Deflecting Prism Cover Glass (10° Spread one direction) Used with 8 $\frac{3}{8}$ " lens	C-8901-8
90898	17a	Deflecting Prism Cover Glass (20° Spread one direction) Used with 8 $\frac{3}{8}$ " Lens	C-8901-8

UNION SWITCH & SIGNAL COMPANY

THREE-POSITION COLOR LIGHT SEARCHLIGHT SIGNAL
 DETAIL PARTS
 D. C. SEARCHLIGHT SIGNAL UNIT

(Continued)

Order by Plate, Piece, Reference and Abbreviated Description Given in Heavy Face Type Only.

Piece	Ref.	Description	Drawing Reference
65018	18	Screw with $\frac{5}{16}$ " Plain S. Lock Washer ($\frac{3}{32}$ "x $\frac{1}{8}$ ") Cad. Pl. for attaching Relay to Case (Not Shown)	8190-312
405011	19	Lens Ring with Hood.	
410301	20	Spacer.	
148165	21	Lens (Half Toric Optical) 10 $\frac{1}{2}$ " Diam. 6" Focus..	B-8276-44
148611	21a	Lens (Half Toric Spreadlite) 10 $\frac{1}{2}$ " Diam. 6" Focus	B-8276-45
150459	22	Flat Deflecting Prism Roundel 30° Spread, 15° each direction 10 $\frac{1}{2}$ " Diam.....	B-8276-48
137853	23	Pin.....	B-10211-1
11992	24	Pin.....	8097-92
410528	25	Stud.	
144207	26	Support Bracket for side of Mast Application (Inc. Bolts, Washers and Nuts).....	C-9105-5
147517	27	Support Bracket for Front of Mast Application (Inc. Bolts, Washers and Nuts).....	C-9105-9
	28	Hasp with Latch Nut, Latch Lock, Staple and Rivet.	
	29	Machine Screw, $\frac{5}{16}$ "-18x $\frac{3}{4}$ " Hex. Hd. S. with $\frac{5}{16}$ " S. Plate Washer, $\frac{5}{16}$ " Hex. Nut and $\frac{5}{16}$ " Plain S. Lock Washer ($\frac{3}{32}$ "x $\frac{1}{8}$ ").	
	30	Street Ell, 1 $\frac{1}{2}$ " Galv.	
	31	Street Ell, 1 $\frac{1}{2}$ " 45° Galv.	
	32	Box Connector, 1 $\frac{1}{2}$ " M. I. Galv. for B (Not Shown)	
	33	Machine Screw, No. 10-30x $\frac{1}{4}$ " Rd. Hd. S. (Cad. Pl.).	
	34	Machine Screw, $\frac{5}{16}$ "-18x1" Fil. Hd. S. with $\frac{5}{16}$ " Plain S. Lock Washer ($\frac{3}{32}$ "x $\frac{1}{8}$ ") Cad. Pl.	

UNION SWITCH & SIGNAL COMPANY

THREE-POSITION COLOR LIGHT SEARCHLIGHT SIGNAL

DETAIL PARTS

D. C. SEARCHLIGHT SIGNAL UNIT

(Continued)

Order by Plate, Piece, Reference and Abbreviated Description Given in Heavy Face Type Only.

Piece	Ref.	Description	Drawing Reference
	35	Machine Screw, No. 10-30x $\frac{3}{8}$ " Rd. Hd. Br.	
	36	Hex. Nut, $\frac{3}{4}$ " Std.	
	37	Gasket, $\frac{1}{16}$ "x1"x2' 6" Lamp Wick.	
	37a	Gasket, $\frac{1}{16}$ "x1"x3' 0" Lamp Wick.	
	38	Machine Screw, No. 14-24x $\frac{3}{8}$ " Rd. Hd. Br.	
	39	Machine Screw, No. 14-24x $\frac{5}{8}$ " Rd. Hd. Br. For Deflecting Unit (Not shown)	
	40	Machine Screw, $\frac{3}{8}$ "-16x $\frac{3}{4}$ " Hex. Hd. S. with $\frac{3}{8}$ " Plain S. Lock Washer ($\frac{5}{32}$ "x $\frac{1}{16}$ ")	
	41	Washer, $\frac{5}{16}$ " Std. Plate.	
	42	Machine Screw, $\frac{3}{8}$ "-16x1" Fil. Hd. S. (Cad. Pl.) for attaching Ref. 19 to 48.	
	43	Machine Screw, $\frac{3}{8}$ "-16x1 $\frac{3}{8}$ " Fil. Hd. S. (Cad. Pl.)	
	44	Packing Gasket, $\frac{1}{4}$ "x $\frac{1}{2}$ "x3' 3 $\frac{1}{2}$ ".	
	45	Rivet, $\frac{1}{8}$ "x $\frac{3}{4}$ " Split Br.	
97657	46	U-Bolt with $\frac{3}{4}$ " Hex. Nuts for attaching Signal to 5" Casing.....	8782-66
43931	46a	U-Bolt with $\frac{3}{4}$ " Hex. Nuts for attaching Signal to 5" Pipe.....	8782-66
44199	46b	U-Bolt with $\frac{3}{4}$ " Hex. Nuts for attaching Signal to 6" Pipe.....	8782-69
145877	47	Lamp Bulb, 11-Volt, 11-Watt.....	B-12409-18
142967	47a	Lamp Bulb, 8-Volt, 10-Watt.....	B-12409-18
144455	48	Lens Housing.....	C-9105-6