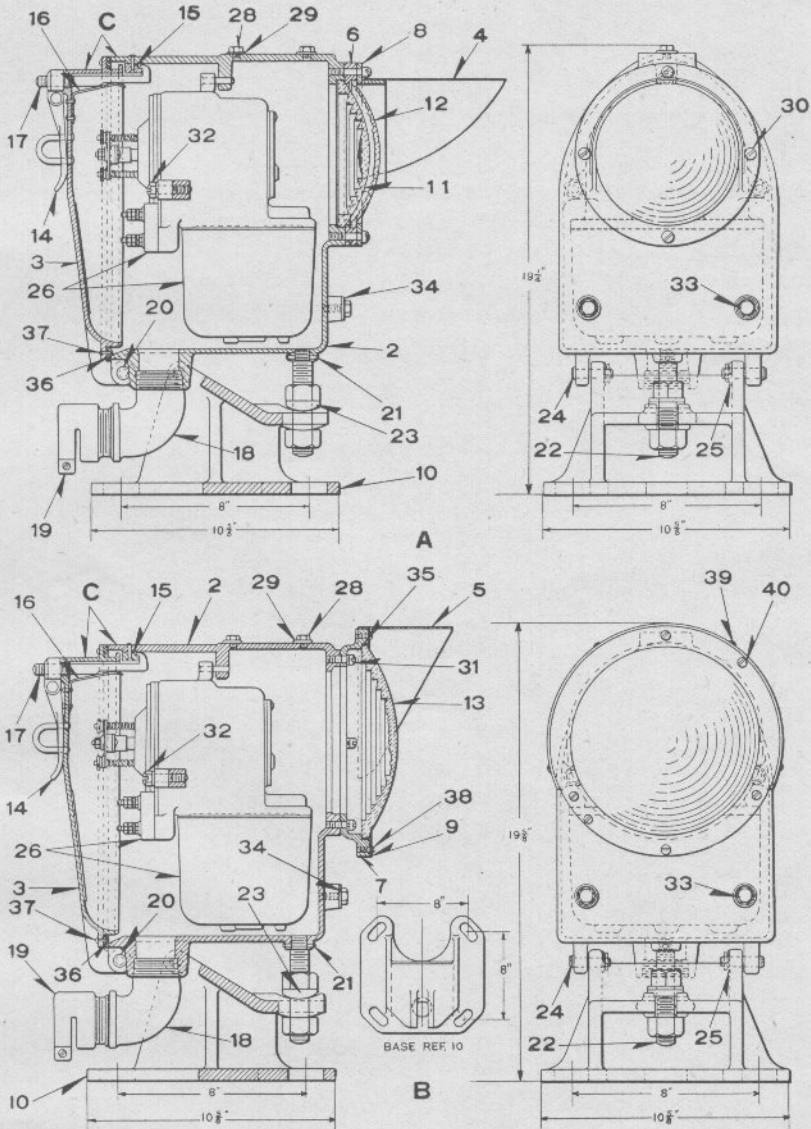


UNION SWITCH & SIGNAL COMPANY



SEARCHLIGHT DWARF SIGNALS

UNION SWITCH & SIGNAL COMPANY

THREE-POSITION, SEARCHLIGHT DWARF SIGNALS

Unless otherwise specified, signals will be furnished with Mechanism having right hand roundel Yellow, middle roundel Red and left hand roundel Green (approaching the signal) with Field Coil for 6-volt minimum and 8-volt maximum and Armature Coil for 6½-volt minimum and 8-volt maximum operation. If signals of different dimensions than those shown are desired orders should so state.

Voltage of lamps must be specified. (Single contact 8-volt, 10-watt or 11-volt, 11-watt lamps are usually employed, but other special lamps may be furnished).

Order by Plate, Piece, Reference and Abbreviated Description Given in Heavy Face Type Only.

Piece	Ref.	Description	Drawing Reference
145318	A	D.C. Searchlight Dwarf Signal with 6¾" Lens and Relay with Contacts, (Inc. 1-Ab, 1-26, 1-27 and 2-32) (Without Foundation Bolts).....	C-9104-1
151095	Aa	D.C. Searchlight Dwarf Signal with 6¾" Lens and Relay with Contacts, (Inc. 1-Ac, 1-26a, 1-27 and 2-32) (Without Foundation Bolts).....	C-9104-1
145317	Ab	D.C. Searchlight Dwarf Signal with 6¾" Lens, (Without Relay).....	C-9104-1
151094	Ac	D.C. Searchlight Dwarf Signal with 6¾" Lens, (Without Relay).....	C-9104-1
151852	B	D.C. Searchlight Dwarf Signal with 8¾" Lens and Relay with Contacts, (Inc. 1-Ba, 1-27, and 2-32) (Without Foundation Bolts).....	C-9104-4
151851	Ba	D.C. Searchlight Dwarf Signal with 8¾" Lens, (Without Relay) for Ref. B.....	C-9104-4
144202	C	Case and Door with Latch, for Refs. A, Aa and B..	C-9104-1
144203	2	Case only.....	C-9105-1
144204	3	Door only.....	C-9105-2
410522	4	Hood for Refs. Ab and Ac.	
151850	5	Hood for Ref. Ba.....	C-9105-10
410520	6	Lens Housing for Refs. Ab and Ac.	
144456	7	Lens Housing for Ref. Ba.....	C-9105-6
410519	8	Hood Ring for Refs. Ab and Ac.	
71187	9	Hood Ring for Ref. Ba.....	7436-106

UNION SWITCH & SIGNAL COMPANY

THREE-POSITION, SEARCHLIGHT DWARF SIGNALS

(Continued)

Order by Plate, Piece, Reference and Abbreviated Description Given in Heavy Face Type Only.

Piece	Ref.	Description	Drawing Reference
405049	10	Base.	
68507	11	Lens 6 $\frac{3}{8}$ " Diam. 3 $\frac{3}{4}$ " Focus for Refs. Ab and Ac..	B-8276-30
136393	12	Lens 6 $\frac{3}{8}$ " Diam. 20° Spread for Refs. Ab and Ac..	B-8276-35
146717	13	Lens 8 $\frac{3}{8}$ " Diam. 5" Focus with 40° Center Deflecting Prism for Ref. Ba.....	B-8276-41
	14	Hasp, with Latch Nut, Latch Lock, Staple and Rivet.	
410318	14a	Hasp only.	
410521	15	Latch Block with Rivets, $\frac{3}{16}$ "x $\frac{3}{4}$ " Rd. Hd. I.	
410529	16	Latch Spring with Rivets, $\frac{1}{8}$ "x $\frac{9}{16}$ " Rd. Hd. I.	
410527	17	Latch Lock.	
	18	Street Ell, 1 $\frac{1}{2}$ " Galv.	
	19	Panel Box Connector, 1 $\frac{1}{2}$ " M. I. Galv.	
137853	20	Pin.....	B-10211-1
11992	21	Pin.....	8097-92
413239	22	Stud with Hex. Nuts (Cad. Pl.).....	410528
146404	23	Washer.....	8065-201
144627	24	Pin with $\frac{1}{8}$ "x $\frac{3}{4}$ " Cotter (Cad. Pl.).....	B-10212-1
48750	25	Washer.....	7826-117
143574	26	Relay with Contacts (For details refer to Ref. A, Plate B-2835) (Without Lamp Bulb) for Refs. A and B.....	C-9157-2
150169	26a	Relay with Contacts (For details refer to Ref. Ad, Plate B-2835) (Without Lamp Bulb) for Ref. Aa	C-9157-2

UNION SWITCH & SIGNAL COMPANY

THREE-POSITION, SEARCHLIGHT DWARF SIGNALS

(Continued)

Order by Plate, Piece, Reference and Abbreviated Description Given in Heavy Face Type Only.

Piece	Ref.	Description	Drawing Reference
145877	27	Lamp Bulb, 11-Volts, 11-Watts (Not Shown).....	B-12409-18
142967	27a	Lamp Bulb, 8-Volts, 10-Watts.....	B-12409-18
	28	Machine Screw, $\frac{5}{16}$ "-18x $\frac{3}{8}$ " Hex. Hd. S. (Cad. Pl.)	
	29	Washer, $\frac{5}{16}$ " S. Plate (Cad. Pl.)	
	30	Machine Screw, $\frac{5}{16}$ "-18x1 $\frac{3}{8}$ " Fil. Hd. S. (Cad. Pl.)	
	31	Machine Screw, $\frac{5}{16}$ "-18x1" Fil. Hd. S. with $\frac{5}{16}$ " Plain S. Lock Washer ( $\frac{3}{32}$ "x $\frac{1}{8}$ " Cad. Pl. for Ref. Ba.	
65018	32	Screw with $\frac{5}{16}$ " Plain S. Lock Washer ( $\frac{1}{8}$ "x $\frac{3}{32}$ " Cad. Pl.).....	8190-312
	33	Machine Screw, $\frac{3}{8}$ "-16x $\frac{3}{4}$ " Hex. Hd. S. (Cad. Pl.)	
	34	Washer, $\frac{3}{8}$ " Std. Plate (Cad. Pl.)	
	35	Gasket, Lamp Wick, $\frac{1}{16}$ "x1"x2' 6" for Ref. Ba	
	36	Packing Gasket, $\frac{1}{4}$ "x $\frac{1}{2}$ "x3' 3 $\frac{1}{2}$ "	
	37	Rivet, $\frac{1}{8}$ "x $\frac{3}{4}$ " L. Split Brass.	
	38	Machine Screw, No. 10-30x $\frac{3}{8}$ " Rd. Hd. Br.	
	39	Machine Screw, No. 10-30x $\frac{1}{4}$ " Rd. Hd. Steel (Cad. Pl.).	
	40	Machine Screw, No. 14-24x $\frac{3}{8}$ " Rd. Hd. Br.	