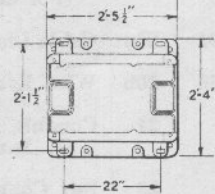
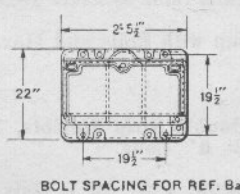
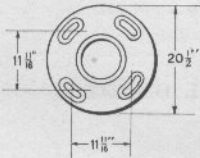
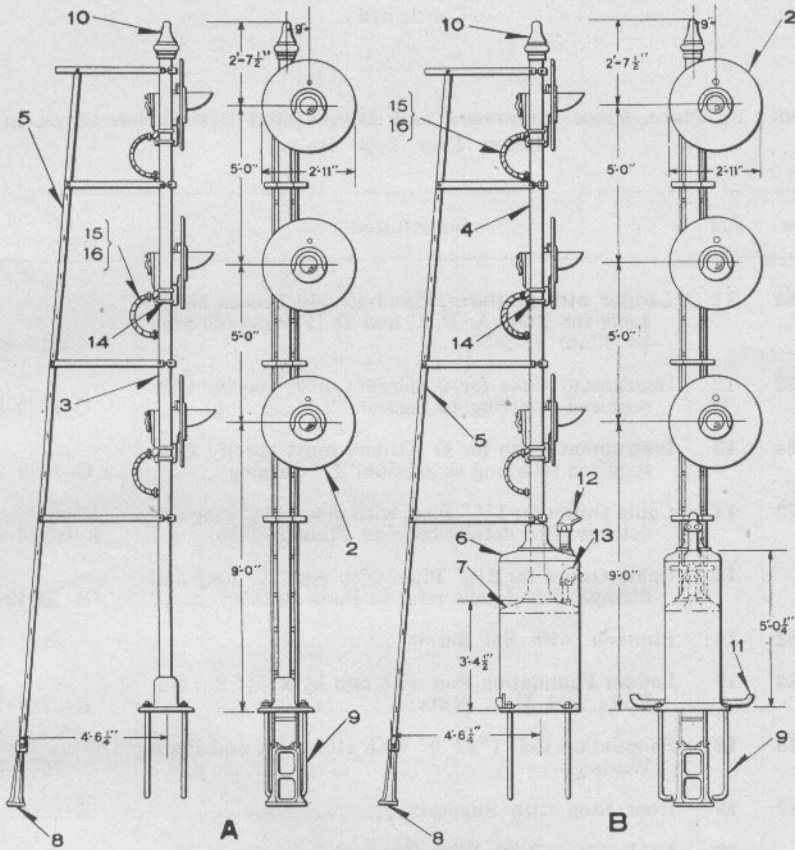


UNION SWITCH & SIGNAL COMPANY



THREE-UNIT COLOR LIGHT SEARCHLIGHT GROUND SIGNALS

UNION SWITCH & SIGNAL COMPANY

**THREE-UNIT, THREE-POSITION COLOR LIGHT SEARCHLIGHT
GROUND SIGNALS**

Unless otherwise specified, signals will be furnished with Mechanism having right hand roundel Yellow, middle roundel Red and left hand roundel Green (approaching the signal) with Field Coil for 6-volt minimum and 8-volt maximum and Armature Coil for 6½-volt minimum and 8-volt maximum operation. If signals of different dimensions than those shown are desired orders should so state.

Voltage of lamps must be specified. (Single contact 8-volt, 10-watt or 11-volt, 11-watt lamps are usually employed, but other special lamps may be furnished).

Order by Plate, Piece, Reference and Abbreviated Description Given in Heavy Face Type Only.

Piece	Ref.	Description	Drawing Reference
150908	A	Three-Unit, Color Light Searchlight Ground Signal, with 8¾" Lens, Ladder, 5" Pipe Mast, Foundation Bolts and Relay with Contacts.....	B-12609-11
150907	B	Three-Unit, Color Light Searchlight Ground Signal, with 8¾" Lens, Ladder, 5" Pipe Mast, Instrument Case Ref. 6, Foundation Bolts and Relay with Contacts.....	B-12609-10
	Ba	Three-Unit, Color Light Searchlight Ground Signal, with 8¾" Lens, Ladder, 5" Pipe Mast, Instrument Case Ref. 7, Foundation Bolts and Relay with Contacts.....	B-12609
150171	2	D.C. Color Light Searchlight Signal with Relay with Contacts, Background and U-Bolts for attaching to 5" Pipe (For details refer to Ref. Bk, Plate B-2825).....	C-9104-2
150171	2a	D.C. Color Light Searchlight Signal with Relay with Contacts, Background and U-Bolts for attaching to 5" Casing (For details refer to Ref. Bj, Plate B-2825).....	C-9104-2
150171	2b	D.C. Color Light Searchlight Signal with Relay with Contacts, Background and U-Bolts for attaching to 6" Pipe (For details refer to Ref. Bm, Plate B-2825).....	C-9104-2
150901	3	Mast, 5" Pipe, with Base, 20' 11½" from Bottom of Base to Top of Mast (For details refer to Plate B-2850) for Ref. A.....	B-9893-159
150900	4	Mast, 5" Pipe, with Base, 15' 10½" from Bottom of Base to Top of Mast (For details refer to Plate B-2850) for Ref. B.....	B-9893-159
	4a	Mast, 5" Pipe, with Base, 17' 6¼" from Bottom of Base to Top of Mast (For details refer to Plate B-2850) for Ref. Ba.....	B-9893

UNION SWITCH & SIGNAL COMPANY

THREE-UNIT, THREE-POSITION COLOR LIGHT SEARCHLIGHT
GROUND SIGNALS

(Continued)

Order by Plate, Piece, Reference and Abbreviated Description Given in
Heavy Face Type Only.

Piece	Ref.	Description	Drawing Reference
150943	5	Ladder with Platform, Handrail and Braces 21' 3" Long, for A, B and Ba (For details refer to Plate B-2855).....	B-10313-433
150392	6	Instrument Case for B (Orders must specify Case required referring to Section "L" Catalog).....	C-7589-38
	7	Instrument Case for Ba (Orders must specify Case required referring to Section "L" Catalog)....	C-7589
62563	8	Ladder Foundation Pier with two 1/2"x1 1/4" Sq. Hd. Bolts and Hex. Nuts.....	B-8848-10
10276	9	Foundation Bolt, 1"x3' 0" with Hex. Nut and Plate Washer.....	7913-54
137792	10	Pinnacle with Set Screw.....	8121-44
120743	11	Door Stop with Supports for Ref. B.....	B-12507-1
	12	Cable Outlet for 2 1/2" Pipe with Pipe 12" long and fittings (For details refer to Plate B-2850) for Ref. B.....	B-10342-8
152573	13	Cable Outlet for 1 1/2" Pipe with Pipe 16 1/2" long and fittings (For details refer to Plate B-2850) for Ref. Ba.....	B-10342-46
97657	14	U-Bolt, for 5" Casing with 3/4" Hex. Nuts.....	8782-66
43931	14a	U-Bolt, for 5" Pipe with 3/4" Hex. Nuts.....	8782-66
44199	14b	U-Bolt, for 6" Pipe with 3/4" Hex. Nuts.....	8782-69
	15	Conduit, Double Strip Flexible, 1 1/2" I. D.x2.060" O. D.x3' 0" Long.	
	16	Box Connector, 1 1/2" M. I. Galv.	