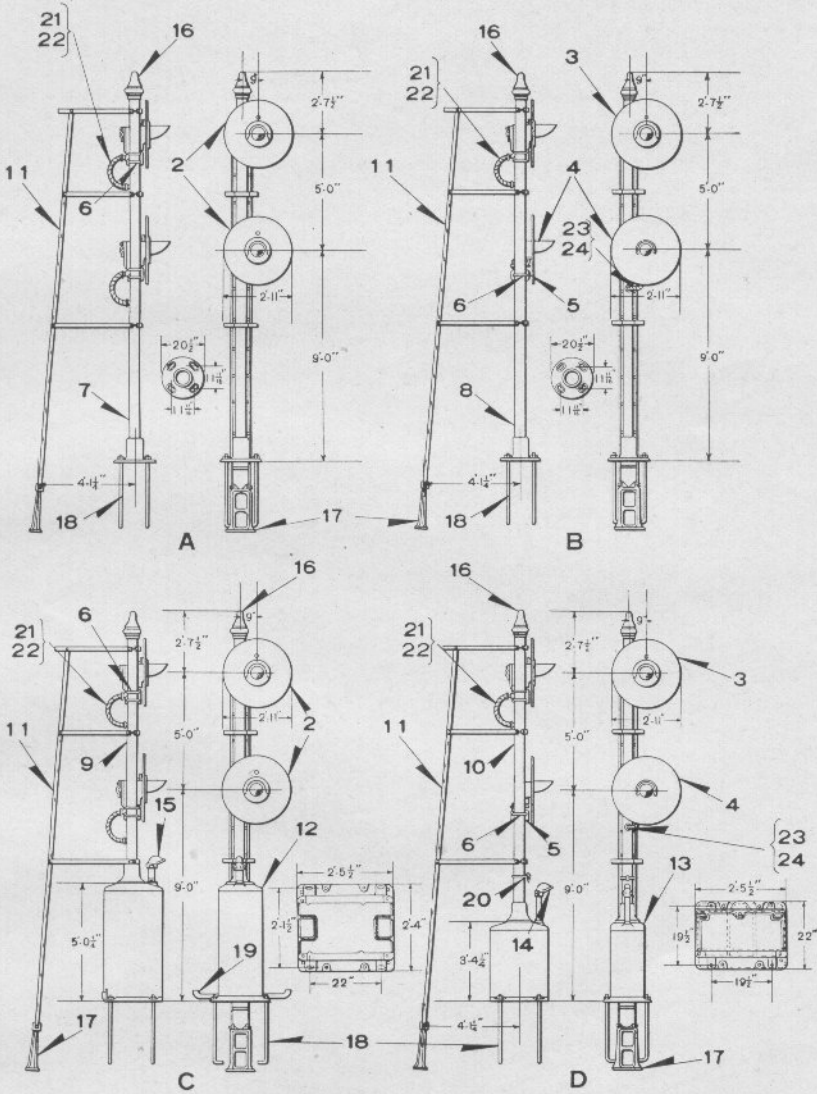


UNION SWITCH & SIGNAL COMPANY



TWO-UNIT COLOR LIGHT SEARCHLIGHT GROUND SIGNALS

UNION SWITCH & SIGNAL COMPANY

**TWO-UNIT, THREE-POSITION COLOR LIGHT SEARCHLIGHT
GROUND SIGNALS**

Unless otherwise specified, signals will be furnished with Mechanism having right hand roundel Yellow, middle roundel Red and left hand roundel Green (approaching the signal) with Field Coil for 6-volt minimum and 8-volt maximum and Armature Coil for 6½-volt minimum and 8-volt maximum operation. If signals of different dimensions than those shown are desired orders should so state.

Voltage of lamps must be specified. (Single contact 8-volt, 10-watt or 11-volt, 11-watt lamps are usually employed, but other special lamps may be furnished).

Order by Plate, Piece, Reference and Abbreviated Description Given in Heavy Face Type Only.

Piece	Ref.	Description	Drawing Reference
150906	A	Two-Unit, Color Light Searchlight Ground Signal with 8¾" Lens, Ladder, 5" Pipe Mast, Foundation Bolts and Relay with Contacts.....	B-12609-9
151061	B	Two-Unit, (Bottom Unit Inoperative) Color Light Searchlight Ground Signal with 8¾" Lens, Ladder, 5" Pipe Mast, Foundation Bolts and Relay with Contacts.....	B-12609-13
150905	C	Two-Unit, Color Light Searchlight Ground Signal with 8¾" Lens, Ladder, 5" Pipe Mast, Instrument Case, Foundation Bolts and Relay with Contacts.....	B-12609-8
151060	D	Two-Unit, (Bottom Unit Inoperative) Color Light Searchlight Ground Signal with 8¾" Lens, Ladder, 5" Pipe Mast, Instrument Case, Foundation Bolts and Relay with Contacts.....	B-12609-12
150171	2	D. C. Color Light Searchlight Signal with Relay with Contacts, Background and U-Bolts for attaching to 5" Pipe (For details refer to Ref. Bk, Plate B-2825).....	C-9104-2
150171	2a	D. C. Color Light Searchlight Signal with Relay with Contacts, Background and U-Bolts for attaching to 5" Casing (For details refer to Ref. Bj, Plate B-2825).....	C-9104-2
150171	2b	D. C. Color Light Searchlight Signal with Relay with Contacts, Background and U-Bolts for attaching to 6" Pipe (For details refer to Ref. Bm, Plate B-2825).....	C-9104-2
145415	3	D. C. Color Light Searchlight Signal with Relay with Contacts, Background and U-Bolts for attaching to 5" Pipe (For details refer to Ref. Bd, Plate B-2825).....	C-9104-2

UNION SWITCH & SIGNAL COMPANY

TWO-UNIT, THREE-POSITION COLOR LIGHT SEARCHLIGHT
GROUND SIGNALS

(Continued)

Order by Plate, Piece, Reference and Abbreviated Description Given in
Heavy Face Type Only.

Piece	Ref.	Description	Drawing Reference
145415	3a	D. C. Color Light Searchlight Signal with Relay with Contacts, Background and U-Bolts for attaching to 5" Casing (For details refer to Ref. Bc, Plate B-2825).....	C-9104-2
145415	3b	D. C. Color Light Searchlight Signal with Relay with Contacts, Background and U-Bolts for attaching to 6" Pipe (For details refer to Ref. Be, Plate B-2825).....	C-9104-2
	4	Inoperative Light Signal One Position (Red) complete with Hood and Background, without Bracket (For details refer to Ref. Aa, Plate B-2845).....	C-8965-33
151059	4a	Inoperative Light Signal One Position (Red) without Hood, Background and Bracket (For details refer to Ref. Aa, Plate B-2845).....	C-8965-33
149919	5	Supporting Bracket for 5" and 6" pipe.....	C-8964-65
97657	6	U-Bolt, for 5" Casing with 3/4" Hex. Nuts.....	8782-66
43931	6a	U-Bolt, for 5" Pipe with 3/4" Hex. Nuts.....	8782-66
44199	6b	U-Bolt, for 6" Pipe with 3/4" Hex. Nuts.....	8782-69
150883	7	Mast, 5" Pipe, with Base, 15' 10 1/2" from Bottom of Base to Top of Mast (For details refer to Plate B-2850).....	B-9893-155
149996	8	Mast, 5" Pipe, with Base, 15' 10 1/2" from Bottom of Base to Top of Mast (For details refer to Plate B-2850).....	B-9893-155
150882	9	Mast, 5" Pipe, with Base, 10' 10 1/2" from Bottom of Base to Top of Mast (For details refer to Plate B-2850).....	B-9893-154
150121	10	Mast, 5" Pipe, with Base, 12' 6 1/2" from Bottom of Base to Top of Mast (For details refer to Plate B-2850).....	B-9893-154

UNION SWITCH & SIGNAL COMPANY

TWO-UNIT, THREE-POSITION COLOR LIGHT SEARCHLIGHT
GROUND SIGNALS

(Continued)

Order by Plate, Piece, Reference and Abbreviated Description Given in
Heavy Face Type Only.

Piece	Ref.	Description	Drawing Reference
149962	11	Ladder with Platform, Handrail and Braces 16' 3" Long for Refs. A, B, C and D (For details refer to Plate B-2855).....	B-10313-428
150392	12	Instrument Case for C (Orders must specify Case required referring to Section "L" Catalog).....	C-7589-38
125284	13	Instrument Case for D (Orders must specify Case required referring to Section "L" Catalog).....	C-7589-24
152573	14	Cable Outlet for 1½" Pipe, with pipe 16½" long and fittings (For details refer to Plate B-2850).....	B-10342-46
	15	Cable Outlet for 2½" Pipe, with pipe 12" long and fittings (For details refer to Plate B-2850).....	B-10342-8
137792	16	Pinnacle with Set Screw.....	8121-44
62563	17	Ladder Foundation Pier with two ½"x1¼" Sq. Hd. Bolts and Hex. Nuts.....	B-8848-10
10276	18	Foundation Bolt 1"x3' 0" with Hex. Nut and Plate Washer.....	7913-54
120743	19	Door Stop with Supports.....	B-12507-1
	20	Cable Clamp with Wire Eye and Bolts for 5" Pipe (For details refer to Plate B-2850).....	B-7501-8
85591	20a	Cable Clamp with Bolts and Hex. Nuts.....	B-7501-8
3166	20b	Wire Eye.....	7735-2
	21	Conduit, Double Strip Flexible, 1½" I. D.x2.060" O. D.x3' 0" Long.	
	22	Box Connector, 1½" M. I. Galv.	
	23	Conduit, Double Strip Flexible, 1¾" I. D.x1.148" O. D.x2' 8" Long.	
	24	Box Connector, ¾" M. I. Galv.	