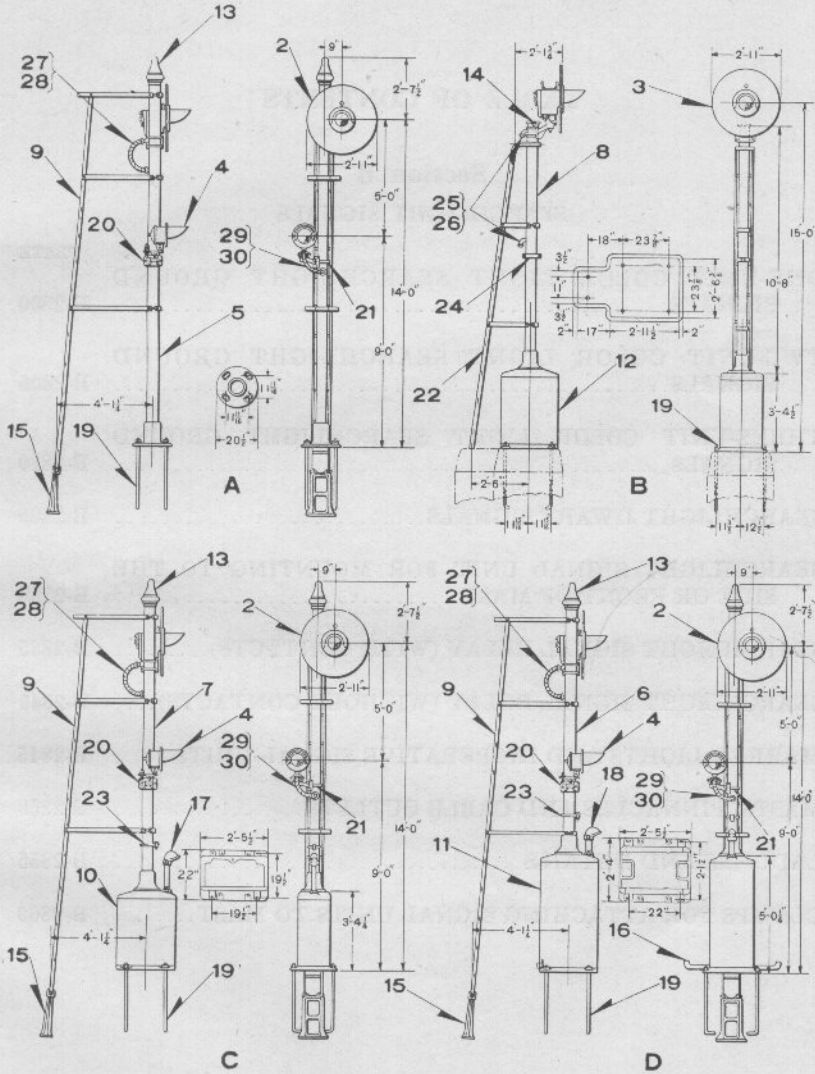


UNION SWITCH & SIGNAL COMPANY



ONE-UNIT COLOR LIGHT SEARCHLIGHT GROUND SIGNALS

UNION SWITCH & SIGNAL COMPANY

ONE-UNIT, THREE-POSITION COLOR LIGHT SEARCHLIGHT
GROUND SIGNALS

Unless otherwise specified, signals will be furnished with Mechanism having right hand roundel Yellow, middle roundel Red and left hand roundel Green (approaching the signal) with Field Coil for 6-volt minimum and 8-volt maximum and Armature Coil for 6½-volt minimum and 8-volt maximum operation. If signals of different dimensions than those shown are desired orders should so state.

Voltage of lamps must be specified. (Single contact 8-volt, 10-watt or 11-volt, 11-watt lamps are usually employed, but other special lamps may be furnished).

Order by Plate, Piece, Reference and Abbreviated Description Given in Heavy Face Type Only.

Piece	Ref.	Description	Drawing Reference
149997	A	One-Unit, and Marker, Color Light, Searchlight Ground Signal with 8¾" Lens, Ladder, 5" Pipe Mast, Foundation Bolts and Relay with Contacts	B-12609-6
152850	B	One-Unit, Color Light, Searchlight Ground Signal with 8¾" Lens, Instrument Case, Ladder, 5" Casing, Foundation Bolts and Relay without Contacts	B-12609-14
150122	C	One-Unit, and Marker, Color Light, Searchlight Ground Signal with 8¾" Lens, Ladder, 5" Pipe Mast, Instrument Case, Cable Outlet, Foundation Bolts and Relay with Contacts	B-12609-7
149966	D	One-Unit, and Marker Color Light, Searchlight Ground Signal with 8¾" Lens, Ladder, 5" Pipe Mast, Instrument Case, Cable Outlet, Foundation Bolts and Relay with Contacts	B-12609-5
145415	2	D. C. Color Light Searchlight Signal with Relay with Contacts, Background and U-Bolts for attaching to 5" Pipe (For details refer to Ref. Bd, Plate B-2825)	C-9104-2
145415	2a	D. C. Color Light Searchlight Signal with Relay with Contacts, Background and U-Bolts for attaching to 5" Casing (For details refer to Ref. Be, Plate B-2825)	C-9104-2
145415	2b	D. C. Color Light Searchlight Signal with Relay with Contacts, Background and U-Bolts for attaching to 6" Pipe (For details refer to Ref. Be, Plate B-2825)	C-9104-2
	3	D. C. Color Light Searchlight Signal with Relay without Contacts, Background and U-Bolts for attaching to 5" Casing (For details refer to Ref. A, Plate B-2825)	C-9104-3

UNION SWITCH & SIGNAL COMPANY

ONE-UNIT, THREE-POSITION COLOR LIGHT SEARCHLIGHT
GROUND SIGNALS

(Continued)

Order by Plate, Piece, Reference and Abbreviated Description Given in
Heavy Face Type Only.

Piece	Ref.	Description	Drawing Reference
	3a	D. C. Color Light Searchlight Signal with Relay without Contacts, Background and U-Bolts for attaching to 5" Pipe (For details refer to Ref. Aa, Plate B-2825).....	C-9104-3
	3b	D. C. Color Light Searchlight Signal with Relay without Contacts, Background and U-Bolts for attaching to 6" Pipe (For details refer to Ref. Ab, Plate B-2825).....	C-9104-3
149921	4	Marker Light (Lunar White) with Hood and 12" Diam. Background (For details refer to Ref. A, Plate B-2845).....	C-8965-33
149996	5	Mast, 5" Pipe with Base, 15' 10 1/2" from Bottom of Base to Top of Mast (For details refer to Plate B-2850).....	B-9893-155
149953	6	Mast, 5" Pipe with Base, 10' 10 1/2" from Bottom of Base to Top of Mast (For details refer to Plate B-2850).....	B-9893-154
150121	7	Mast, 5" Pipe with Base, 12' 6 1/2" from Bottom of Base to Top of Mast (For details refer to Plate B-2850).....	B-9893-154
146633	8	Mast, 5" Casing with Base, 10' 8" from Bottom of Base to Top of Mast (For details refer to Plate B-2850).....	B-9893-154
149962	9	Ladder with Platform, Handrail and Braces, 16' 3" long, for Refs. A, C and D (For details refer to Plate B-2855).....	B-10313-428
152377	10	Instrument Case for C (Orders must specify Case required referring to Section "L" Catalog).....	C-7589-24
	11	Instrument Case for D (Orders must specify Case required referring to Section "L" Catalog).....	C-7589-38
152460	12	Instrument Case for B (For details refer to Plate L-1137).....	C-7589-51

UNION SWITCH & SIGNAL COMPANY

ONE-UNIT, THREE-POSITION COLOR LIGHT SEARCHLIGHT
GROUND SIGNALS

(Continued)

Order by Plate, Piece, Reference and Abbreviated Description Given in
Heavy Face Type Only.

Piece	Ref.	Description	Drawing Reference
137792	13	Pinnacle with Set Screw.....	8121-44
147427	14	Pipe Cap, with two $\frac{3}{8}$ "-16x $\frac{3}{4}$ " Hex. Hd. Tap Bolts (Cad. Pl.).....	B-9931-5
62563	15	Ladder Foundation Pier with two $\frac{1}{2}$ "x1 $\frac{1}{4}$ " Sq. Hd. Bolts and Hex. Nuts.....	B-8848-10
120743	16	Door Stop with Supports.....	B-12507-1
152373	17	Cable Outlet for 1 $\frac{1}{2}$ " Pipe, with Pipe 16 $\frac{1}{2}$ " long and fittings (For details refer to Plate B-2850)....	B-10342-46
	18	Cable Outlet for 2 $\frac{1}{2}$ " Pipe, with Pipe 12" long and fittings (For details refer to Plate B-2850).....	B-10342-8
10276	19	Foundation Bolt 1"x3' 0" with Hex. Nut and Plate Washer.....	7913-54
149919	20	Supporting Bracket for 5" and 6" pipe.....	C-8964-65
97657	21	U-Bolt for 5" Casing with $\frac{3}{4}$ " Hex. Nuts.....	8982-66
43931	21a	U-Bolt, for 5" Pipe with $\frac{3}{4}$ " Hex. Nuts.....	8782-66
44199	21b	U-Bolt, for 6" Pipe with $\frac{3}{4}$ " Hex. Nuts.....	8782-69
152944	22	Ladder with Foot, Platform, Handrail and Braces 13' 2" long for Ref. B.....	B-10313-442
	23	Cable Clamp with Wire Eye and Bolts for 5" Pipe (For details refer to Plate B-2850).....	B-7501-8
85591	23a	Cable Clamp with Bolts and Hex. Nuts.....	B-7501-8
3166	23b	Wire Eye for Refs. 23 and 24.....	7735-2
	24	Cable Clamp with Wire Eye and Bolts for 5" Casing (For details refer to Plate B-2850).....	B-7501-8
85593	24a	Cable Clamp with Bolts and Hex. Nuts.....	B-7501-8

UNION SWITCH & SIGNAL COMPANY

ONE-UNIT, THREE-POSITION COLOR LIGHT SEARCHLIGHT
GROUND SIGNALS

(Continued)

Order by Plate, Piece, Reference and Abbreviated Description Given in
Heavy Face Type Only.

Piece	Ref.	Description	Drawing Reference
153257	25	Wire Outlet, 1½" 90 M. I. (Galv.).....	B-10342-32
	26	Chase Nipple, 1½".	
	27	Conduit, Double Strip Flexible, 1½" I. D.x2.060" O. D.x3' 0" Long.	
	28	Box Connector, 1½" M. I. Galv.	
	29	Conduit, Double Strip Flexible, 1½" I. D.x1.148" O. D.x2' 8" Long.	
	30	Box Connector, ¾" M. I. Galv.	