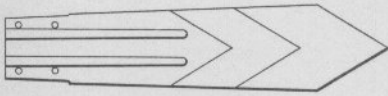
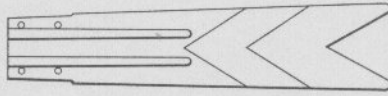


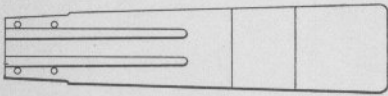
abuzromalM



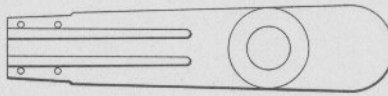
- 1-3'-6" LONG
- 2-4'-0" LONG
- 3-4'-6" LONG



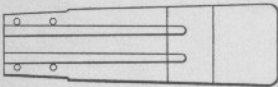
- 4-3'-6" LONG
- 5-4'-0" LONG
- 6-4'-6" LONG



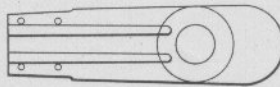
- 7-3'-6" LONG
- 8-4'-0" LONG
- 9-4'-6" LONG



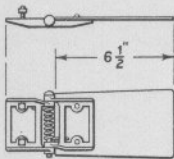
- 10-3'-6" LONG
- 11-4'-0" LONG
- 12-4'-6" LONG



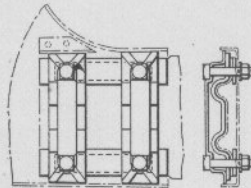
13-2'-6" LONG



14-2'-6" LONG



15



16

Steel Semaphore Blades

Steel Blades

NOTE: When ordering steel blades furnish sketch showing striping and specify colors. For wood blades see Plate H1818.

Drawing references are shown for convenience in checking shipping lists and invoices.

Fig. No.	Name	Drawing Reference
Order by plate, figure number and name		
1	Sheet steel Blade, enameled, 3'-6" long, pointed end. See Note.....	
2	Sheet steel Blade, enameled, 4'-0" long, pointed end. See Note.....	
3	Sheet steel Blade, enameled, 4'-6" long pointed end. See Note.....	
4	Sheet steel Blade, enameled, 3'-6" long, fish tail end. See Note.....	
5	Sheet steel Blade, enameled, 4'-0" long, fish tail end. See Note.....	
6	Sheet steel Blade, enameled, 4'-6" long fish tail end. See Note.....	
7	Sheet steel Blade, enameled, 3'-6" long, square end. See Note.....	
8	Sheet steel Blade, enameled, 4'-0" long, square end. See Note.....	
9	Sheet steel Blade, enameled, 4'-6" long, square end. See Note.....	
10	Sheet steel Blade, enameled, 3'-6" long, round end. See Note.	
11	Sheet steel Blade, enameled, 4'-0" long, round end. See Note.	
12	Sheet steel Blade, enameled, 4'-6" long, round end. See Note.	
13	Sheet steel Blade, enameled, 2'-6" long, square end. See Note.	
14	Sheet steel Blade, enameled, 2'-6" long, round end. See Note.	
15	Hinged sheet steel Biade Complete as shown, for Dwarf Signals. (1-15a, 1-15b, 1-15c, 1-15d, 1-15e, 2-15f, 2-15g).....	
15a	Sheet steel Blade only, 6½" long, for Fig. 15.....	5764
15b	Hinge, for Blade, for Fig. 15.....	1399
15c	Hinge, for Spectacle, for Fig. 15.....	1398
15d	Pin, with ¾" x ½" Cotter Pin for Hinges Fig. 15b and Fig 15c..	
15e	Spring, for Fig. 15.....	1396

Steel Blades

Drawing references are shown for convenience in checking shipping lists and invoices.

Fig. No.	Name	Drawing Reference
Order by plate, figure number and name		
15f	Rivet. $\frac{3}{16}$ " x $\frac{3}{8}$ " rd. hd., for fastening Blade Fig. 15a to Hinge Fig. 15b.....	0203
15g	Bolt $\frac{1}{4}$ " x $\frac{3}{4}$ " sq. hd. with sq. Nut, for fastening Fig. 15 to Spectacle.....	0134
16	Blade Clamp Complete as shown, for fastening sheet steel Blades to Spectacles. (1-16a, 1-16b, 2-16c, 2-16d, 4-16e, 2-16f).....	48021
16a	Front Clamp only, for Fig. 16.....	47892
16b	Rear Clamp only, for Fig. 16.....	47893
16c	Pad, used between Clamps and sheet steel Blade.....	47894
16d	Pad, used between sheet steel Blade and Spectacle.....	47896
16e	Bolt. $\frac{1}{2}$ " x $2\frac{1}{4}$ " sq. hd. with hex. Nut, for fastening Blade Clamps and Blade to Spectacle.....	41798
16f	Lock Washer, for Fig. 16.....	47895