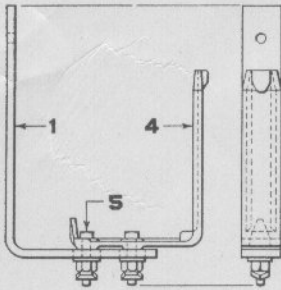
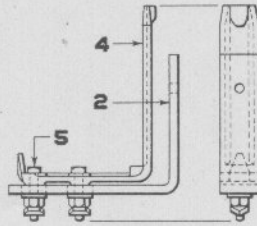


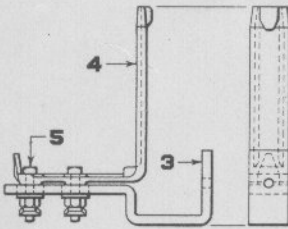
ADAPTION M



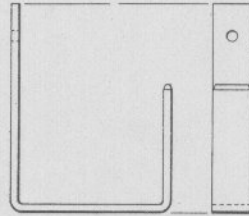
A



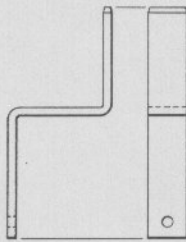
B



C



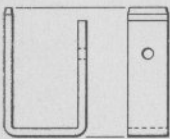
D



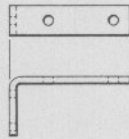
E



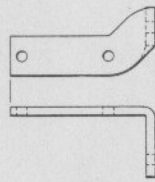
F



G



H



J

Lamp Brackets

Lamp Brackets for Model 2A Dwarf Signals

Drawing references are shown for convenience in checking shipping lists and invoices.

Fig. No.	Name	Drawing Reference
Order by plate, figure number and name		
A	Lamp Bracket Complete as shown. Used with Spectacles shown on Plate H1812 Figs. A, B, C, D, K and Discs shown on Plate H1816 Figs. B and B1. (1-1, 1-4, 2-5).....	42035
B	Lamp Bracket Complete as shown. Used with Spectacle shown on Plate H1812 Fig. G and Discs shown on Plate H1816 Fig. D. R. S. A. Type. (1-2, 1-4, 2-5).....	43418
C	Lamp Bracket Complete as shown. Used with Spectacles shown on Plate H1812 Figs. J and N. R. S. A. Type. (1-3, 1-4, 2-5).....	42078
D	Lamp Bracket, used with Spectacles shown on Plate H1812 Figs. A, B, C, D, E, K and Disc shown on Plate H1816 Figs. B and B1. Specify Spectacle or Disc and style of Lamp to be used.....	
E	Lamp Bracket for Electric Lamp, used with Disc shown on Plate H1816 Fig. A.....	32733
F	Lamp Bracket, used with Spectacles shown on Plate H1812 Figs. H, J, N, P and Discs shown on Plate H1816 Figs. A and C. Specify Spectacle or Disc and style of Lamp to be used.....	
G	Lamp Bracket, used with Spectacles shown on Plate H1812 Figs. F, G, M and Disc shown on Plate H1816 Fig. D. Specify Spectacle or Disc and style of Lamp to be used..	
H	Lamp Bracket for Electric Lamp, used on Short Horn Dwarf Signal with Spectacles shown on Plate H1812 Figs. N, P and Disc shown on Plate H1816 Fig. C.....	30849
J	Lamp Bracket, for Electric Lamp, used with Spectacles shown on Plate H1812 Figs. J and N.....	46003
1	Support only, for Lamp Bracket Complete Fig. A.....	42034
2	Support only, for Lamp Bracket Complete Fig. B.....	43419
3	Support only, for Lamp Bracket Complete Fig. C.....	42079
4	Lamp Bracket only. R. S. A. Std.....	35656
5	Bolt, $\frac{1}{2}$ " x 2" sq. hd. with hex. Nut, Washer and Grip Nut, for fastening Lamp Bracket Fig. 5 to Support.....	