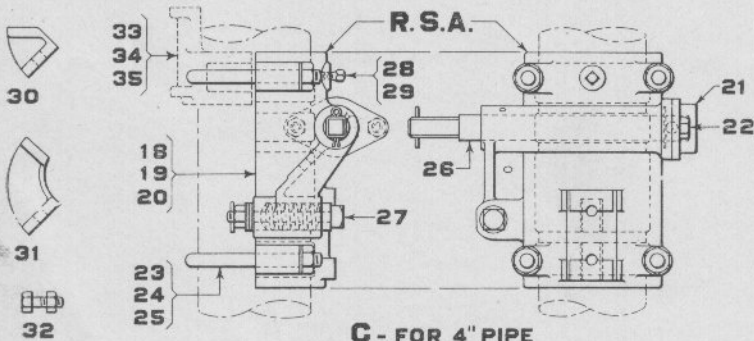


**A-UPPER QUADRANT
FOR 5" PIPE**

**B-LOWER QUADRANT
FOR 5" PIPE**



**C - FOR 4" PIPE
D - FOR 5" PIPE
E - FOR 6" PIPE**

Bearings

Bearings

Drawing references are shown for convenience in checking shipping lists and invoices.

Fig. No.	Name	Drawing Reference
Order by plate, figure number and name		
A	Bearing Complete as shown, for 5" pipe. For use with Model 2A Upper Quadrant Base of Mast Signal Mechanism. Specify Spectacle to be used so that proper Shaft may be furnished and if for Two Arm Signal specify whether for upper or lower Arm. See Part 18 of this Section for Spectacles.....	40647
B	Bearing Complete as shown, for 5" pipe. For use with Model 2A Lower Quadrant Base of Mast Signal Mechanism. Specify Spectacle to be used so that proper Shaft may be furnished and if for Two Arm Signal specify whether for upper or lower Arm. See Part 18 of this Section for Spectacles.....	
C	Bearing Complete as shown, for 4" pipe. For use on mechanically operated Arms. Includes two U Bolts, Buffer Stop and Shaft for R. S. A. Spectacle. R. S. A. Type.....	
C1	as above, except with Clamp Fig. 33 and two 3/4" x 5 3/4" sq. hd. Bolts with hex. Nuts in place of one U Bolt Fig. 23.	
D	Bearing Complete as shown, for 5" pipe. For use on mechanically operated Arms. Includes two U Bolts, Buffer Stop and Shaft for R. S. A. Spectacle. R. S. A. Std.....	
D1	as above, except with Clamp Fig. 34 and two 3/4" x 5 3/4" sq. hd. Bolts with hex. Nuts in place of one U Bolt Fig. 24..	
E	Bearing Complete as shown, for 6" pipe. For use on mechanically operated Arms. Includes two U Bolts, Buffer Stop and Shaft for R. S. A. Spectacle. R. S. A. Type.....	49070
E1	as above, except with Clamp Fig. 35 and two 3/4" x 6 1/2" sq. hd. Bolts with hex. Nuts in place of one U Bolt Fig. 25.....	
1	Bearing for Fig. A, includes Bushings, Cap and Set Screws. (1-1a, 1-4, 1-5, 1-6, 2-7).....	
1a	Bearing only, for Fig. 1.....	40648

Bearings

Drawing references are shown for convenience in checking shipping lists and invoices.

Fig. No.	Name	Drawing Reference
Order by plate, figure number and name		
2	Bearing, for Fig. B, includes Bushings, Cap and Set Screws. (1-2a, 1-4, 1-5, 1-6, 2-7).....	
2a	Bearing only, for Fig. 2.....	
3	Cover, for Figs. A and B, includes Gasket, Hook Bolt, Thumb Nut and Washer.....	47424
4	Bushing, for back end of Bearings Figs. 1 and 2.....	36072
5	Bushing, for Spectacle end of Bearings Figs. 1 and 2.....	36071
6	Cap, for Bushing Fig. 5.....	35661
7	Set Screw, $\frac{3}{8}$ " x $\frac{1}{2}$ " headless, for holding Bushings Figs. 4 and 5 to Bearings Figs. 1 and 2.....	34495
8	Shaft Complete, for Bearings Figs. A and B. Includes Nut, Washer and Cotter Pin. Specify Spectacle to be used. See Part 18 of this Section for Spectacles.....	
8a	Shaft only, for Fig. 8.....	
9	Washer, for Shaft.....	0381
10	Operating Crank, for Bearing Fig. A, for Upper Quadrant Signals.....	40650
11	Operating Crank, for Bearing Fig. B, for Lower Quadrant Signals.....	40649
12	Cotter Pin, $\frac{1}{4}$ " x $2\frac{1}{4}$ ", for fastening Cranks Figs. 10 and 11 to Shaft.....	0693
13	Buffer Stop Complete, for Bearings Figs. A and B. Includes Stud, Plunger, Spring, Screw, Nut and Washer.....	36073
13a	as above, except with Nut Fig. 14.....	
14	Nut, $\frac{3}{4}$ " hex., for Buffer Stop Fig. 13.....	646
15	Tap Bolt, $\frac{3}{4}$ " x $1\frac{1}{2}$ ", hex. hd., used in place of Buffer Stop Fig. 13.....	0591
16	Jaw Complete as shown, for Upper Quadrant Signals, includes Jaw Pin, Cotter, Hook Bolt and Nuts.....	40653
16a	Jaw Pin, $\frac{3}{8}$ " x $1\frac{1}{8}$ ", for Jaw Complete Fig. 16.....	8237
16b	Hook Bolt, with two hex. Nuts, for Jaw Complete Fig. 16.....	
17	Operating Wire, for Upper Quadrant Signals. Price per foot..	
18	Bearing only, for 4" pipe, for Figs. C and C1. R. S. A. Type..	47096
19	Bearing only, for 5" pipe, for Figs. D and D1. R. S. A. Std..	47095
20	Bearing only, for 6" pipe, for Figs. E and E1. R. S. A. Type..	49069

Bearings

Drawing references are shown for convenience in checking shipping lists and invoices.

Fig. No.	Name	Drawing Reference
Order by plate, figure number and name		
21	Cap, for Bearings Fig. C to Fig. E1 inclusive.....	47091
22	Tap Bolt, $\frac{1}{2}$ " x 1" hex. hd., for fastening Cap Fig. 21 to Bearings Figs 18, 19 and 20.....	0391
23	U Bolt Complete for 4" pipe, for Bearings Complete Figs. C and C1. Includes hex. Nuts and Lock Washers.....	43744
24	U Bolt Complete for 5" pipe, for Bearings Figs. D and D1. Includes hex. Nuts and Lock Washers.....	43741
25	U Bolt Complete for 6" pipe, for Bearings Figs. E and E1. Includes hex. Nuts and Lock Washers.....	43743
26	Shaft Complete, for Bearings Fig. C to Fig. E1 inclusive. Includes Washer, Pin and Cotter.....	47088
27	Buffer Stop Complete, for Bearings Fig. C to Fig. E1 inclusive. Includes Plunger, Collar, Spring, Washers and Cotter Pin.	
28	Set Screw, $\frac{1}{2}$ " x 2" sq. hd., for Bearings Figs. C and C1.....	44568
29	Set Screw, $\frac{1}{2}$ " x 1 $\frac{1}{4}$ " sq. hd., for Bearings Figs. D, D1, E and E1.	39066
30	Filler Block, used with Spectacles operating from 0° to 45° and for Fixed Arm at 45°.....	36774
31	Filler Block, used for fixed Arm at 0°.....	36775
32	Bolt, $\frac{1}{2}$ " x 1 $\frac{1}{2}$ " hex. hd. with hex. Nut, for fastening Filler Blocks Figs. 30 and 31 to Bearings Figs. 18, 19 and 20.	078
33	Clamp, for 4" pipe, R. S. A. Type.....	38222
34	Clamp, for 5" pipe, R. S. A. Std.....	35654
35	Clamp, for 6" pipe, R. S. A. Type.....	41891