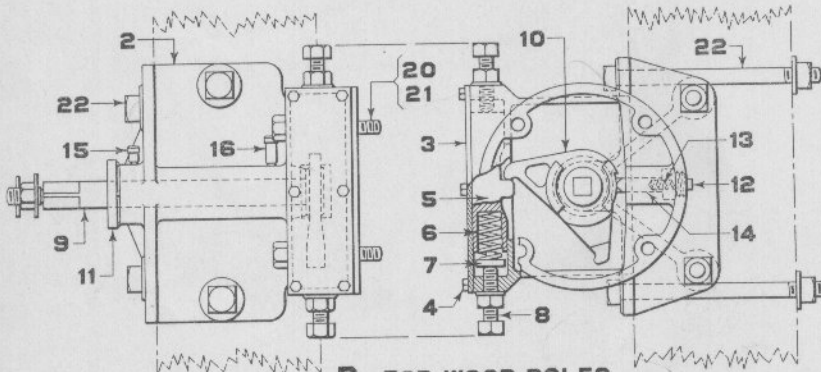
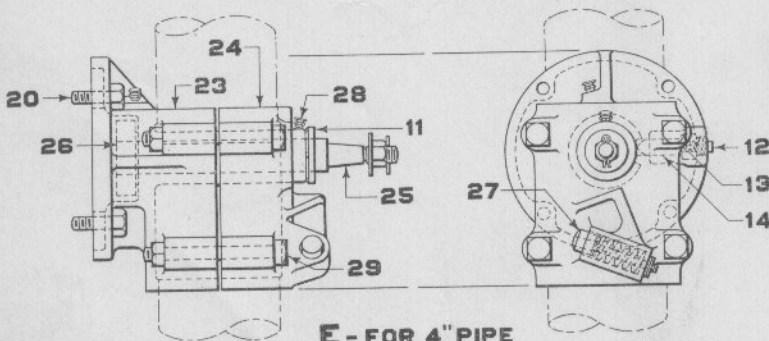


A - FOR 4" PIPE
B - FOR 5" PIPE
C - FOR 6" PIPE



D - FOR WOOD POLES



E - FOR 4" PIPE
F - FOR 5" PIPE

Bearings

Bearings

Drawing references are shown for convenience in checking shipping lists and invoices.

Fig. No.	Name	Drawing Reference
Order by plate, figure number and name		
A	Clamp Bearing Complete as shown, for 4" pipe. For use with Model 2A Top of Mast Signal Mechanism. Includes Shaft, Buffer Stop and Tap Bolts for fastening Signal Mechanism. Specify Spectacle to be used so that proper Shaft may be furnished. See Part 18 of this Section for Spectacles.	34603
B	same as Fig. A, except for 5" pipe.	11
C	same as Fig. A, except for 6" pipe.	11
D	Bearing Complete as shown. For use with Model 2A Signal Mechanism on square wood Poles. Includes Shaft, Buffer Stop and four Bolts Fig. 22 for fastening Bearing to 6" square Pole. Specify Spectacle to be used so that proper Shaft may be furnished. See Part 18 of this Section for Spectacles.	44500
E	Clamp Bearing Complete as shown, for 4" pipe. Used in connection with Spectacle shown on Plate H1808 Fig. E. Includes Shaft and Buffer Stop.	12
F	same as Fig. E, except for 5" pipe.	34283
1	Bearing only, for Figs. A, B and C, for Upper Quadrant Signals	34670
1a	Bearing only, for Figs. A, B and C, for Lower Quadrant Signals	12
2	Bearing only, for Fig. D, for Upper Quadrant Signals.	44501
2a	Bearing only, for Fig. D, for Lower Quadrant Signals.	12
3	Plate, for Bearings Figs. A, B, C and D.	34673
4	Tap Bolt, $\frac{5}{16}$ " x $\frac{3}{4}$ " hex. hd., for fastening Plate Fig. 3 to Bearings.	0844
5	Plunger, for Buffer Stop on Bearings Figs. A, B, C and D.	34671
6	Spring, for Plunger Fig. 5.	30982
7	Filler, for Spring Fig. 6.	34674
8	Tap Bolt, $\frac{5}{8}$ " x $2\frac{1}{4}$ " hex. hd. with hex. Nut, for Buffer Stop on Bearings Figs. A, B, C and D.	12
9	Shaft Complete, for Bearings Figs. A, B, C and D. Includes Nut, Washer and Cotter Pin. Specify Spectacle to be used. See Part 18 of this Section for Spectacles.	12
9a	Shaft only, for Fig. 9.	12
10	Shaft Driver, for Shaft Fig. 9.	34672

Bearings

Drawing references are shown for convenience in checking shipping lists and invoices.

Fig. No.	Name	Drawing Reference
Order by plate, figure number and name		
11	Retaining Cap, for Bearings Figs. A, B, C, D, E and F.....	35129
12	Pipe Plug, 1", for Spring Fig. 13.....	0888
13	Spring, for Lock Dog Fig. 14.....	6944
14	Lock Dog, for Bearings Figs. A, B, C, D, E and F.....	29913
15	Oiler, for Bearings Figs. A, B, C and D.....	39886
16	Oiler, for Bearings Figs. A, B, C and D.....	44793
17	U Bolt Complete, for 4" pipe, for Bearing Fig. A. Includes hex. Nuts and Washers.....	11
18	U Bolt Complete, for 5" pipe, for Bearing Fig. B. Includes hex. Nuts and Washers.....	11
19	U Bolt Complete, for 6" pipe, for Bearing Fig. C. Includes hex. Nuts and Washers.....	11
20	Tap Bolt, $\frac{5}{8}$ " x $1\frac{3}{4}$ " hex. hd., for fastening Signal Mechanism to Bearings Figs. A, B, C, D, E and F.....	0664
21	Tap Bolt, $\frac{5}{8}$ " x 4" hex. hd., for fastening Signal Mechanism to Bearings Figs. A, B, C and D.....	34675
22	Bolt, $\frac{5}{8}$ " x $7\frac{1}{2}$ " sq. hd. with sq. Nut and Washer, for fastening Bearing Fig. D to 6" square Pole.....	11
23	Bearing only, back half, for 5" pipe, for Fig. F.....	34285
23a	as above, except with Filler for 4" pipe, for Fig. E.....	11
24	Bearing only, front half, for 5" pipe, for Fig. F.....	34284
24a	as above, except with Filler for 4" pipe, for Fig. E.....	11
25	Shaft Complete, for Bearings Figs. E and F and Spectacle shown on Plate H1808 Fig. E. Includes hex. Nut, Washer and Cotter Pin.....	11
25a	Shaft only, for Fig. 25.....	34291
26	Shaft Driver, for Shaft Fig. 25.....	29910
27	Buffer Stop Complete, for Bearings Figs. E and F. Includes Plunger, Spring, Washers and Cotter Pin.....	11
28	Oiler, for Bearings Figs. E and F.....	32418
29	Bolt, $\frac{5}{8}$ " x 6" sq. hd. with hex. Nut, for Bearings Figs. E and F.....	34331