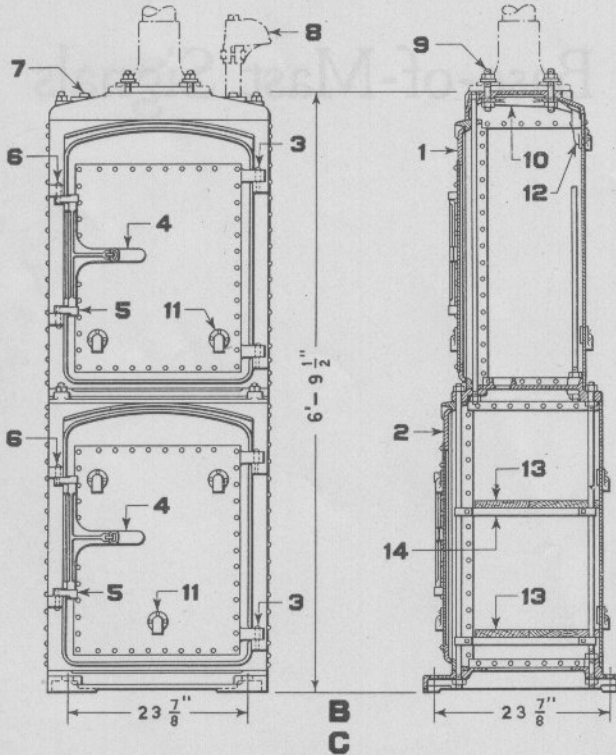


**A**  
MECHANISM CASE FOR MODEL 2A SIGNALS



**B**  
**C**  
COMBINED MECHANISM AND BATTERY CASE  
FOR MODEL 2A SIGNALS

March 1916

**GENERAL RAILWAY SIGNAL COMPANY**

**Mechanism Cases**

**For Model 2A, Base-of-Mast Signals**

When ordering mechanism cases only or combined mechanism and battery cases always state whether cases are for housing one or two signal mechanisms, also state if signals are wire, or pipe or rod connected.

Drawing references are shown for convenience in checking shipping lists and invoices.

Fig. No.	Name	Drawing Reference
<b>Order by plate, figure number and name</b>		
<b>A</b>	Mechanism Case Complete as shown.....	36006
<b>B</b>	Mechanism and Battery Case Complete as shown, Shelving in Battery Case, no Shelving in Mechanism Case.....	36005
<b>1</b>	Door Complete, includes Ventilator Hoods, Staple and Rivets, for Mechanism Case Fig. A, Fig. B and Fig. C.....	
<b>2</b>	Door Complete, includes Ventilator Hoods, Staple and Rivets and Studs for hinge, for Battery Case on Fig. B and Fig. C.	
<b>3</b>	Stud, for holding Doors Fig. 1 and Fig. 2.....	36027
<b>4</b>	Hasp only.....	36023
<b>4a</b>	Staple, with four $\frac{1}{4}$ " x $\frac{5}{8}$ " esk. hd. Rivets, used for Hasp Fig. 4 on Doors Fig. 1 and Fig. 2.....	
<b>5</b>	Link, for Hasp Fig. 4.....	36024
<b>6</b>	Stud, for Hasp Fig. 4.....	36026
<b>7</b>	Pipe Plug, $1\frac{1}{2}$ ", for use when Wire Outlet Fig. 8 is not used....	36174
<b>8</b>	Wire Outlet Complete. Not furnished with Mechanism Cases Complete unless specified.....	37946
<b>9</b>	Stud, $\frac{7}{8}$ " x 5", with two hex. Nuts and Washer.....	
<b>10</b>	Mechanism Shield, for one arm wire connected Signals.....	40642
<b>10a</b>	Mechanism Shield, for two arm wire connected Signals.....	40641
<b>10b</b>	Mechanism Shield, for one or two arm pipe or rod connected Signals.....	36042
<b>11</b>	Ventilator Hood Complete, includes Plate, Screen and Screws.	
<b>12</b>	Outlet Complete, for drip water, used with Mechanism Shields.	
<b>13</b>	Shelving, two pieces, for Case Fig. B.....	
<b>14</b>	Support Complete, for Shelving Fig. 13.....	