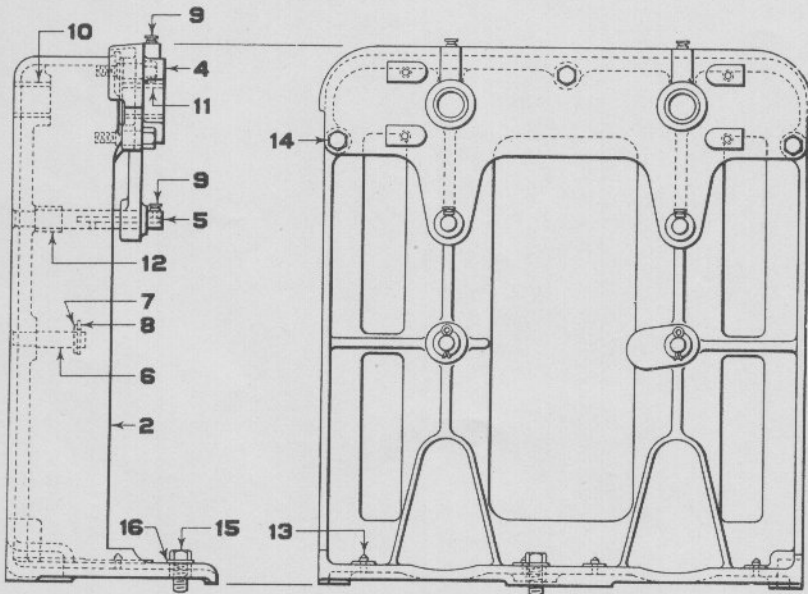


A - FRAME COMPLETE



B - FRAME COMPLETE

Base-of-Mast Signal Mechanism—Details

March 1916

GENERAL RAILWAY SIGNAL COMPANY

**Model 2A, Base-of-Mast
Signal Mechanism Details**

Drawing references are shown for convenience in checking shipping lists and invoices.

Fig. No.	Name	Drawing Reference
Order by plate, figure number and name		
A	Frame Complete as shown, for One Arm Base of Mast Signal Mechanism. (1-1a, 1-3a).....	
B	Frame Complete as shown, for Two Arm Base of Mast Signal Mechanism. (1-2a, 1-4a).....	
1	Frame, for Fig. A, with Studs, Bushing and Dowel Pins. (1-Frame, 1-5, 1-6, 1-10, 2-13).....	
1a	as above, except with Washer, Cotter Pin, Spacer, Oil Cup and Tap Bolt. (1-1, 1-7, 1-8, 1-9, 1-12, 2-15).....	
2	Frame, for Fig. B, with Studs, Bushing and Dowel Pins. (1-Frame, 2-5, 2-6, 2-10, 4-13).....	
2a	as above, except with Washers, Cotter Pins, Spacers, Oil Cup and Tap Bolts. (1-2, 2-7, 2-8, 2-9, 2-12, 1-15).....	
3	Bearing Bracket, for Fig. A, with Bushing Fig. 11.....	
3a	as above, except with Oil Cup and Dowel Screws. (1-3, 1-9, 2-14).....	
4	Bearing Bracket, for Fig. B, with two Bushings Fig. 11.....	
4a	as above, except with Oil Cups and Dowel Screws. (1-4, 2-9, 3-14).....	
5	Stud, $\frac{7}{8}$ " , for Ratchet Gear.....	36053
5a	as above, except with Oil Cup Fig. 9.....	
6	Stud, $\frac{3}{4}$ " , for Intermediate Gear.....	36054
6a	as above, except with Washer and Cotter Pin. (1-6, 1-7, 1-8).	
7	Washer, $\frac{3}{4}$ " , for Stud Fig. 6.....	23165
8	Cotter Pin, $\frac{1}{8}$ " x 1" , for Stud Fig. 6.....	040
9	Oil Cup, for Stud Fig. 5.....	32418
10	Bushing, for Frames Fig. 1 and Fig. 2.....	22135
11	Bushing, for Bearing Brackets Fig. 3 and Fig. 4.....	22136
12	Spacer, for Ratchet Gear.....	36059
13	Dowel Pin, for fastening Motor to Frame.....	36056
14	Dowel Screw, $\frac{5}{8}$ " x $2\frac{1}{4}$ " hex. hd., for fastening Bearing Bracket Fig. 3 and Fig. 4 to Frames Fig. 1 and Fig. 2.....	36057

Model 2A, Base-of-Mast
Signal Mechanism Details

Drawing references are shown for convenience in checking shipping lists and invoices.

Fig. No.	Name	Drawing Reference
Order by plate, figure number and name		
15	Tap Bolt, $\frac{5}{8}$ " x $1\frac{1}{2}$ " hex. hd., for fastening Frame Fig. 1 and Fig. 2 to Mechanism Case.	0503
15a	as above, except with Washer Fig. 16.	
16	Washer, for Tap Bolt Fig. 15.	087