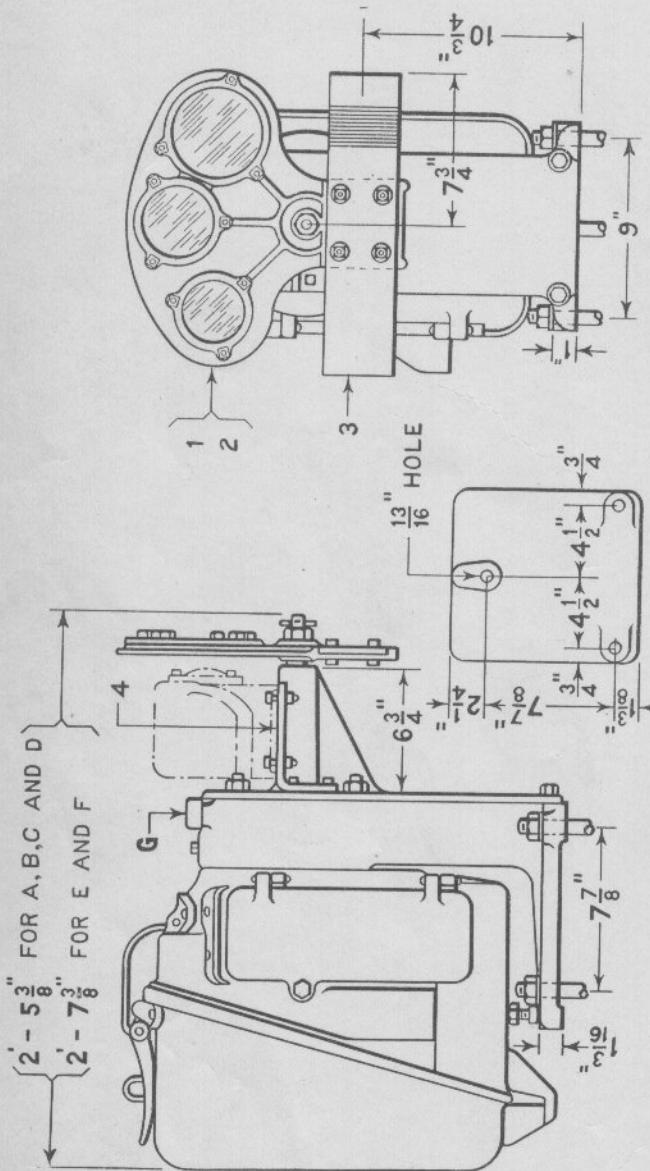


Memoranda



PLAN OF FOUNDATION

- A -- WITH 8 VOLT NON-AUTOMATIC MECHANISM
- B -- WITH 10 VOLT NON-AUTOMATIC MECHANISM
- C -- WITH 20 VOLT NON-AUTOMATIC MECHANISM
- D -- WITH 110 VOLT NON-AUTOMATIC MECHANISM
- E -- WITH 25 VOLT SEMI-AUTOMATIC MECHANISM
- F -- WITH 110 VOLT SEMI-AUTOMATIC MECHANISM

Model 2A, Dwarf Signals

March 1916

**GENERAL RAILWAY SIGNAL COMPANY**

**Model 2A Dwarf Signals**  
**Non-Automatic and Semi-Automatic**  
**Direct-Current, Short-Horn Bearing**

Dwarf Signal as illustrated on opposite page is furnished with a short horn bearing and bracket for electric lamp. The signal occupies little space and is desirable at terminals, etc., where track centers are close. The Signal Mechanism for the non-automatic signal is the same as that shown on Plate H0701. The semi-automatic is the same as that shown on plate H0703.

Unless otherwise specified, signals will be furnished as shown. State number and color of roundels. Lamp and foundation are not included.

Circuit controller is equipped with the contacts necessary for the local control of the signals only. If pole changing contacts or extra drag contacts are required, same must be specified. State the positions of the signal blade at which each extra contact is to make and break, considering the stop position as 0 degree.

For Semaphore Oil and Oiling diagrams see Part 21 of this Section.

Drawing references are shown for convenience in checking shipping lists and invoices.

Fig. No.	Name	Drawing Reference
<b>Order by plate, figure number and name</b>		
A	Model 2A Non-Automatic Upper Quadrant Dwarf Signal, with 8 volt Mechanism Plate H0701 Fig. E and Spectacle Fig. 1 (6½" centers), complete as shown. If lever controlled state whether Dynamic or Battery Indication .....	
A1	as above, except with Spectacle Fig. 2. (7½" centers) .....	
A2	same as Fig. A, except without Foundation Bolts and Roundels .....	
A3	same as Fig. A1, except without Foundation Bolts and Roundels .....	
B	same as Fig. A, except with 10 volt Mechanism Plate H0701 Fig. F .....	
B1	as above, except with Spectacle Fig. 2. (7½" centers) .....	
B2	same as Fig. B, except without Foundation Bolts and Roundels .....	
B3	same as Fig. B1, except without Foundation Bolts and Roundels .....	

## Model 2A Dwarf Signals

### Non-Automatic and Semi-Automatic Direct-Current, Short-Horn Bearing

Drawing references are shown for convenience in checking shipping lists and invoices.

Fig. No.	Name	Drawing Reference
	<b>Order by plate, figure number and name</b>	
<b>C</b>	same as Fig. A, except with 20 volt Mechanism Plate H0701 Fig. G. ....	
<b>C1</b>	as above, except with Spectacle Fig. 2 (7½" centers).....	
<b>C2</b>	same as Fig. C, except without Foundation Bolts and Roundels.....	
<b>C3</b>	same as Fig. C1, except without Foundation Bolts and Roundels.....	
<b>D</b>	Model 2A Non-Automatic Upper Quadrant Dwarf Signal, with 110 volt Mechanism Plate H0701 Fig. H and Spectacle Fig. 1. (6½" centers), complete as shown. ....	
<b>D1</b>	as above, except with Spectacle Fig. 2. (7½" centers).....	
<b>D2</b>	same as Fig. D, except without Foundation Bolts and Roundels.....	
<b>D3</b>	same as Fig. D1, except without Foundation Bolts and Roundels.....	
<b>E</b>	Model 2A Semi-Automatic Upper Quadrant Dwarf Signal, with 25 volt Mechanism Plate H0703 Fig. C and Spectacle Fig. 1. (6½" centers), complete as shown. ....	
<b>E1</b>	as above, except with Spectacle Fig. 2. (7½" centers).....	
<b>E2</b>	same as Fig. E, except without Foundation Bolts and Roundels.....	
<b>E3</b>	same as Fig. E1, except without Foundation Bolts and Roundels.....	
<b>F</b>	same as Fig. E, except with 110 volt Mechanism Plate H0703 Fig. D.....	
<b>F1</b>	as above, except with Spectacle Fig. 2. (7½" centers).....	
<b>F2</b>	same as Fig. F, except without Foundation Bolts and Roundels.....	
<b>F3</b>	same as Fig. F1, except without Foundation Bolts and Roundels.....	

March 1916

GENERAL RAILWAY SIGNAL COMPANY

**Model 2A Dwarf Signals**  
**Non-Automatic and Semi-Automatic**  
**Direct-Current, Short-Horn Bearing**

Drawing references are shown for convenience in checking shipping lists and invoices.

Fig. No.	Name	Drawing Reference
<b>Order by plate, figure number and name</b>		
<b>G</b>	Post Complete. Specify whether for 8, 10, 20, 25 or 110 volt Signal. For details see Plate H0707 Fig. B. ....	
<b>1</b>	Spectacle Complete, includes Bezel Rings and Bolts, three light, 90° throw, 6½" centers, takes 3½", 4" and 5" Roundels. (Roundels are not included). For details see Plate H1812 Fig. P. ....	29941
<b>2</b>	Spectacle Complete, includes Bezel Rings and Bolts, three light, 90° throw, 7½" centers, takes 5½" Roundels. (Roundels are not included). For details see Plate H1812 Fig. N. ....	32630
<b>3</b>	Wood Blade, one priming coat only, with four Washers and four ¼" x ⅜" sq. hd. Bolts with sq. Nuts. ....	
<b>3a</b>	Wood Blade only, for Fig. 3. ....	
<b>4</b>	Lamp Bracket. ....	30849