

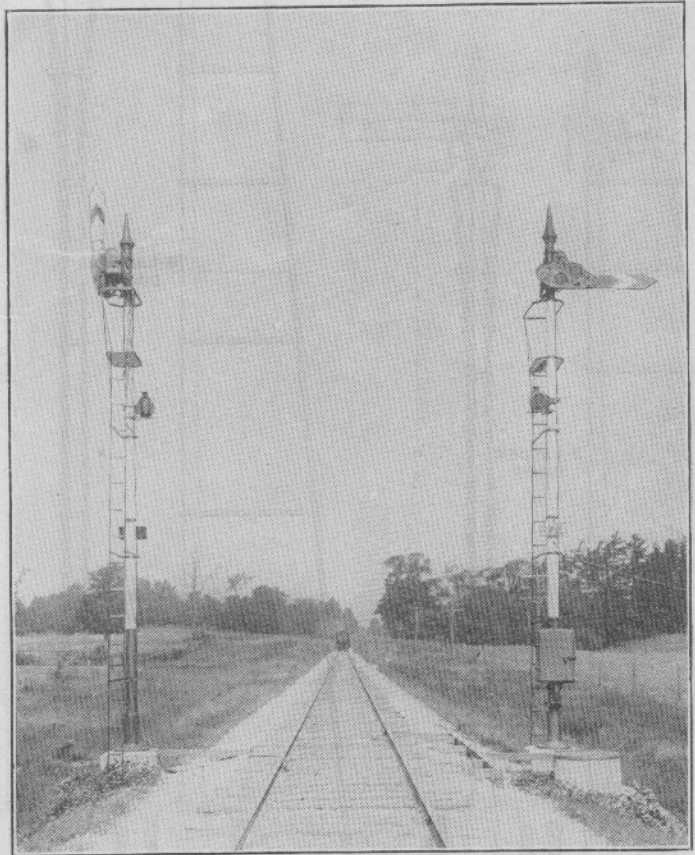
# Section H, Part 1

*Supersedes Section H  
Part 1, Dated January, 1912*

## Model 2A, Direct-Current Top-of-Mast Ground Signals

K - WITH 10 VOLT MECHANISM  
 J - WITH 20 VOLT MECHANISM  
 I - WITH 30 VOLT MECHANISM  
 H - WITH 40 VOLT MECHANISM  
 G - WITH 50 VOLT MECHANISM  
 F - WITH 60 VOLT MECHANISM

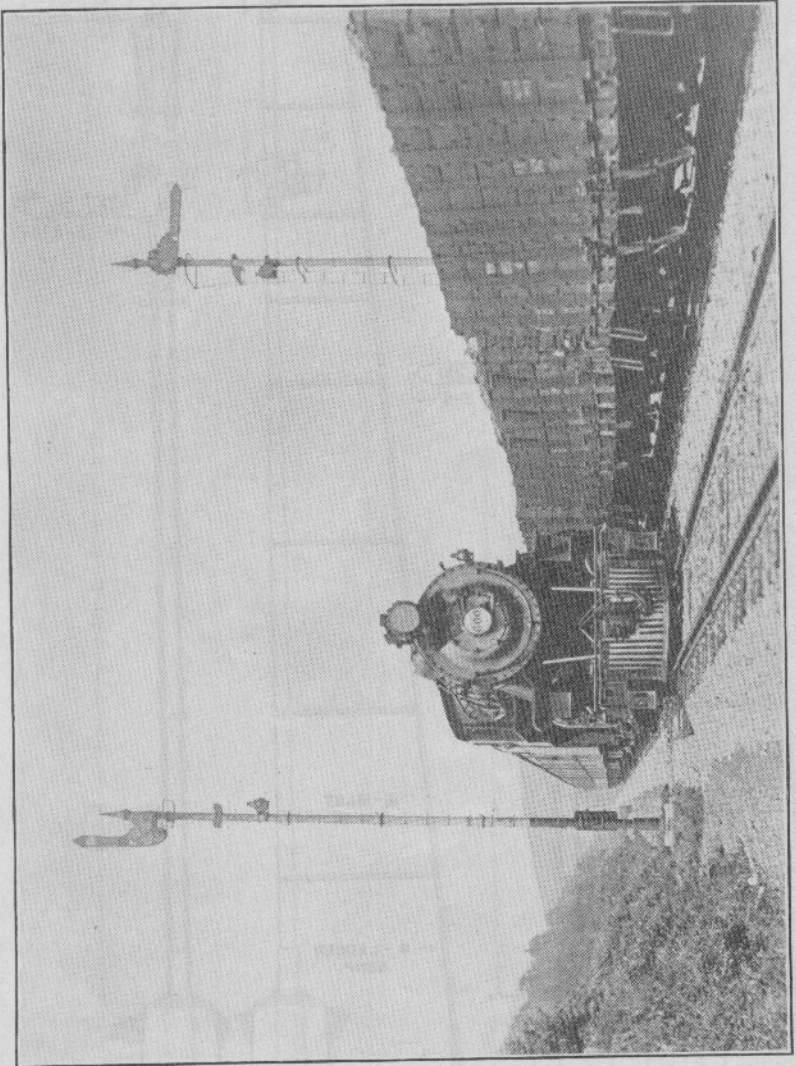
One Arm Upper Quadrant Ground Signal



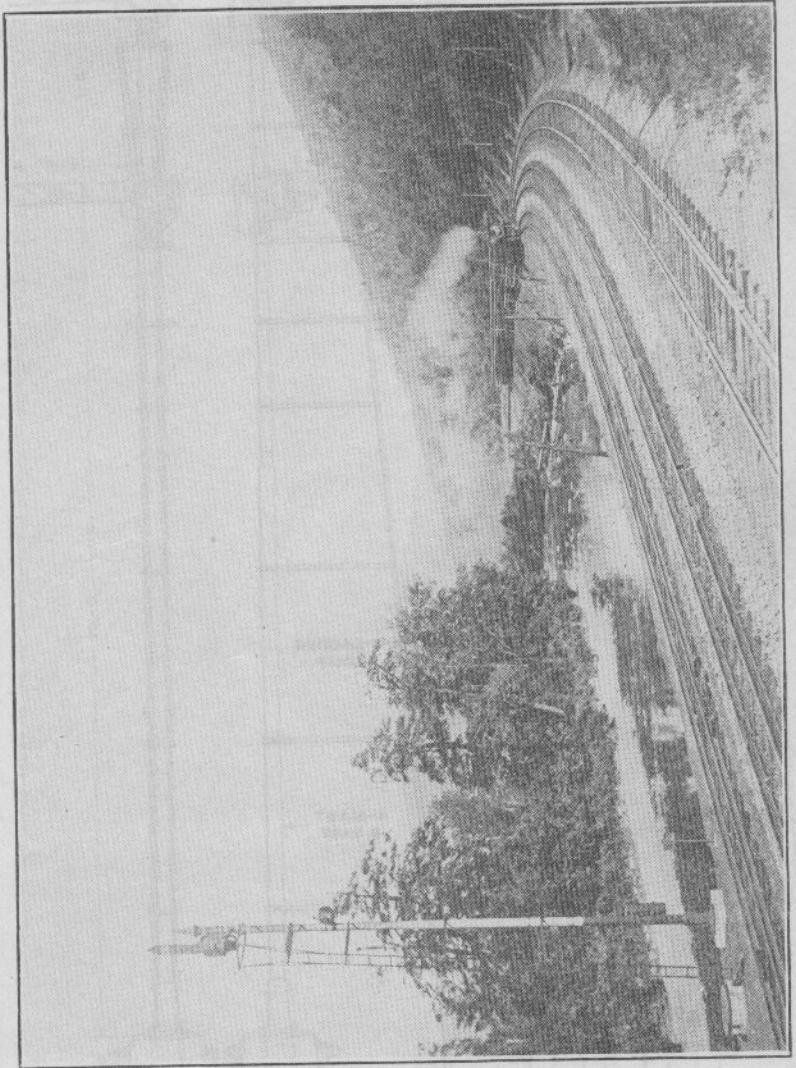
Model 2A Automatic Signals  
Absolute Permissive Block System

- A - WITH 24 VOLT MECHANISM
- B - WITH 18 VOLT MECHANISM
- C - WITH 12 VOLT MECHANISM
- D - WITH 6 VOLT MECHANISM
- E - WITH 24 VOLT MECHANISM
- F - WITH 18 VOLT MECHANISM
- G - WITH 12 VOLT MECHANISM
- H - WITH 6 VOLT MECHANISM

The Arm Lower Quadrant Ground Signal



Model 2A Automatic Block Signals



Model 2A Automatic Block Signals

1 - WITH 8 VOLT MECHANISM  
2 - WITH 10 VOLT MECHANISM  
3 - WITH 20 VOLT MECHANISM  
4 - WITH 30 VOLT MECHANISM  
5 - WITH 40 VOLT MECHANISM

6 - WITH 5 VOLT MECHANISM  
7 - WITH 10 VOLT MECHANISM  
8 - WITH 20 VOLT MECHANISM  
9 - WITH 30 VOLT MECHANISM  
10 - WITH 40 VOLT MECHANISM

Two Arm Lower Quadrant Crossed Signals