

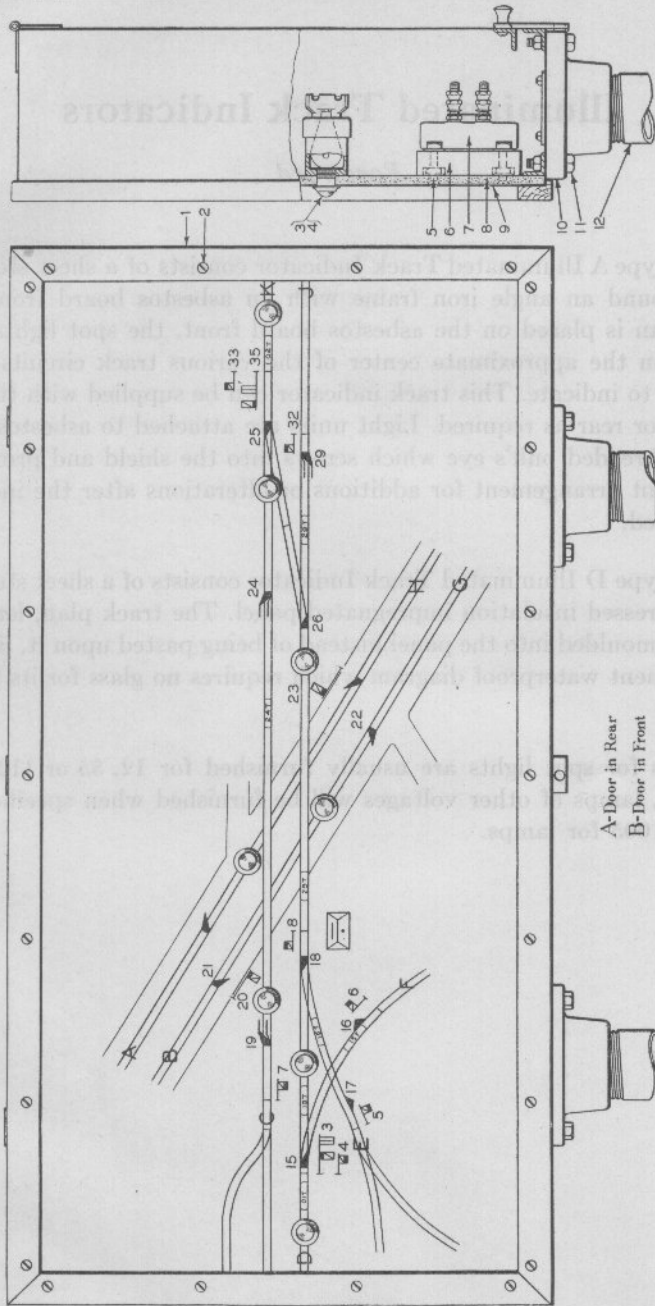
Illuminated Track Indicators

Foreword

The Type A Illuminated Track Indicator consists of a sheet steel case built around an angle iron frame with an asbestos board front. The track plan is placed on the asbestos board front, the spot lights being located in the approximate center of the various track circuits which they are to indicate. This track indicator can be supplied with the door in front or rear as required. Light units are attached to asbestos board by the threaded bull's eye which screws into the shield and provides a convenient arrangement for additions or alterations after the indicator is installed.

The Type D Illuminated Track Indicator consists of a sheet steel case with a pressed insulation impregnated panel. The track plan, lettering, etc., are moulded into the panel instead of being pasted upon it, insuring a permanent waterproof diagram which requires no glass for its protection.

Lamps for spot lights are usually furnished for 12, 55 or 110 volts; however, lamps of other voltages will be furnished when specified. See Plate G1005 for lamps.



A-Door in Rear
B-Door in Front

Type A Illuminated Track Indicator

Type A Illuminated Track Indicator

NOTE: Name and location of interlocking plant for which material is required should be shown on order. See Plate G1005 for lamps and lamp receptacles.

Drawing references are shown for convenience in checking shipping lists and invoices.

Fig. No.	Name	Drawing Reference
Order by plate, figure number and name		
A	Type A, Class A Illuminated Track Indicator Complete, wire inlets and supports at bottom for mounting on machine; door in rear, hinged at top as shown. Size of indicator and length of pipe mountings as required	
A1	as above, except wire inlets and supports at top for suspending from ceiling. Size of indicator and length of pipe mountings as required	
B	Type A, Class B Illuminated Track Indicator Complete, wire inlets and supports at bottom; for mounting on machine, door in front	
B1	as above, except wire inlets and supports at top for suspending from ceiling. Size of indicator and length of pipe mounting as required	
1	Moulding, golden oak finish, for front of indicator as shown. Length as required	6651-1
2	Screw, No. 10-32 x 1 1/4", fl. hd., with nut, for fastening moulding Fig. 1 to box	34053 38239
3	Light Unit Complete, does not include lamps, has receptacle for miniature screw base lamps, for details and order references see Plate G1005 Fig. E	
4	Light Unit Complete, does not include lamp, has receptacle for single or double contact bayonet base lamps, for details and order references see Plate G1005 Figs. C and D	
5	Bolt, No. 14-24 x 1 3/4" fl. hd., with 2 sq. nuts and 2 washers for fastening terminal board Fig. 6 to asbestos board Fig. 8	0380-3 42839 069
6	Terminal Board, drilled for A.R.A. Terminals as shown. Length as required	47710
7	Porcelain Base Terminal Complete A.R.A. standard. With mounting screws for terminal board Fig. 6	0248-1 46048-2 Gr. 2
8	Asbestos Board, for face of indicator. Size of drilling as required	47691
9	Print of Track Diagram, for face of indicator. Size as required	
10	Pipe Flange, for holding conduit	47698
11	Bolt, 5/16" x 1 1/4" with hex. nut for fastening flange Fig. 10 to frame	0102-1
12	Conduit, 2" used as support and wire inlet, for track indicator. length as specified	46190-1