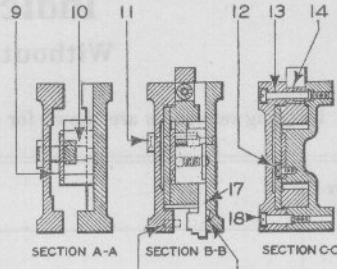
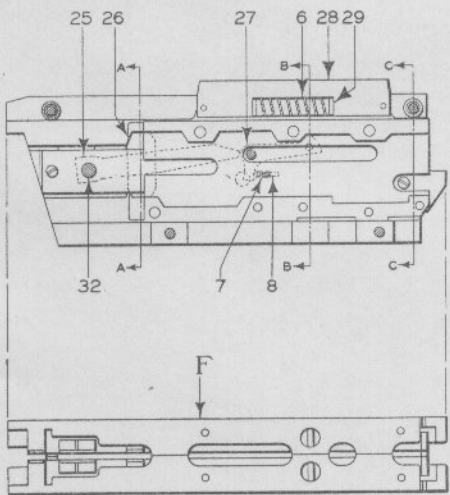
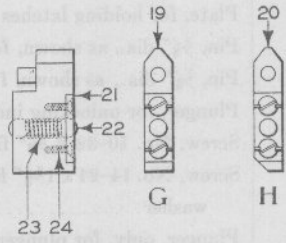


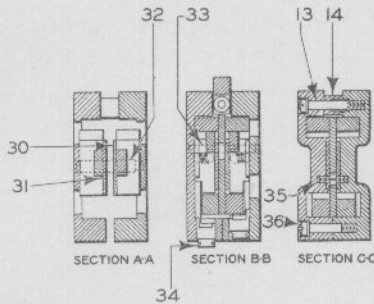
A-Indication Latch For Switch Lever
B-Indication Latch For Signal Lever



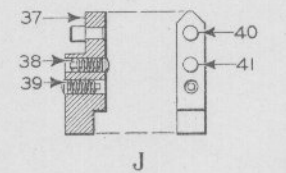
SECTION A-A SECTION B-B SECTION C-C



C- Double Indication Latch



SECTION A-A SECTION B-B SECTION C-C



J

**Indication Latches
With Buffer Arrangement
For Model 5 Electric Interlocking Machines**

Model 5 Electric Interlocking Machines
Indication Latches
 With Buffer Arrangement

Drawing references are shown for convenience in checking shipping lists and invoices.

Fig. No.	Name	Drawing Reference
Order by plate, figure number and name		
A	Indication Latch Complete, as shown, for switch lever	53303-5 Gr. 1
B	Indication Latch Complete, for signal lever	53303-5 Gr. 2
B1	as above, except has plunger Fig. 17b. For use with indication magnet Fig. E shown on Plate G0502.	53303-8 Gr. 1
C	Indication Latch Complete, as shown, double indication.	53303-6 Gr. 1
D	Case Complete, for housing latch mechanism, includes case and cover also parts Figs. 8, 10, 11, 13, 14 and 18. For indication latches Figs. A and B.	53304 Gr. 1
E	Case Complete, for housing latch mechanism, includes case and cover, also parts Figs. 8, 10, 11, 13, 14, 15 and 18. For indication latch Fig. B1.	53304 Gr. 2
F	Case Complete, for housing latch mechanism, includes case and cover, also parts Figs. 8, 13, 14, 32, 33 and 36. For indication latch Fig. C.	53304-1 Gr. 1
G	Plunger Complete, as shown, for indication latch Fig. A.	53306-5 Gr. 3
H	Plunger Complete, as shown, for indication latches Figs. B and B1	53306-5 Gr. 4
J	Plunger Complete, as shown, for indication latch Fig. C.	53306-6 Gr. 1
1	Latch, as shown, for indication latches Figs. A, B and B1	53346
2	Plunger, for indication latches Figs. A, B and B1.	53340-2
3	Cam Complete, for levers operating switches, for Fig. A.	53305-3 Gr. 1
3a	as above, except for levers operating signals, for Figs. B and B1	53305-3 Gr. 2
4	Latch, as shown, for indication latches Figs. A, B and B1.	53346-4
5	Plunger, for spring Fig. 6.	49839-1
6	Spring, for plungers Figs. 5 and 29.	786-97
7	Spring, for latches, Figs. 4 and 27.	786-142
8	Pin, 1/8" x 5/8", for spring Fig. 7.	721
9	Plate, for holding latches Figs. 1 and 4 in place.	53345-5

(Continued on following page)

Model 5 Electric Interlocking Machines
Indication Latches
 With Buffer Arrangement

Drawing references are shown for convenience in checking shipping lists and invoices.

Fig. No.	Name	Drawing Reference
Order by plate, figure number and name		
10	Pin, $\frac{3}{8}$ " dia., as shown, for latch Fig. 1.	53347-1
11	Pin, $\frac{1}{4}$ " dia., as shown, for latch Fig. 4.	53347
12	Screw, No. 10-32 x $\frac{3}{8}$ " fil. hd., for fastening plate Fig. 9 to case, includes washer.	{ 12280-5 34494-1
13	Screw, No. 14-24 x $1\frac{5}{8}$ " fil. hd., for fastening cover to case, includes ring and washer, for Figs. A, B and C.	{ 53348 7233-3 0510-1
14	Spacer, for use between cover and case, for Figs. A, B and C.	53350
15	Pin, $\frac{1}{4}$ " dia. x $\frac{1}{2}$ " lg., for use in cover on indication latch Fig. B1	504-178
16	Pin, $\frac{1}{8}$ " dia. x $\frac{5}{8}$ " lg., stop for plungers, Figs. 17, 17a and 17b.	504-116
17	Plunger Complete, for unlocking indication latch from indication magnet, includes pin Fig. 16. For indication latch Fig. A, used on switch levers.	53306-2 Gr. 2
17a	as above, except for indication latch Fig. B, used on signal levers	53306-3 Gr. 2
17b	same as Fig. 17, except for indication latch Fig. B1.	53306-4 Gr. 1
18	Screw, No. 14-24 x $1\frac{1}{8}$ " fil. hd., with washer, for fastening cover to case.	{ 53349 0510-1
19	Plunger, includes stud, for indication latch, for use with levers operating switches.	{ 53340-15 441-130
20	Plunger, includes stud, for indication latch, for use with levers operating signals.	{ 53340-11 411-130
21	Plate, for holding ball and spring in plunger, for Figs. G and H.	53341
22	Ball, $\frac{1}{4}$ " dia., for plunger, for Figs. G and H.	18049
23	Spring, for ball Fig. 22, for Figs. G and H.	786-79
24	Screw, No. 4-36 x $\frac{1}{4}$ " fl. hd., for fastening plate Fig. 21 to plunger, for Figs. G and H.	28093-1
25	Latch, as shown, for double indication latch.	53346-2

(Continued on following page)

**Model 5 Electric Interlocking Machines
Indication Latches
With Buffer Arrangement**

Drawing references are shown for convenience in checking shipping lists and invoices.

Fig. No.	Name	Drawing Reference
Order by plate, figure number and name		
26	Plunger, for double indication latch.....	53340-5
27	Latch, as shown, for double indication latch.....	53346-5
28	Cam Complete, for double indication latch.....	53305-4 Gr. 1
29	Plunger, for spring Fig. 6.....	49839-4
30	Plate, left hand, for holding latches Figs. 25 and 27 in place.....	53345-7
31	Plate, right hand, for holding latches Figs. 25 and 27 in place.....	53345-6
32	Pin, $\frac{3}{8}$ " dia., as shown, for latches Fig. 25.....	53347-4
33	Pin, $\frac{1}{4}$ " dia., as shown, for latches Fig. 27.....	53347-2
34	Plunger, for unlocking indication latch from indication magnet....	53340-12
35	Screw, No. 10-32 x $\frac{5}{16}$ " fil. hd., for fastening plates Figs. 30 and 31 to case.....	53348-1
36	Screw, No. 14-24 x $1\frac{3}{8}$ " fil. hd., for fastening cover to case, includes washer.....	53349-3 0510-1
37	Plunger, only, includes stud Fig. 40 for plunger Fig. J.....	53340-10 441-313
38	Pin, for plunger Fig. 41.....	504-253
39	Spring, for plunger Fig. 41.....	786-148
40	Stud, for plunger Fig. 37.....	441-313
41	Plunger, for plunger Fig. 37.....	29960-10