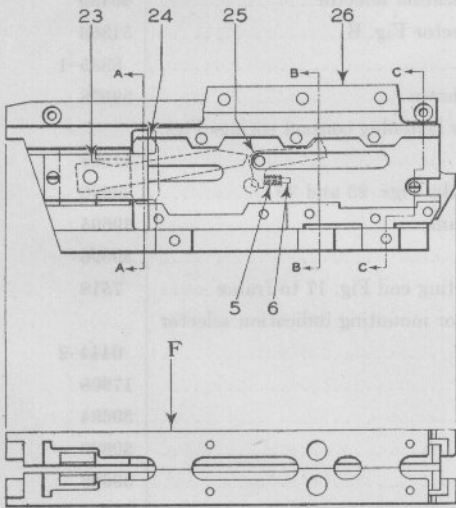
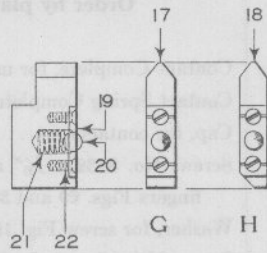
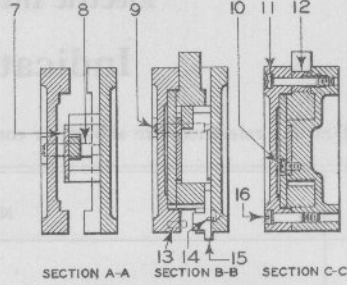
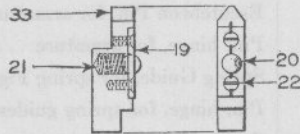
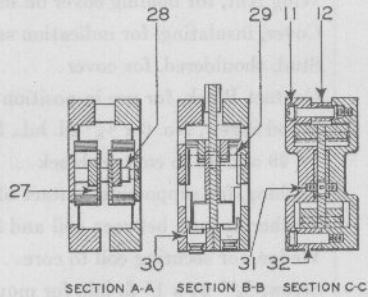


A- Indication Latch For Switch Lever
B- Indication Latch For Signal Lever



C-Double Indication Latch



Indication Latches
Without Buffer Arrangement
For Model 5 Electric Interlocking Machines

Model 5 Electric Interlocking Machines
Indication Latches
 Without Buffer Arrangement

Drawing references are shown for convenience in checking shipping lists and invoices.

Fig. No.	Name	Drawing Reference
Order by plate, figure number and name		
A	Indication Latch Complete, as shown, for switch lever	53303 Gr. 1
B	Indication Latch Complete, for signal lever	53303 Gr. 2
B1	as above, except has plunger Fig. 15b. For use with indication magnet Fig. E shown on Plate G0502	53303-3 Gr. 1
C	Indication Latch Complete, as shown, double indication	53303-1 Gr. 1
D	Case Complete, for housing latch mechanism, includes case and cover, also parts Figs. 6, 8, 9, 11, 12 and 16. For indication latches Figs. A and B	53304 Gr. 1
E	Case Complete, for housing latch mechanism, includes case and cover, also parts Figs. 6, 8, 9, 11, 12, 13 and 16. For indication latch Fig. B1	53304 Gr. 4
F	Case Complete, for housing latch mechanism, includes case and cover, also parts Figs. 6, 11, 12, 28, 29 and 32. For indication latch Fig. C	53304-1
G	Plunger Complete, as shown, for indication latch Fig. A	53306 Gr. 1
H	Plunger Complete, as shown, for indication latches Figs. B and B1	53306 Gr. 2
J	Plunger Complete, as shown, for indication latch Fig. C	53306-1 Gr. 1
1	Latch, as shown, for indication latches Figs. A, B and B1	53346
2	Plunger, for indication latches Figs. A, B and B1	53340-2
3	Cam Complete, for levers operating switches, for Fig. A	53305 Gr. 1
3a	as above, except for levers operating signals, for Figs. B and B1	53305 Gr. 2
4	Latch, as shown, for indication latches Figs. A, B and B1	53346-1
5	Spring, for latches, Figs. 4 and 25	786-142
6	Pin, $\frac{1}{8}$ " x $\frac{5}{8}$ ", for spring Fig. 5	721
7	Plate, for holding latches Figs. 1 and 4 in place	53345-1
8	Pin, $\frac{3}{8}$ " dia., as shown, for latch Fig. 1	53347-1
9	Pin, $\frac{1}{4}$ " dia., as shown, for latch Fig. 4	53347

(Continued on following page)

Model 5 Electric Interlocking Machines
Indication Latches
 Without Buffer Arrangement

Drawing references are shown for convenience in checking shipping lists and invoices.

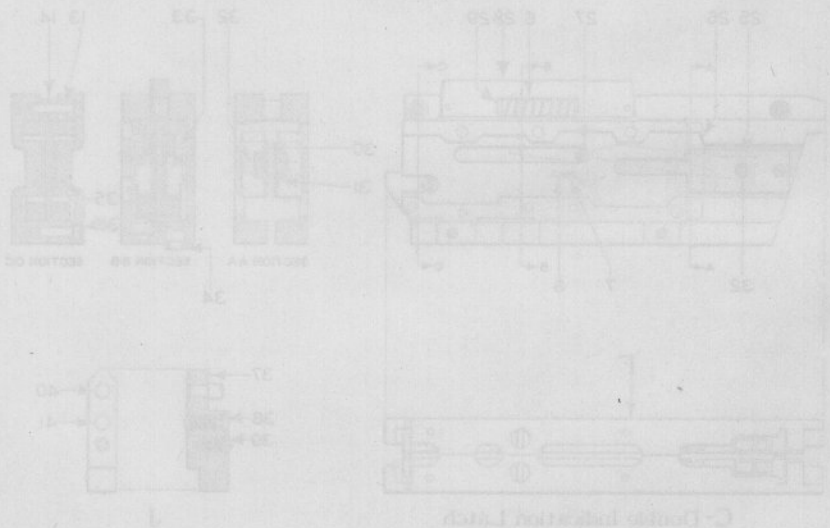
Fig. No.	Name	Drawing Reference
Order by plate, figure number and name		
10	Screw, No. 10-32 x $\frac{3}{8}$ " fil. hd., for fastening plate Fig. 7 to case, includes washer.....	{ 0325-12 34494-1
11	Screw, No. 14-24 x $1\frac{5}{8}$ " fil. hd., for fastening cover to case, includes ring and washer, for Figs. A, B and C.....	{ 53348 7233-3 0510-1
12	Spacer, for use between cover and case for Figs. A, B and C.....	53350
13	Pin, $\frac{1}{4}$ " dia. x $\frac{1}{2}$ " lg., for use in cover on indication latch Fig. B1	504-178
14	Pin, $\frac{1}{8}$ " dia. x $\frac{5}{16}$ " lg., stop for plungers Figs. 15, 15a and 15b....	504-116
15	Plunger Complete, for unlocking indication latch from indication magnet, includes pin Fig. 14. For indication latch Fig. A, used on switch levers.....	53306-2 Gr. 1
15a	as above, except for indication latch Fig. B, used on signal levers..	53306-3 Gr. 1
15b	same as Fig. 15, except for indication latch Fig. B1.....	53306-4 Gr. 1
16	Screw, No. 14-24 x $1\frac{1}{8}$ " fil. hd., for fastening cover to case.....	53349
17	Plunger, only, for indication latch, for use with levers operating switches.....	53340-1
18	Plunger, only, for indication latch, for use with levers operating signals.....	53340
19	Plate, for holding ball and spring in plunger, for Figs. G, H and J.	53341
20	Ball, $\frac{1}{4}$ " dia., for plunger, for Figs. G, H and J.....	18049
21	Spring, for ball Fig. 20, for Figs. G, H and J.....	768-79
22	Screw, No. 4-36 x $\frac{1}{4}$ " fl. hd., for fastening plate Fig. 19 to plunger, for Figs. G, H and J.....	28093-1
23	Latch, as shown, for double indication latch.....	53346-2
24	Plunger, for double indication latch.....	53340-5
25	Latch, as shown, for double indication latch.....	53346-3
26	Cam Complete, for double indication latch.....	53305-1 Gr. 1

(Continued on following page)

Model 5 Electric Interlocking Machines
Indication Latches
 Without Buffer Arrangement

Drawing references are shown for convenience in checking shipping lists and invoices.

Fig. No.	Name	Drawing Reference
Order by plate, figure number and name		
27	Plate, for holding latches Figs. 23 and 25 in place	53345-4
28	Pin, $\frac{3}{8}$ " dia., as shown, for latches Fig. 23	53347-4
29	Pin, $\frac{1}{4}$ " dia., as shown, for latches Fig. 25	53347-2
30	Plunger, for unlocking indication latch from indication magnet.	53340-6
31	Screw, No. 10-32 x $\frac{5}{16}$ " fil. hd., for fastening plates Fig. 27 to case	53348-1
32	Screw, No. 14-24 x $1\frac{3}{8}$ " fil. hd., for fastening cover to case, includes washer	53349-3 0510-1
33	Plunger, only, for plunger Fig. F	53340-4



For Model 5 Electric Interlocking Machines
 With Buffer Arrangement
 Indication Latches