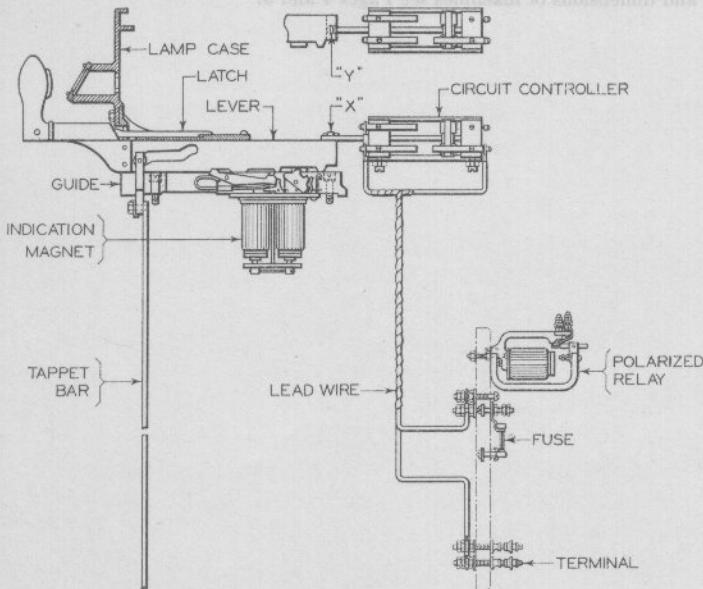


A—Switch Lever Comp.



B—Signal Lever Comp.

**Levers Complete—Unit Type
for Adding to an Existing Machine**

**Model 2 Unit-Lever Type Electric Interlocking Machine
Levers**

NOTE: Levers complete as illustrated on opposite page include all the material required for adding an additional lever to an existing Model 2 Unit-Lever Type Machine such as is shown on Plate G0105, or where it is desired to replace a signal lever with a switch lever or vice versa.

Buffer springs are recommended for levers listed below and will be furnished if specified on order. See Plate G0308.

Lever locks, time locks or other appliances are not included and must be ordered separately, if desired. If levers notched for lever locks are required, same must be specified, giving the position in which the levers are to be locked.

Levers complete are listed below with pin for circuit controller operating rod as shown at X (present method) and also with pin as shown at Y (former method). When ordering, care should be exercised in giving order number for lever with the X or Y connection as may be required. To avoid error it is recommended that name and location of plant for which material is required, be shown on the order.

Drawing references are shown for convenience in checking shipping lists and invoices.

Fig. No.	Name	Drawing Reference
Order by plate, figure number and name		
A	Lever Complete, for single switch or derail. Includes all apparatus necessary for adding lever in machine. Order must specify the following: (1) Name and location of interlocking plant. (2) See Plate G0308 and specify Fig. reference for lever desired. (3) Lever number. (4) Color of handle. (5) Model and operating voltage of switch machine. (6) Number of tiers of locking. (7) If lever is to be notched for electric lock specify if for solenoid lock as shown on Plate G1111 or forced drop lever lock as shown on Plate G1112, also position it is desired to lock lever i.e., normal, reverse, etc. See Plate G1115 for lever notching.	
A1	as above, except with stub lever for double switch. Order must specify information as required in Fig. A.	

(Continued on following page)

Model 2 Unit-Lever Type Electric Interlocking Machine

Lever

Drawing references are shown for convenience in checking shipping lists and invoices.

Fig. No.	Name	Drawing Reference
Order by plate, figure number and name		
B	<p>Lever Complete, for signal. Includes all apparatus necessary for adding lever in machine.</p> <p>Order must specify the following:</p> <ol style="list-style-type: none"> (1) Name and location of interlocking plant. (2) See Plate G0308 and specify Fig. reference for lever desired. (3) Lever number. (4) Color of handle. (5) Specify type of signal, lever will control, i.e., solenoid, Model 2A or light signal. (6) Dynamic or battery indication. If battery indication give voltage, if A.C., give voltage and frequency. (7) Number of tiers of locking. (8) Specify if lever is to be notched for time lock or time contactor. 	

A
 Lever Complete, for single switch or double. Includes all apparatus necessary for adding lever in machine.
 Order must specify the following:
 (1) Name and location of interlocking plant.
 (2) See Plate G0308 and specify Fig. reference for lever desired.
 (3) Lever number.
 (4) Color of handle.
 (5) Model and operating voltage of switch machine.
 (6) Number of tiers of locking.
 (7) If lever is to be notched for electric lock specify if for solenoid lock as shown on Plate G1111 or forced drop lever lock as shown on Plate G1112 also position if is desired to lock lever in normal reverse, etc. See Plate G1113 for lever notching.
 as above, except with step lever for double switch.
 Order must specify information as required in Fig. A.