

Track Model Plate to be held on by 4-48 X 3/8 OVAL C&K Hd Br Mach Sds (Heads painted Cl So, Sp. 509) & Nuts 30337- Sh. 255-8109

Notch ends of cabinet with 3/8" cuts to clear Lamp Receptacles, wherever necessary.

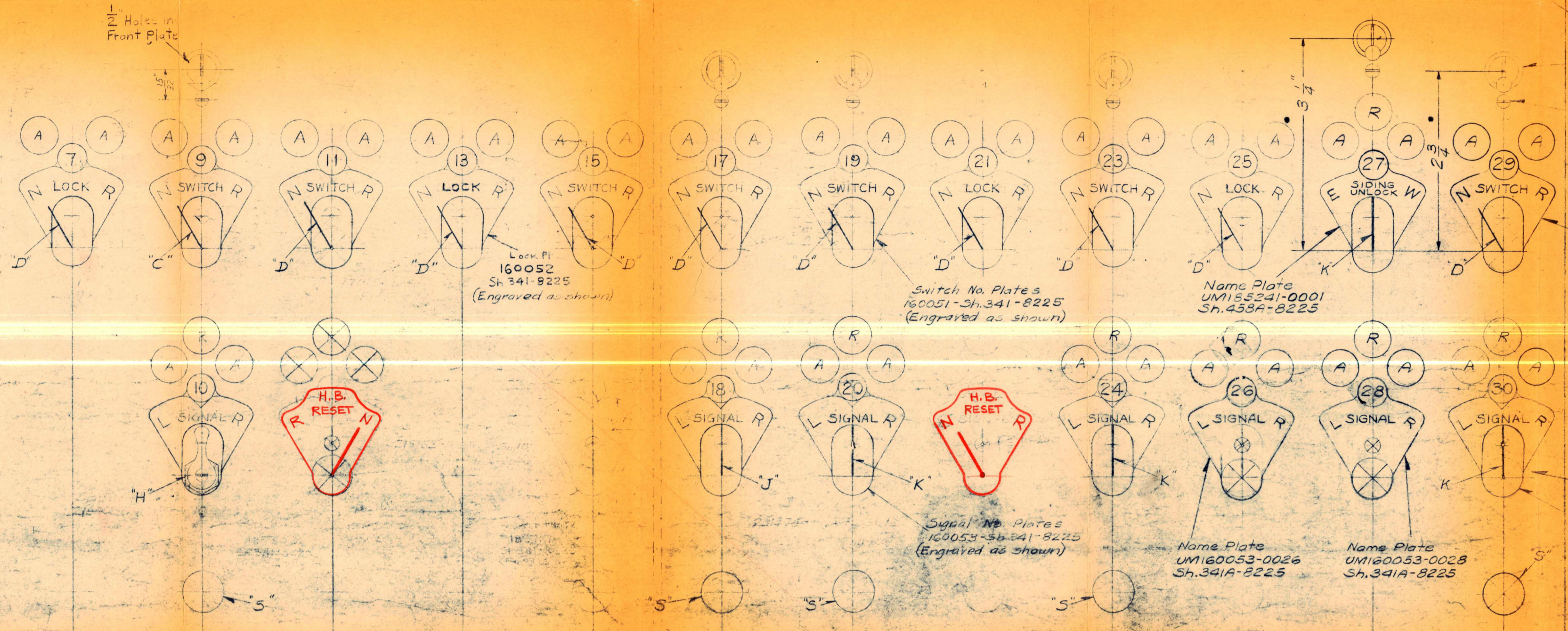
Local nomenclature for Track Model Lamps to Weather Printers Ink on rear of Model Plate.

Track Model Plate UJ630700-0183-E7113-Sh.86

CONTROLLER REFERENCES		
MARKED	SH.	REMARKS
C	101107	12 Level #9
D	171454	8 Lever #13-21-25-28
F	UM2975	19 All Heater Lamps
H	214402	10 Level #10
J	231374	12 Level #18
K	171555	8 Lever #24-26-27-30

PUSH BUTTON REFERENCES		
MARKED	SH.	REMARKS
S	171550	46 Call-On
T	171554	47 Starting & Cut-On
U	171551	46 OS-Bell Cutout
V	171555	47 Control Code K, D
X	180720	47 Starting
Y	171553	47 Starting

Section A-A
120" Holes (#31 Drill size) & C&K per Section A-A in Track Model Plate, Front Plate & Sides.



S.F.D.T. Toggle Switches 237510-492-2954 (4 on end having two connectors assembled)

144 Holes (#27 Drill size) in front plate for 4-40 X 3/8 Rd Hd Br Mach Sds (Heads painted Class 42, Spec 509)

All spare holes to be plugged per C9400-Sh.2 (Using Green Plugs)

Name Plate UM160051-0029 Sh.341B-8225

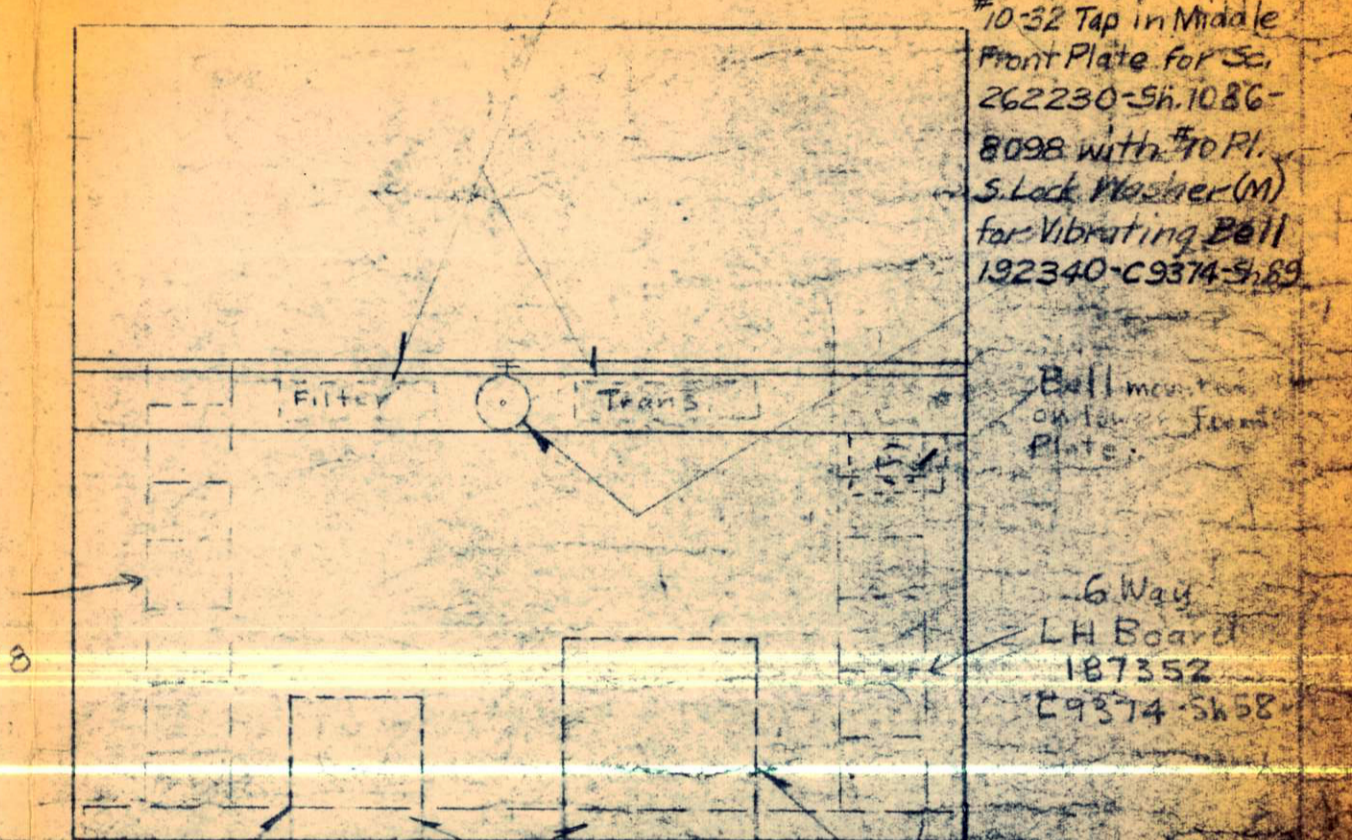
154829-Sh.14-12522 with Lamp Type 2R-18V Switchboard Lamp (For Lamp Cap Ref. See Tab on RH end of Dwg) To be used except where Blue Caps in Traffic Ind are specified (Then 2C-15V lamps must be used.)

Stencil lever numbers in Vermillion Printers Ink on Molded Spring supports.

Name Plate UM160053-0026 Sh.341A-8225

Name Plate UM160053-0028 Sh.341A-8225

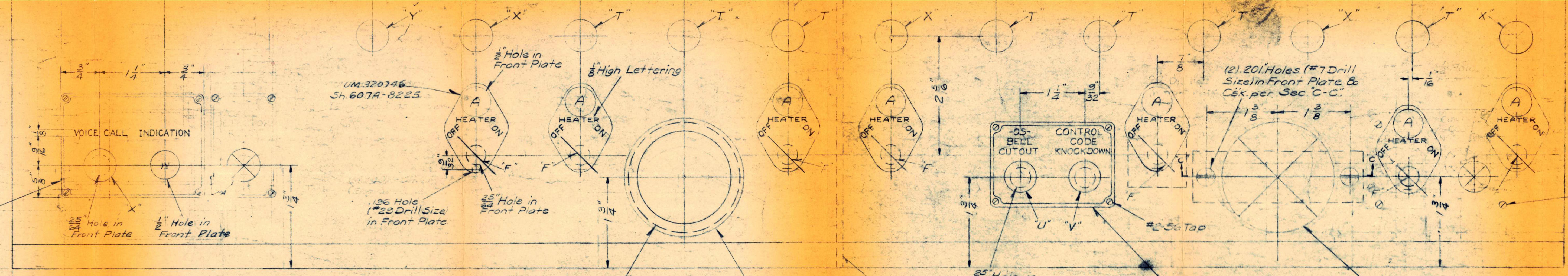
Drill (6) 1/2 Dia Holes for Transformer 225022-C0323-Sh.11 & Telephone Filter 215547-C10743-Sh.11 with held on by 4-1424 X 3/8 Rd Hd S Black Sds (Heads painted cl 42, spec 509), washers 28443-Sh.38-7826 & 7/16 Plain S Lock Washers (Cl. 42, Spec 509) & Nuts 30337- Sh. 255-8109 (Trans. & Filter to be placed against the inside of the middle front plate)



View from front of Cabinet. Condenser A 248631-012693-Sh.67 Call Detector 15300 R-252500-C10718-Sh.17

Color	Sh.
Red	150743
Green	150746
White	150747
Amber	150748
Blue	150749

All holes for Lid Plates etc. to be drilled as shown.



Lever Blocking Devices Plate U1790149-Sh.309-12536 All new controllers to use Stud UM130216 Sh.1102-8114 all old controllers use Stud UM126513-Sh.1102-8114

(8) Screws UM133610-Sh.1557-8098

S.B.M. 276769 MATERIAL NECESSARY TO REVISE MACHINE IN FIELD PER REV. 8 & 9

BUCHANAN - SHENANGO
ERIE RR
TIME CODE SCHEME
(16 STEP SYSTEM)

S.B.M. 226306 PARTS NECESSARY TO REVISE CABINET PER REV. 7
For BM of Cabinet Comp See 231006-C938B-Sh.11A

FRONT PLATE ARRANGEMENT FOR CTC CAB. (SECTIONAL CAB. TYPE)
ERIE RR
U.S. & CO. SHENANGO, PA.

F 1327
SH. 1

NO.	DESCRIPTION	QTY.	REVISION
1	FRONT PLATE	1	REV. 1
2	NAME PLATE	1	REV. 1
3	SWITCH	1	REV. 1
4	LAMP	1	REV. 1
5	LEVER	1	REV. 1
6	INDICATOR	1	REV. 1
7	HEATER	1	REV. 1
8	CUTOUT	1	REV. 1
9	KNOCKDOWN	1	REV. 1
10	SCREW	1	REV. 1
11	WASHER	1	REV. 1
12	NUT	1	REV. 1
13	PLATE	1	REV. 1
14	STUD	1	REV. 1
15	CONDENSER	1	REV. 1
16	CALL DETECTOR	1	REV. 1
17	BOARD	1	REV. 1
18	INDICATOR	1	REV. 1
19	HEATER	1	REV. 1
20	INDICATOR	1	REV. 1
21	HEATER	1	REV. 1
22	INDICATOR	1	REV. 1
23	HEATER	1	REV. 1
24	INDICATOR	1	REV. 1
25	HEATER	1	REV. 1
26	INDICATOR	1	REV. 1
27	HEATER	1	REV. 1
28	INDICATOR	1	REV. 1
29	HEATER	1	REV. 1
30	INDICATOR	1	REV. 1

A	153647-Sh.5 A-A 19-20ST C (AA) BUG (A-A) Bk W R	208201-Sh.25 A-A 19RWK Bk Bu.S (A-A) Bu.W R	208201-Sh.25 A-A 19NWK Bk G.Br Bu.O (A-A) BUW R	208024-Sh.25 B-LA R20H GK Bk R.Bk O.W (A-A) Bk W R	208202-Sh.25 B-A L20H GK Bk Bu.S W Bk.O W R	208139-Sh.25 A-CB-A 19TK Bk G.S (A-A) Bu.W R	208139-Sh.25 A-CB-A 20 POK Bk G.Br (A-A) R.Bu. R.G.W R	208201-Sh.25 A-A SA-VI WFK Bk Bu.G W (A-A) G.S Bu.W R	108762-Sh.33 H-N-BD-D 345S Bk W (A-A) G.W (A-1) R.Bu. R.Bk (A-A) Bk (A-2) O.W (A-1) O.W (A-1) R.W	168670-Sh.6 AJ-N-AJ-C D W (A-1) Bk Bk.F (A-CK) Bu. Bu. (A-1) R.W R.S O.S (A-1) Bu.G (A-1) R.O (A-1) Bk W Br.W R.Bk O.S (A-1) Bu.S (A-1) Bu.O G.S Bk.O.W R.G.W	102580 Sh.30 C-AJ-BG 3F Bk G.S (A-2) O.W (A-2) R.S (A-2) Bk W R.W R.K W (A-2) Bk W (A-2) R.B.W (A-2) Bk W (A-2) R.B.W (A-2) Bk W (A-2) R.B.W (A-2)
B	153647-Sh.5 A-A 23-24ST O.S Bk W R	208201-Sh.25 A-A 23RWK Bk Bu.S (A-B) Bu.O Bu.W R	208201-Sh.25 A-A 23NWK Bk G.Br Bu.O (A-B) BUW R	208024-Sh.25 B-LA R24 H GK Bk R.Bk O.W (A-B) Bk W R	208202-Sh.25 B-A L24 H GK Bk Bu.S W Bk.O W R	208139-Sh.25 A-CB-A 23TK Bk G.S (A-B) Bu.W R	208139-Sh.25 A-CB-A 24 AK Bk G.Br (A-B) R.Bu. R.G.W R	208201-Sh.25 A-A AB19TK Bk Bu.G W (A-B) G.S Bu.W R	228774-Sh.33 E-W-BD-E-S 347S Bk Bk W (A-B) O.S G.W R.Bu. R.Bk (A-B) Bk (A-2) O.W (A-1) R.W	168670-Sh.6 AJ-N-AJ-C D W Bk Bk.F (A-CK) Bu. R.W G.Br Br. R.S O Bu.G O.G P.Bk O.S Bu.G R.O Br.W S G Bk W Br.W Bu.S R.Bu R.G.W	228777 Sh.7 G-C-F-C-G 34G Bk R.G (A-2) R.G (A-2) G.Br G.S (A-2) O.S O.G W Bu. R.Bu (A-2) Bu. (A-2) R.W Br.W Bk W R.W
C	153647-Sh.25 A-A 21-22ST O Bk W R	208201-Sh.25 A-A AM-VIEFK Bk Bu.S (A-C) G.S Bu.W R	208024-Sh.25 B-LA R28SSK Bk Bu. (AC) R.Bk R.W Y B.R.W G (AC) G (AC) R	208202-Sh.25 B-A 21W LK Bk O.W (A-C) R.Bk R.W Y B.R.W G (AC) G (AC) R	208202-Sh.25 B-A LD28HOK Bk Y Bk W Bk.W R	208139-Sh.25 A-CB-A 24 POK Bk G.Br (A-B) R.Bu. R.G.W R	208139-Sh.25 A-CB-A 19-23WZK Bk Y (A-C) G.Br O.G Bu.W R	208201-Sh.25 A-A ABC23TK Bk W (A-C) R.S O.S Bu.W R	108762-Sh.33 H-N-BD-D 348S Bk Bk W (AC) O.G G.W R.Bu. R.Bk (A-2) Bk (A-2) O.W (A-1) R.W	168670-Sh.6 AJ-N-AJ-C D W Bk Bk.F (A-CK) Bu. R.W G.Br Br. R.S O Bu.G O.G P.Bk O.S Bu.G R.O Br.W S G Bk W Br.W Bu.S R.Bu R.G.W	208025 Sh.25 M-E-M XR S S.G-C R S.W (A-2) S.W
D	153647-Sh.25 A-A 27-28ST O Bk W R	168641-Sh.25 B-L-A WFKP Bk Bu.W (A-D) R.Bu. R	168641-Sh.25 B-L-A EFK Bk Bu.W (A-D) R.Bu. R	168647-Sh.25 B-L-A R28H GK Bk O.W (AD) Bk W R	208202-Sh.25 B-A L28H GK Bk Y G.Br Bk W Bk.W R	208139-Sh.25 A-CB-A 27TK Bk G.Br (A-B) R.Bu. R.G.W R	208139-Sh.25 A-CB-A LA28AK Bk R.Bu. R.G.W R	208527-Sh.52 B-E-BK R28AK Bk W (A-D) G.S Bu.W R	108762-Sh.33 H-N-BD-D 457S Bk Bk W (AD) BU (RE-F) G.W R.Bu. R.Bk (AD) Bk (A-2) O.W (A-1) R.W	168670-Sh.6 AJ-N-AJ-C D W Bk Bk.F (A-CK) Bu. R.W G.Br Br. R.S O Bu.G O.G P.Bk O.S Bu.G R.O Br.W S G Bk W Br.W Bu.S R.Bu R.G.W	173178 12558 Sh.18 RE Bk Bk.F (A-CA) S O S.W
E	153647-Sh.5 A-A 10ST O G R	208201-Sh.25 A-A 9RWK Bk Bu.S (AE) R.Bk Bu.W R	208201-Sh.25 A-A 9NWK Bk G.Br Bu.O (AE) Bk W R	208024-Sh.25 B-LA R10H GK Bk R.Bk O.W (AE) Bk W R	208202-Sh.25 B-A L10H GK Bk Bu.S W Bk.O W R	208139-Sh.25 A-CB-A 9TK Bk G.S (AE) Bu.W R	208139-Sh.25 A-CB-A 10POK Bk G.Br (AE) R.Bu. R.G.W R	208201-Sh.25 A-A R10AK Bk W (AE) G.S Bu.W R	108762-Sh.33 H-N-BD-D 358S Bk Bk W (AE) O.G G.W R.Bu. R.Bk (A-E) Bk (A-2) O.W (A-1) R.W	168670-Sh.6 AJ-N-AJ-C D W Bk Bk.F (A-CK) Bu. R.W G.Br Br. R.S O Bu.G O.G P.Bk O.S Bu.G R.O Br.W S G Bk W Br.W Bu.S R.Bu R.G.W	
F	153647-Sh.5 A-A 9-HST O B.W R	208201-Sh.25 A-A 11RWK Bk Bu.S (AF) Bu.W R	208201-Sh.25 A-A 11NWK Bk G.Br Bu.O (AF) Bk W R	208201-Sh.25 A-A 11WZK Bk O.G (AF) Bu.W R	208202-Sh.25 B-A 9WZK Bk O.S (AF) G.Br Bu.W R	208201-Sh.25 A-A 10-18WTK Bk G.S (AF) G.S Bu.W R	208201-Sh.25 A-A 10-18ETK Bk G.Br (AF) R.Bu. R.G.W R	CHANGED IN F BK-SAWFK R.O.F (A-DWK) Bk W (A-DWK) G.S Bu.W R	108762-Sh.33 H-N-BD-D 357S Bk Bk W (AF) O.S G.W R.Bu. R.Bk (AF) Bk (A-2) O.W (A-1) R.W	168670-Sh.6 AJ-N-AJ-C D W Bk Bk.F (A-CK) Bu. R.W G.Br Br. R.S O Bu.G O.G P.Bk O.S Bu.G R.O Br.W S G Bk W Br.W Bu.S R.Bu R.G.W	102580-Sh.30 C-AJ-BG 35G Bk S.W (A-2) Bk W (A-2) R.B.W (A-2) Bk W (A-2) R.B.W (A-2) Bk W (A-2) R.B.W (A-2)

BUCHANAN-SHENANGO
ERIE, R.R.

For Form Chart see C9362-Sh.649

OFFICE STORAGE UNIT
WIRING DIAGRAM AND RELAY TABULATION

WIRING DIAGRAM
For Rack

Right Hand
Upper Front

RED IN

2 For Circuit Inter Connecting Crb. C9362 Sh.652
Front Plate Layout, F1327 Sh.1
Rack "A" Circuit Diagram, D2499 Sh.141
Detail Ref. of Case, D2419-Sh.8
B.M. & Gen. Dwg. of Cab. Comp. 231066-C9388-Sh.11A
Panel Wiring & Cables, F1327 Sh.2

BM.226024

THIS I.M. INCLUDES ALL RELAYS NECESSARY TO MAKE CHANGES PER REV. #1 OF THIS DWG. RELAYS ARE TO BE MOUNTED TO SUPPORT STRIPS & SUPPORT STRIPS ARE TO BE ASSEM. TO SUPPORTS. ALL RELAYS TO BE WIRED AS SHOWN.

C9362

SH. 648

GOVT. ON 649

ASSEMBLY F1327 Sh.1	BEGUN BY F.J. Kahoe	DATE 3-7-42	APPROVED	DATE
DETAILS C9232	FINISHED BY J.J. Marshall	3-7-42	C.R. Beall	3/23/42
REQ. OF 49 G.O. 183120	TRACED BY	3-10-42		
SCALE	CHECKED BY James J. Marshall	3-10-42		