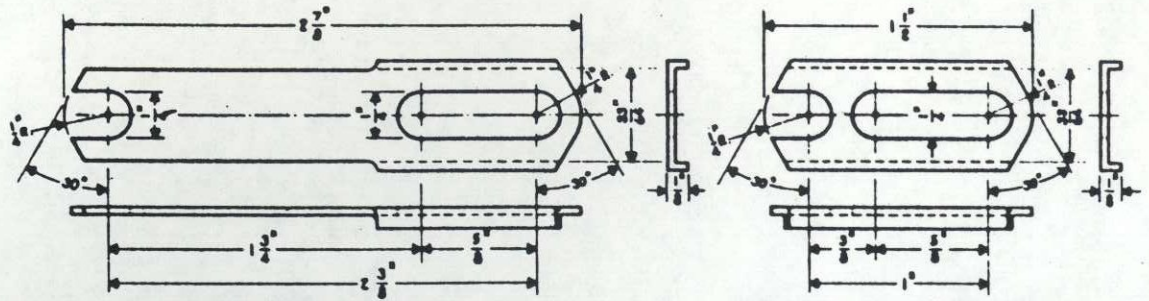


**40104 WASHER.** A.A.R. 10708 02-618070  
**40106 BINDING NUT.** A.A.R. 10706 02-318780  
**40107 CLAMP NUT.** A.A.R. 10707 02-318903

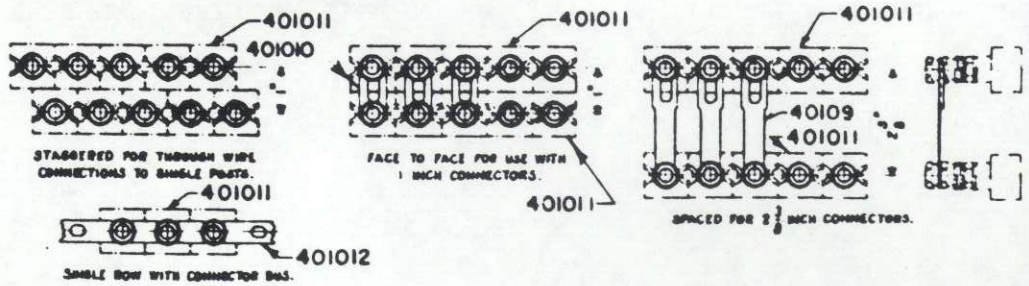
**401012 CONNECTOR BUS.** FOR 36 TERMINALS  
 HALF-HARD COPPER NO. 18 A.W.G. (NICKEL OR CHROMIUM PLATED)  
 SIMILAR TO A.A.R. 10766  
 02-987282

**401013 CONNECTOR BUS.** FOR 36 TERMINALS  
 HALF-HARD COPPER NO. 18 A.W.G. (NICKEL OR CHROMIUM PLATED)  
 SIMILAR TO A.A.R. 10766

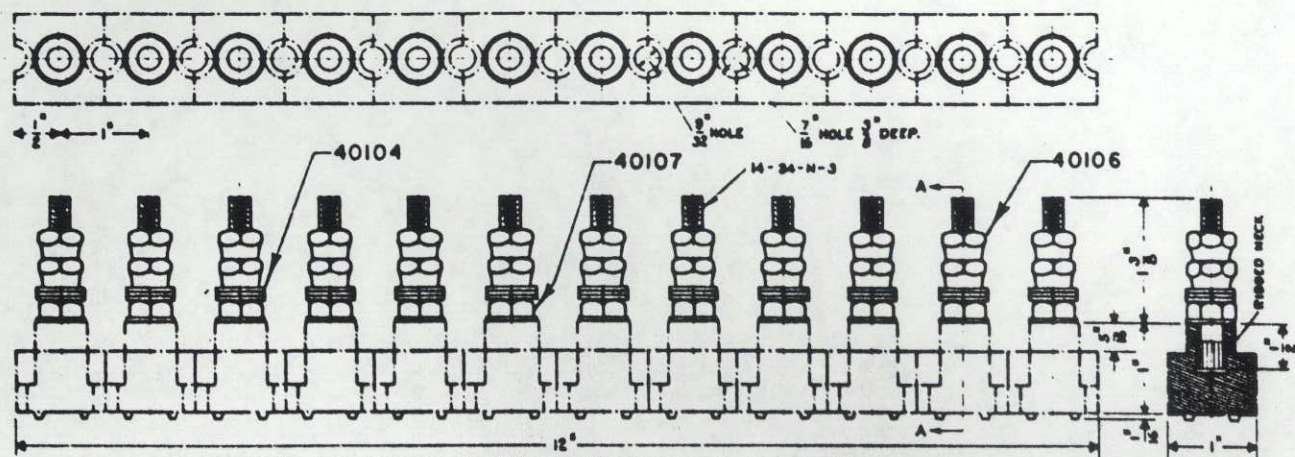


**40109 CONNECTOR.**  
 HALF-HARD COPPER NO. 18 A.W.G. (NICKEL OR CHROMIUM PLATED)  
 A.A.R. 10762  
 02-148753

**401010 CONNECTOR.**  
 HALF-HARD COPPER NO. 18 A.W.G. (NICKEL OR CHROMIUM PLATED)  
 A.A.R. 10761  
 02-150009




NOTE:  
 1. MATERIAL FOR TERMINAL BLOCKS, WASHERS, NUTS AND BINDING POSTS SHALL BE IN ACCORDANCE WITH A.A.R. 546 SPECIFICATIONS NO. 183-64, PART 155.



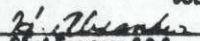
**401011 MULTIPLE UNIT TERMINAL BLOCK. COMPLETE**  
 A.A.R. 10544  
 02-048757

SHEET 1

**CONRAIL**  **CS-4010**

STANDARD  
**TERMINAL BLOCKS**  
 MULTIPLE UNIT

JUL. 6, 1963

Approved   
 Chief Engineer C & S

59