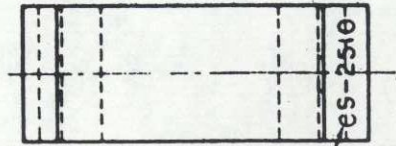


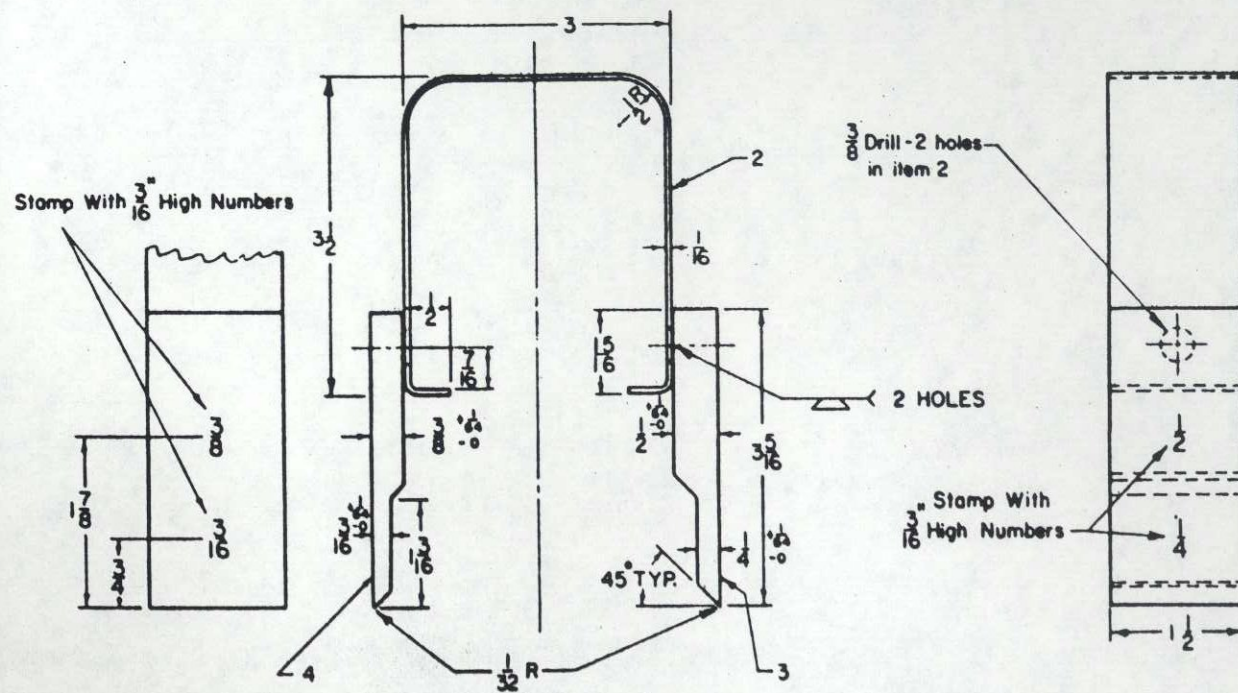
NO	ITEM	REQ	REF ACCT NO
1	TEST GAGE ASSEMBLY		45-300017
2	HANDLE, 10-1/2 x 1-1/2 x 1/16	1	
3	GAGE, 3-5/16 x 1-1/2 x 1/2	1	
4	GAGE, 3-5/16 x 1-1/2 x 3/8	1	




Stamp With  $\frac{3}{16}$ " High Letters & Numbers

NOTES:

- Items 2, 3 & 4 to be of C.R. 1020 steel.
- Items 3 & 4 to be cyanide hardened 0.010" to 0.015" deep.
- Complete assembly to be chrome plated.




SHEET 1

CONRAIL  CS-2510

STANDARD  
SWITCH OBSTRUCTION  
TEST GAGE

JAN. 28, 1982

Approved   
Chief Engineer, C&D