

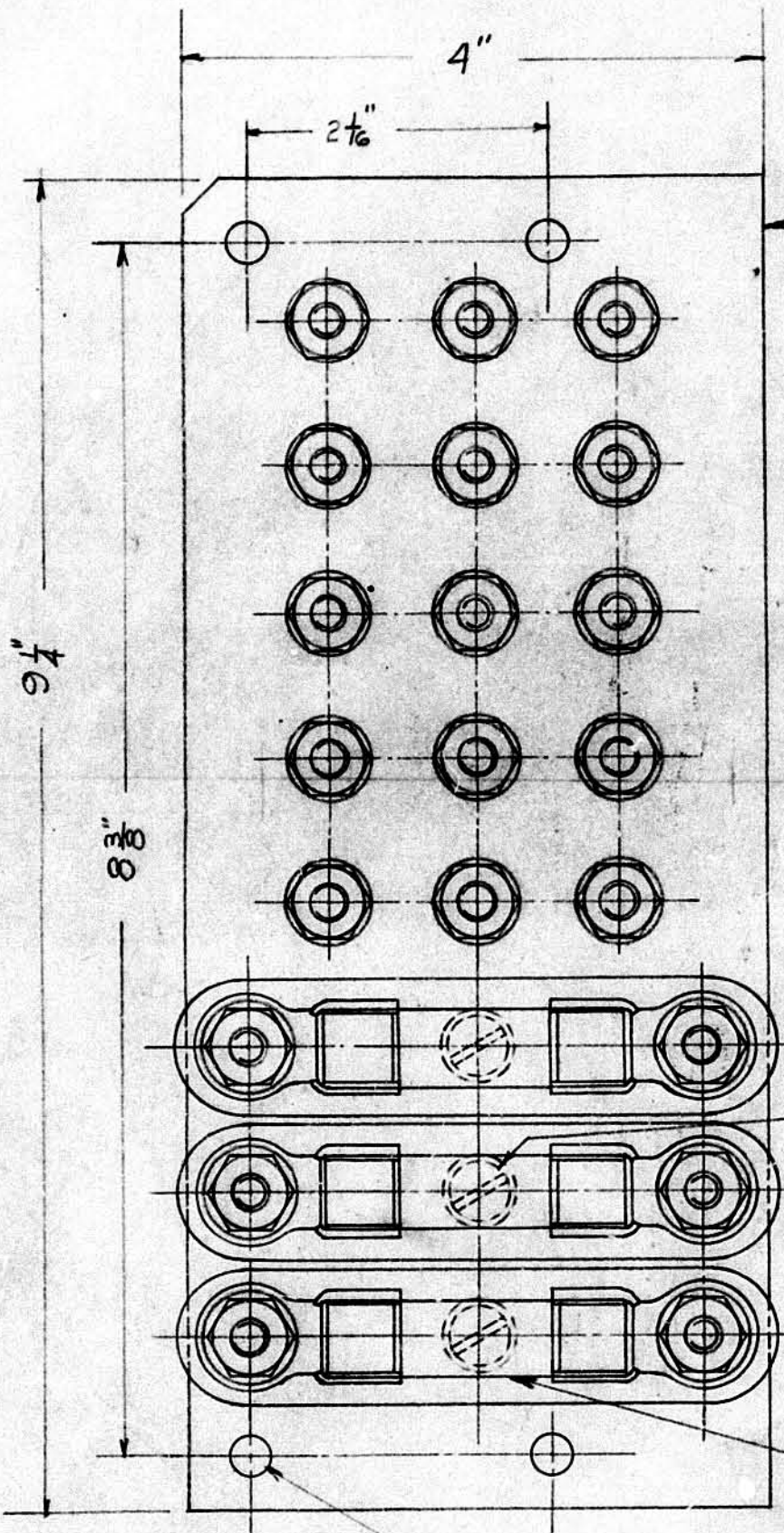
BOARD COMP. 45825-5
 TERMINAL BOARD COMPLETE (2 Pages Page 1)
 USED ON DWARF SIGNAL COMP. 53800
 FOR CLEVELAND UNION TERMINAL
 GENERAL RAILWAY SIGNAL CO. ROCHESTER, N.Y.

R-42853 7-18-28

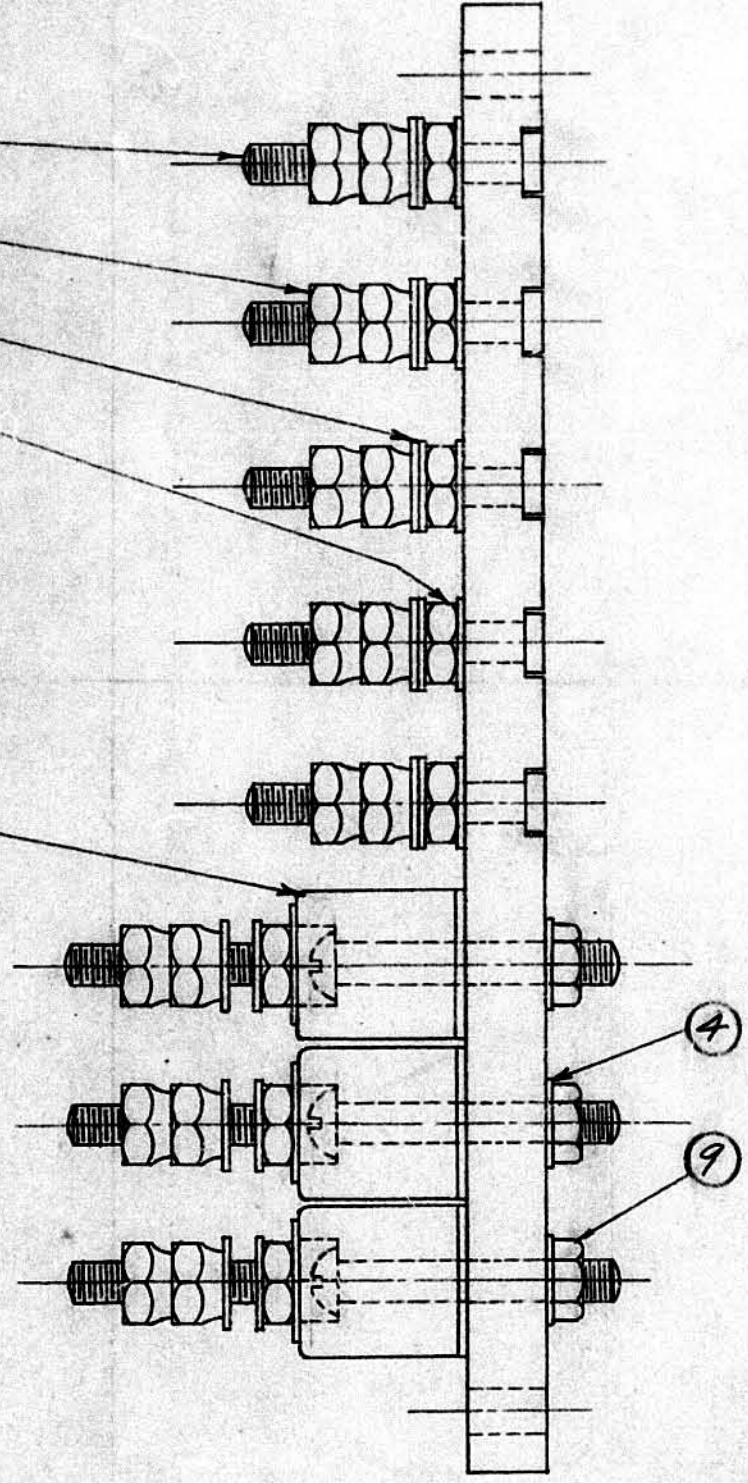
1-24-29

VOID

VOID
 4-29-58
 RAY 835
 Tim 4/29



- ①
- ②
- ③
- ④
- ⑤
- ⑥
- ⑦
- ⑧



DR. BY: Leadbetter
 CHK. BY: E.H. 1-24
 DESIGN O.K. [Signature]
 DRAFTING O.K. [Signature] 1-30
 APPROVED: [Signature]

BOARD COMP. 45825-5

TERMINAL BOARD COMP.
USED ON DWARF SIGNAL COMP. 53800
FOR CLEVELAND UNION TERMINAL

(2 Pages Page 2)

VOID

GENERAL RAILWAY SIGNAL CO. ROCHESTER, N. Y.

GR. I	DRAW. NO	REF.	NAME	REVISIONS AND DATE OF DRAWING		APPROVALS	
				R-42853	7-18-28	O.K.	DATE
1	39964-189	1	Board, Terminal				
15	350-5	2	Screw #14-24 x 1 3/4 Sq. Hd. W.N.		1-24-29		
30	42843-1	3	Nut, #14-24 W.N.				
48	1225-2	4	Washer, 1 7/8 I.D. x 1 9/16 O.D. x .040 Th. W.N.				
15	42839-8	5	Nut, #14-24 W.N. 1/8 th.				
3	46048-12 Gr. 1	6	Fuse Block Comp				
3	1411-10	7	Screw #14-24 x 1 3/4 Lg. Rd. Hd. W.N.				
3	0839-3	8	Fuse, Type B 250V N.E.C. Std. 5 Amp.				
3	42839-5	9	Nut #14-24 Hex. 3/16 Th. W.N.				

VOID
4-29-58
R-45835
Tms 4/29

This Document Contains
PROPRIETARY INFORMATION
Which Is The Sole Property Of
GENERAL RAILWAY SIGNAL COMPANY
A UNIT OF GENERAL SIGNAL CORPORATION
ROCHESTER NEW YORK 14602
And Is
NOT TO BE DISCLOSED TO OTHERS

DR. By Leadbetter TR. By J.
CHECKED By E.H. 1-24
O.K. FOR PROD.
DESIGN O.K. [Signature] 1/30
DRAFTING O.K. [Signature]
APPROVED [Signature] 2/4/29